

Electronic Supporting Information for Proton Location in Acid...Pyridine Hydrogen Bonds of Multi-Component Crystals.

Colin C. Seaton

*Division of Chemistry and Forensic Sciences, School of Life Sciences, University of Bradford,
Richmond Road, Bradford, UK, BD7 1DP.*

*Synthesis and Solid State Pharmaceutical Centre, Materials and Surface Science Institute, University
of Limerick, Ireland.*

Crystal Structures

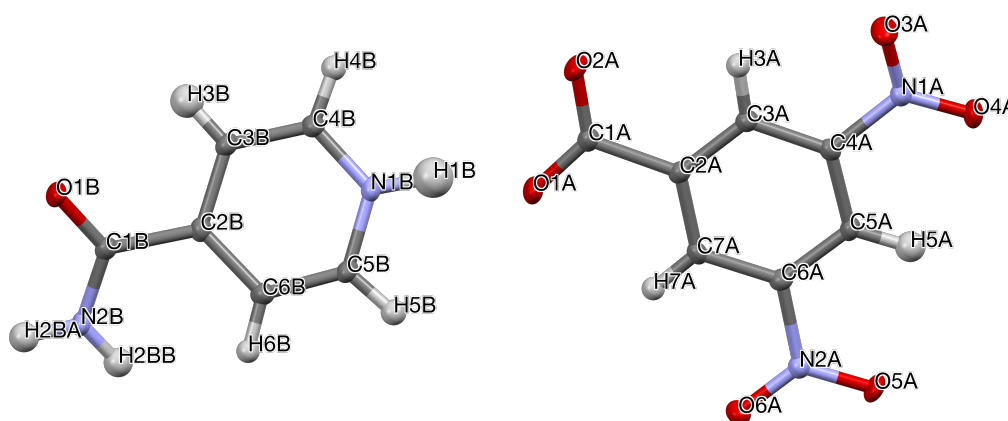


Figure S1. Asymmetric Cell of **1.a** as an ORTEP-style image (atom labels show for each molecule).

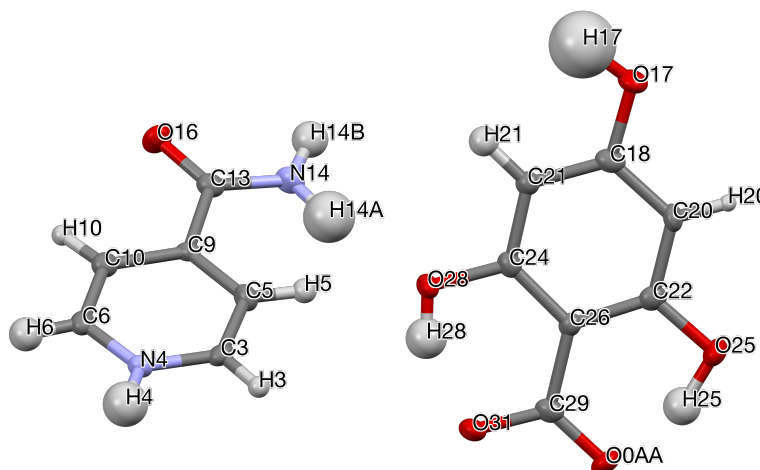


Figure S2. Asymmetric Cell of **3.a** as an ORTEP-style image (atom labels show for each molecule).

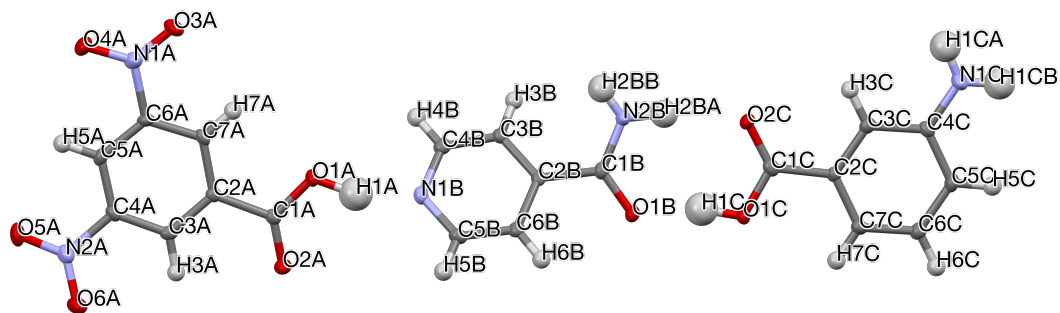


Figure S3. Asymmetric Cell of **1.a.2** as an ORTEP-style image (atom labels show for each molecule).

Correlation Plots

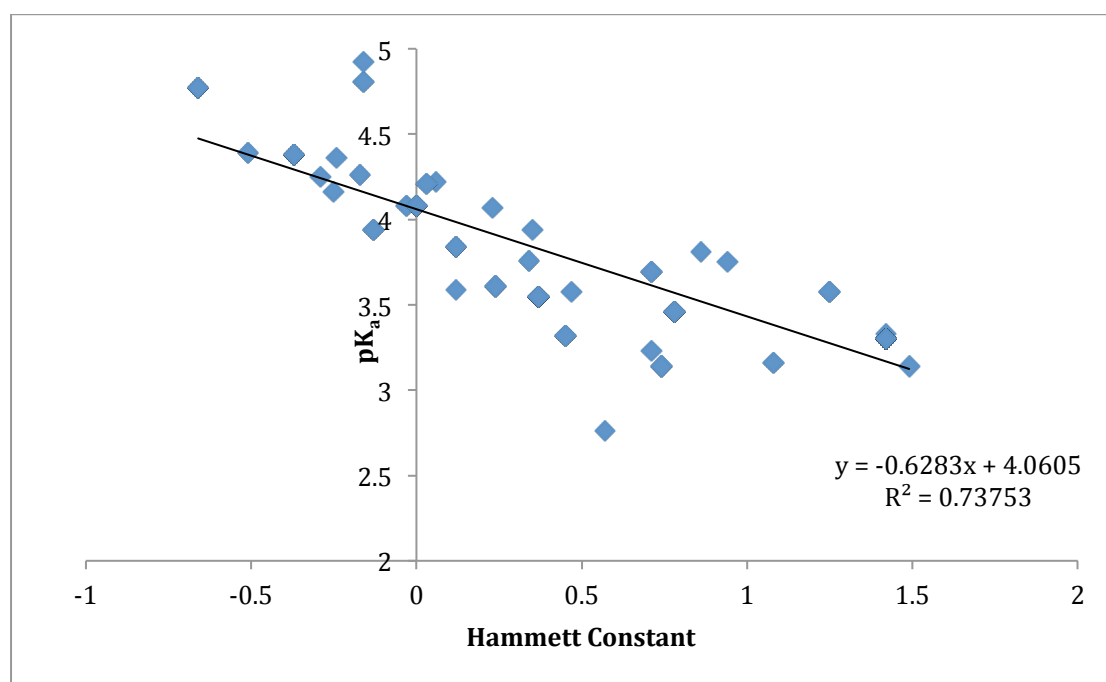


Figure S4. Plot of pK_a values of the analysed benzoic acids against their Hammett Constants. Least squares fitted linear correlation is plotted as a solid line.

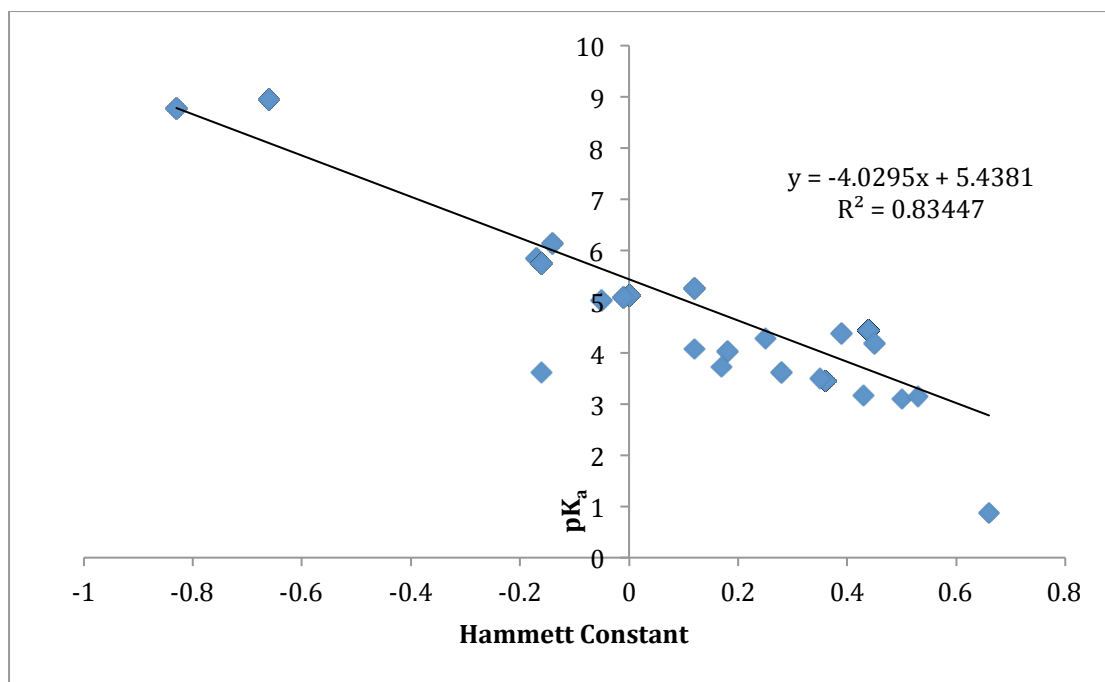


Figure S5. Plot of pK_a values of the analysed pyridines against their Hammett Constants. Least squares fitted linear correlation is plotted as a solid line.