

Supporting Information

Controlled Heterogenous Nucleation Process for TiO₂ Crystal Growth

*Shuang Yang, Yu Hou, Bo Zhang, Xiao Hua Yang, Hui Jun Zhao and Hua Gui Yang**

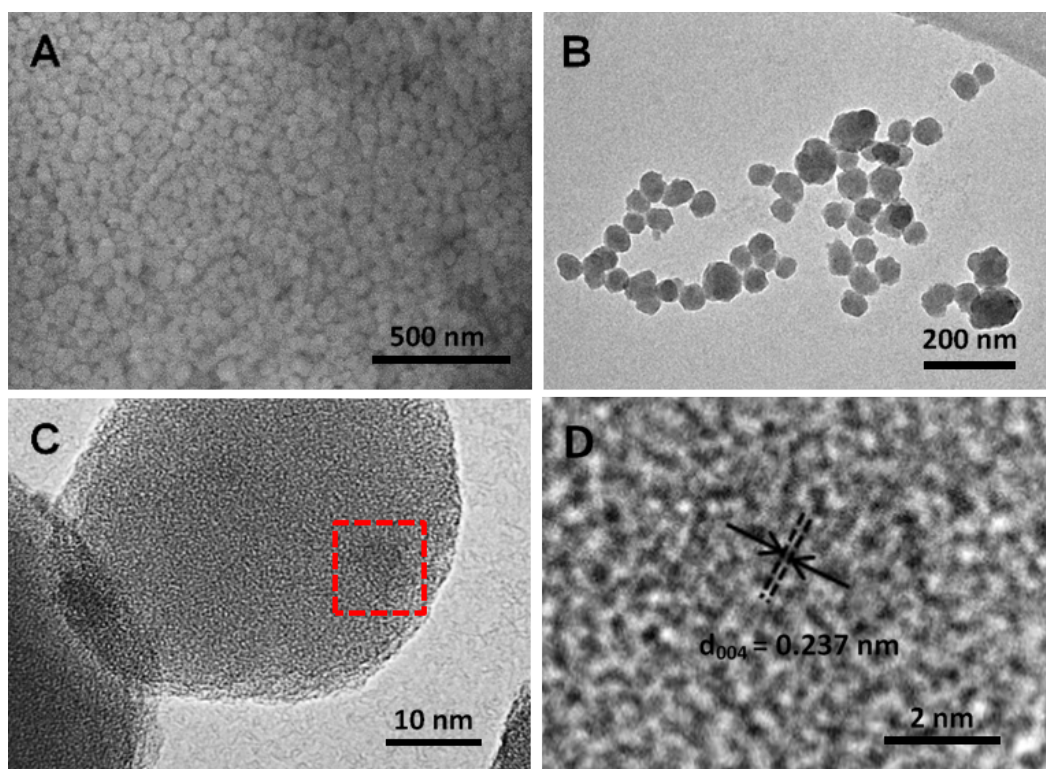


Figure S1. (A, B) SEM and TEM characterization of sintered silica spheres. (C) Typical TEM image of silica spheres with TiO₂ seeds. (D) HR-TEM image of TiO₂ seeds in the selected area.

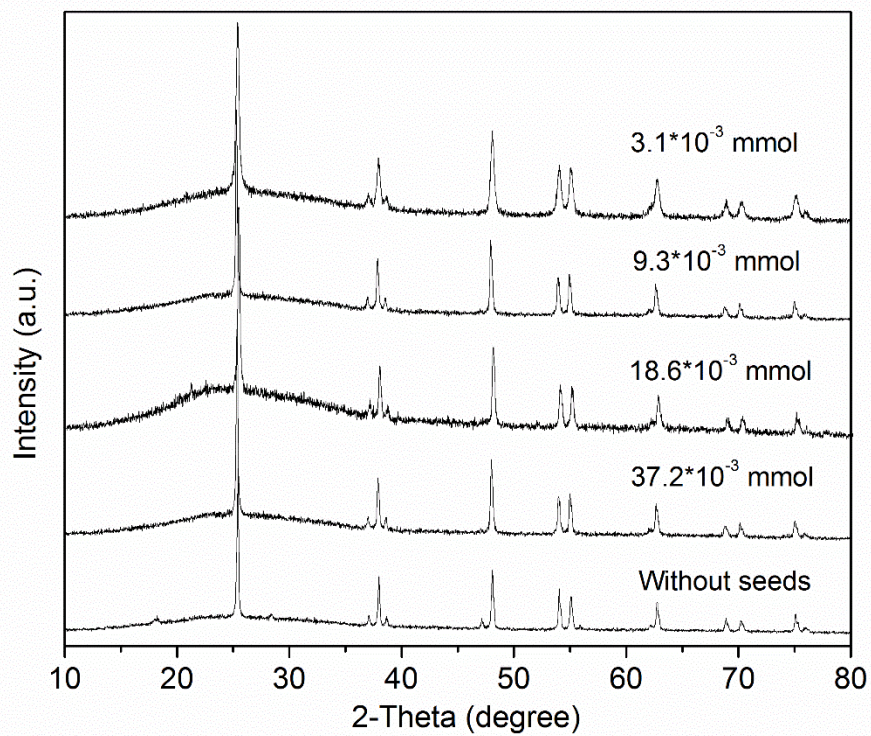


Figure S2. XRD pattern of the as-prepared anatase TiO₂ nanosheets with different titanium seed contents.

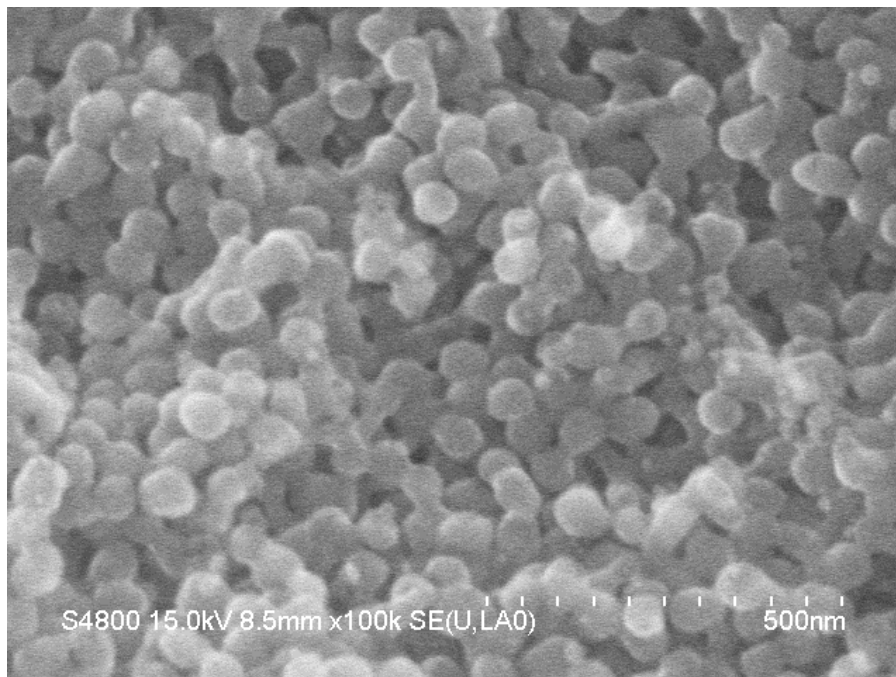


Figure S3. SEM image of silica spheres after hydrothermal reaction without ultrasonic treatment (reaction conditions SiO_2 spheres 600 mg, 20mM TiF_4 0.1 mL 47%HF).

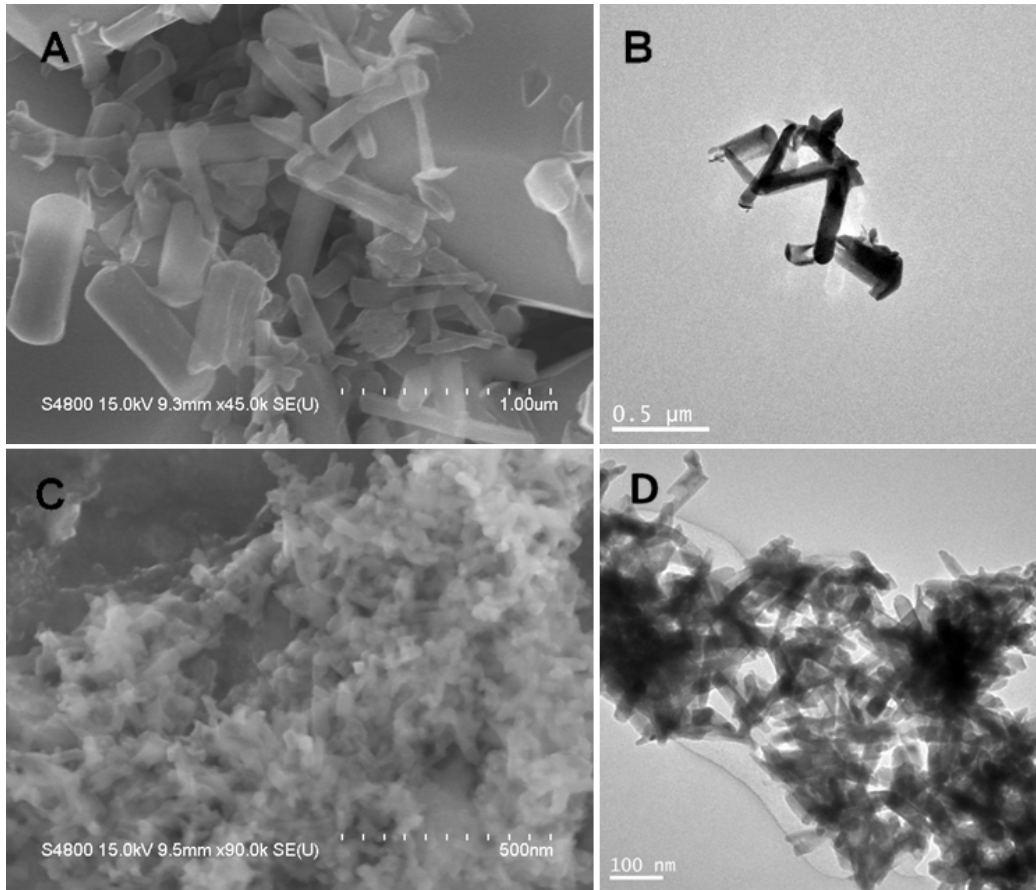


Figure 4. SEM and TEM characterization of Fe₂O₃ crystals synthesized without (A, B) and with seeds (C, D).