

Supplementary Information

PbSe hierarchical nanostructures: solvothermal synthesis, growth mechanism and their thermoelectric transportation properties

Xiaorui Shi, Gang Chen,* Dahong Chen, Rencheng Jin and Haiming Xu

Department of Chemistry, Harbin Institute of Technology, Harbin, 150001, People's Republic of China.

Email: gchen@hit.edu.cn

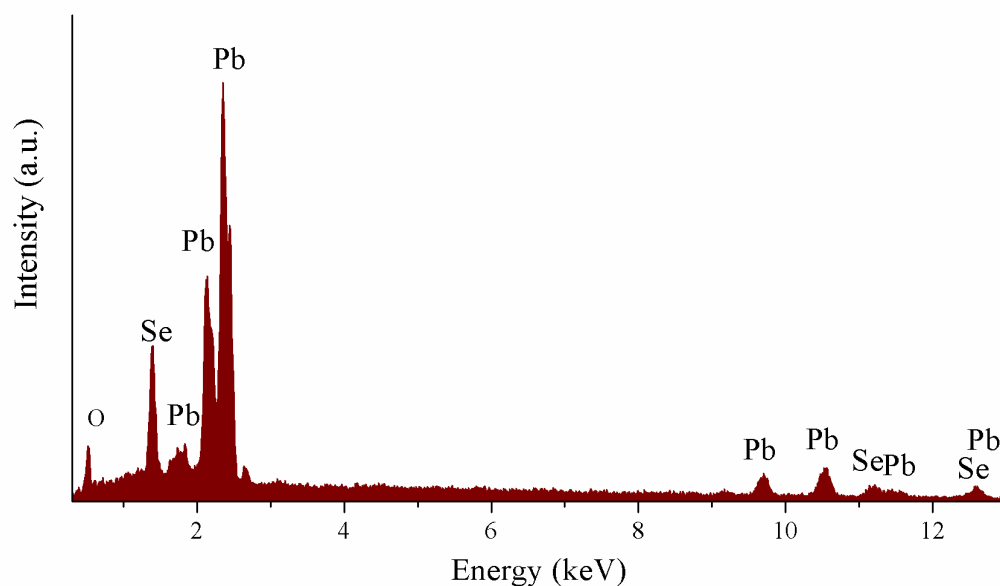


Fig. S1 The corresponding EDS spectrum showing the presence of all the expected elements in the products

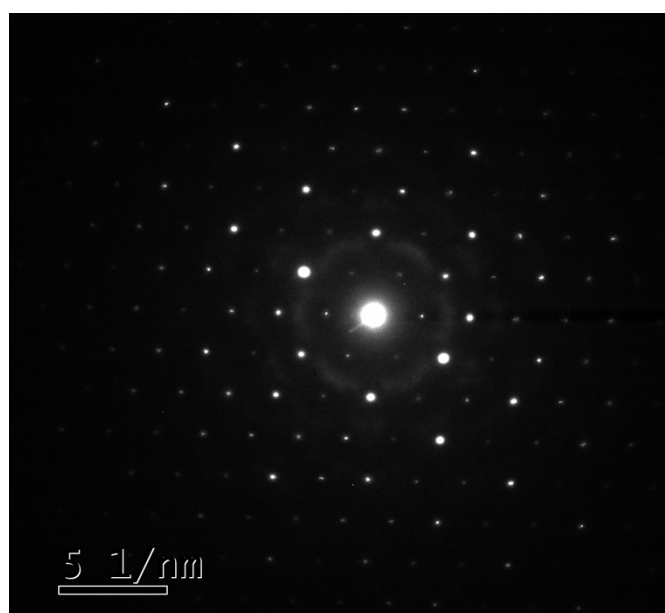


Fig. S2 SAED pattern taken from a single sheet

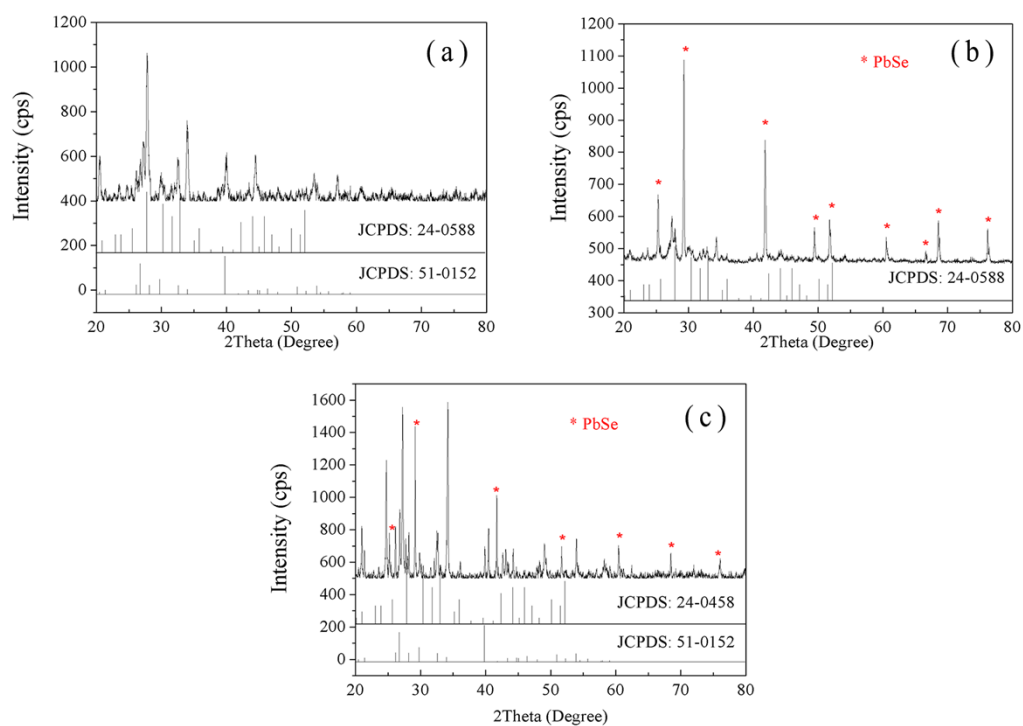


Fig. S3 XRD patterns of the products synthesized at different temperatures for a reaction time of 9 h (a) 160 °C, (b) 180 °C and (c) 200 °C