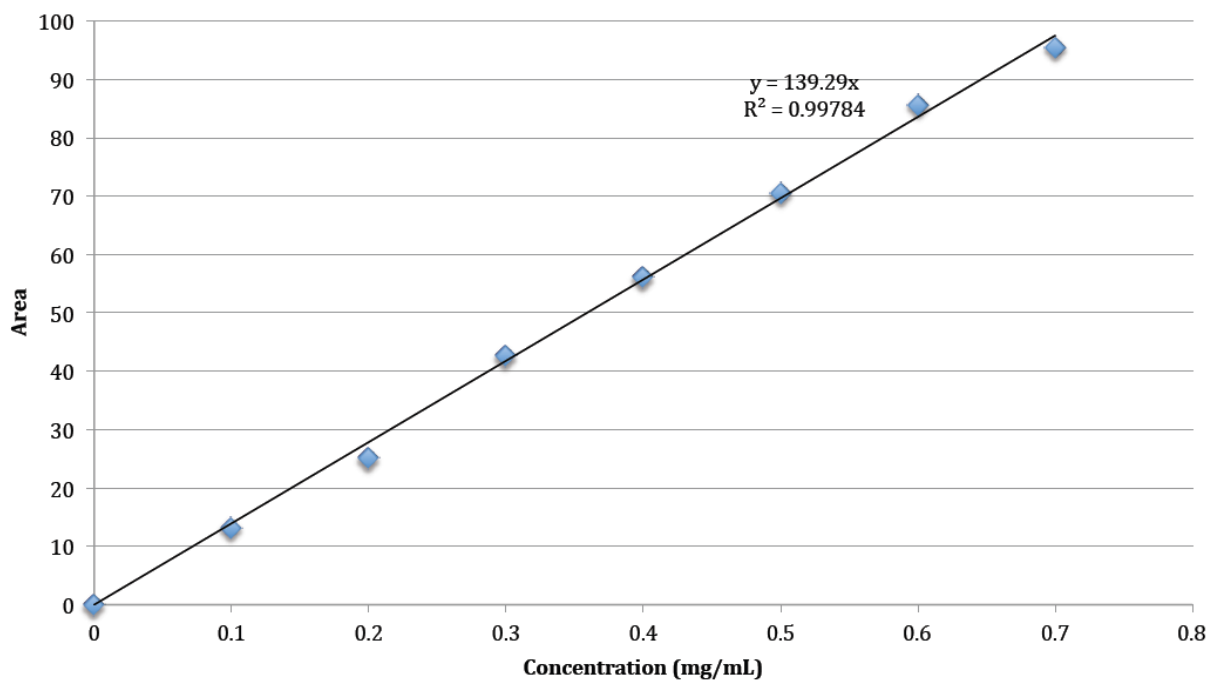


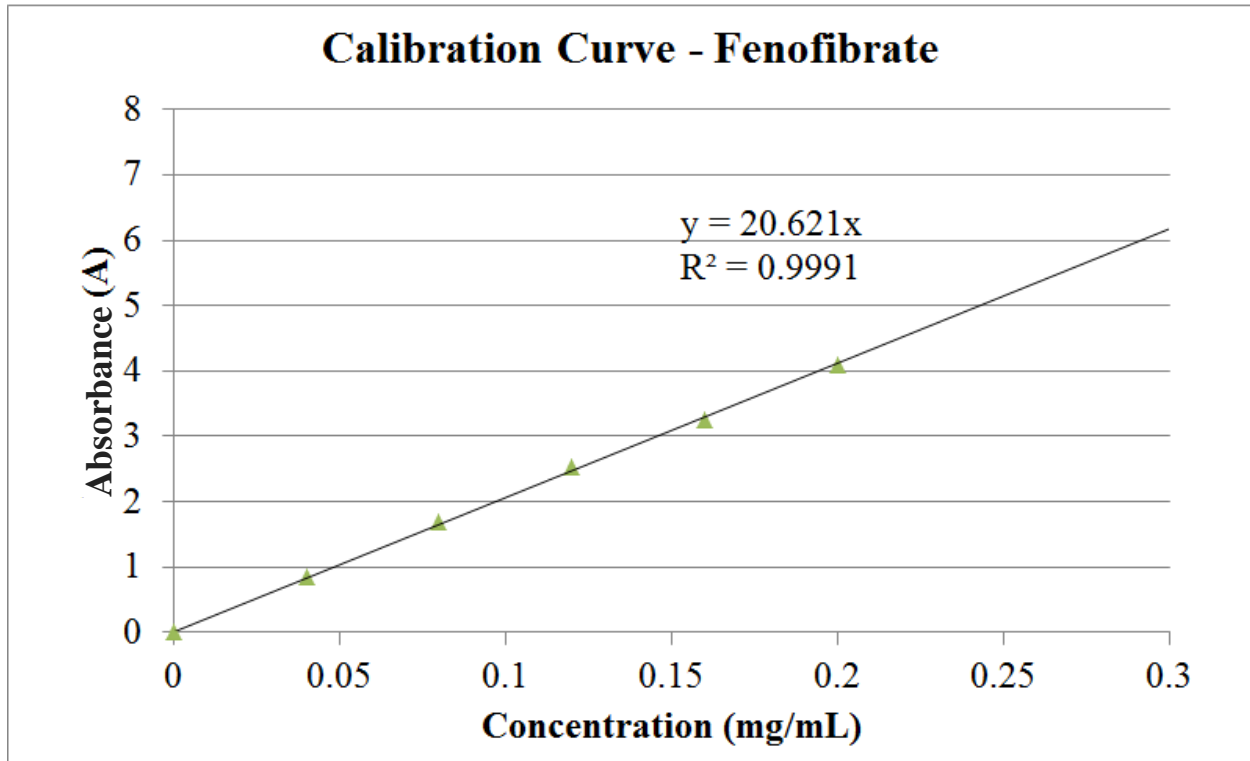
Supporting information:

Ibuprofen calibration curve using HPLC

### Calibration Curve - Ibuprofen

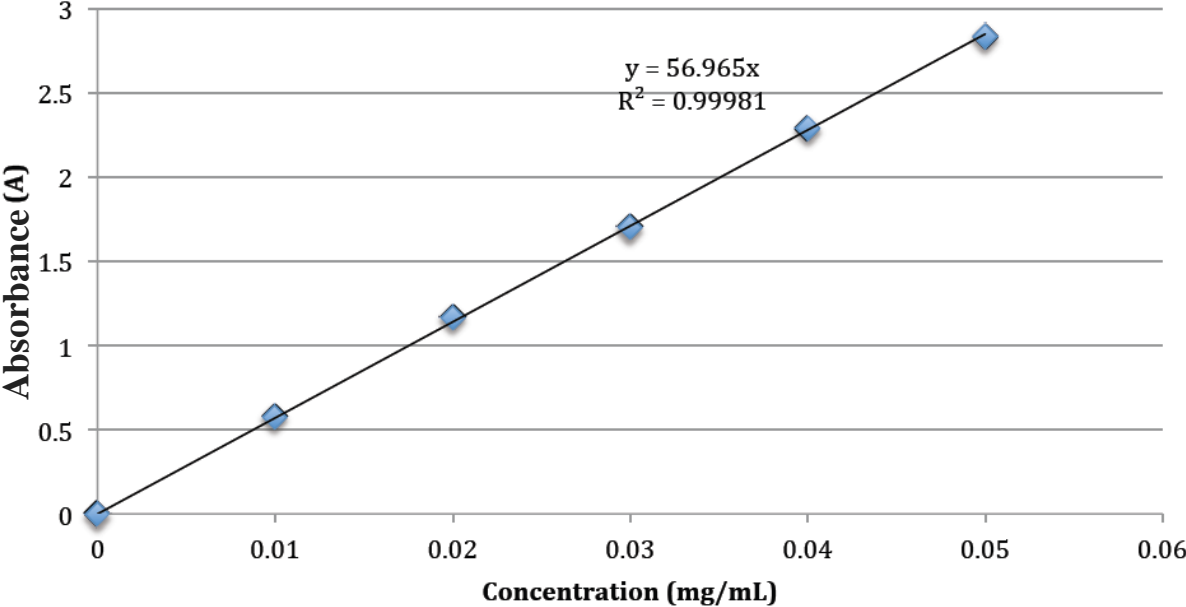


Fenofibrate calibration curve using UV-Vis



Griseofulvin calibration curve using UV-Vis

### Calibration Curve - Griseofulvin



Indomethacin calibration curve using UV-Vis

## Calibration Curve - Indomethacin

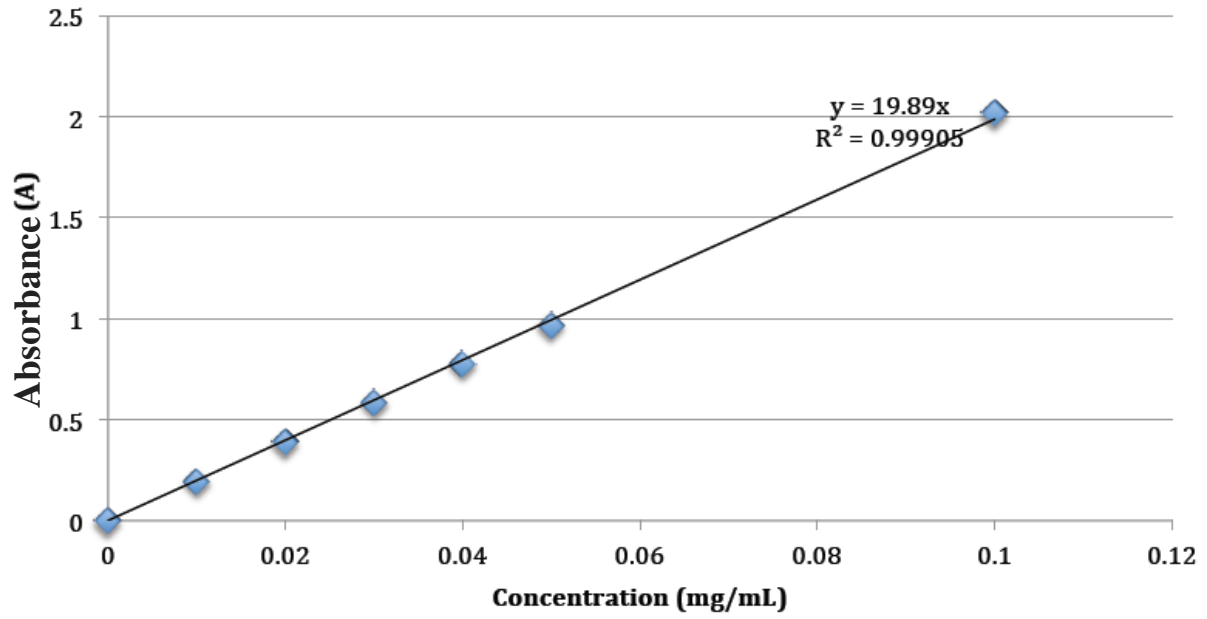
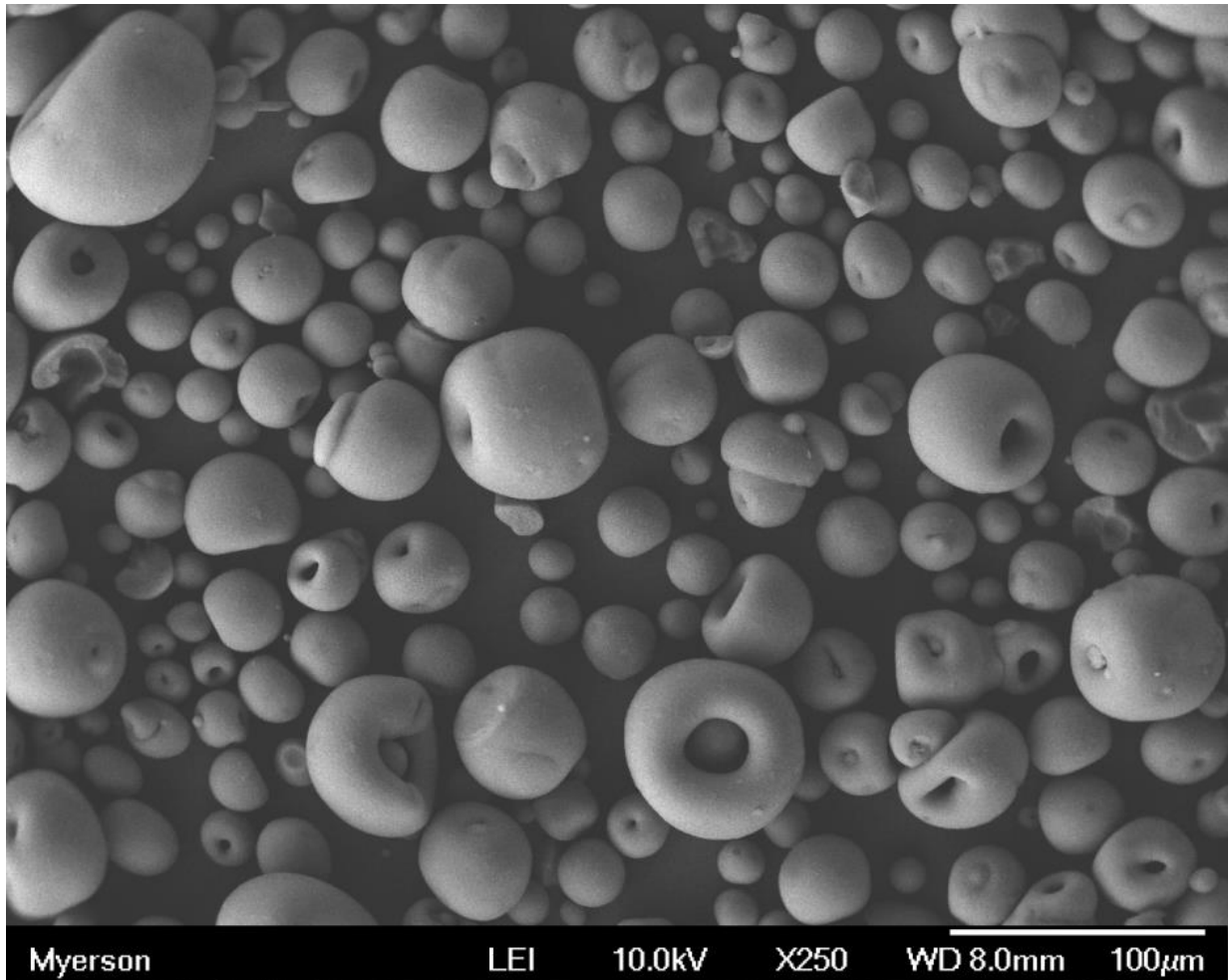


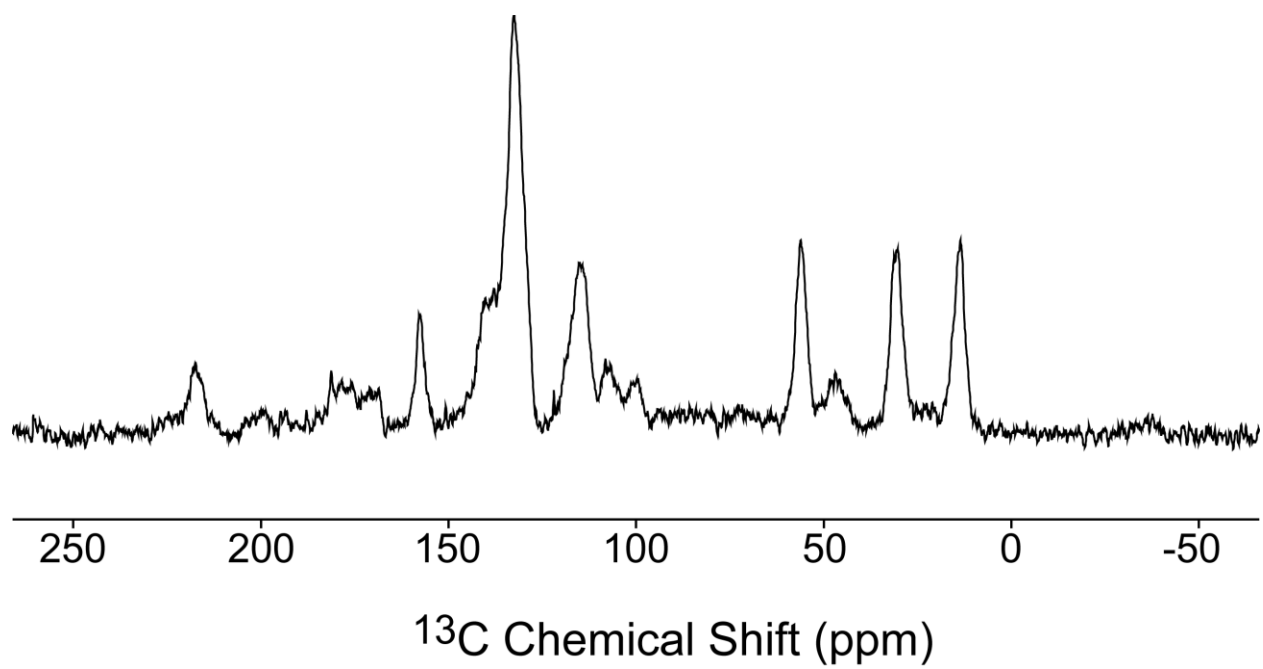
Table 1. <sup>13</sup>C chemical shifts of silica-griseofulvin polymorphs

Surface Polymorph ( $\delta$ , ppm)	Pore Polymorph ( $\delta$ , ppm)	Assignment
197.08	198.34	4
192.86	194.75	8
172.81	172.81	6
171.40	170.72	12
167.04	168.73	14
160.34	161.65	10
106.46	108.79	9
105.15	106.99	5
94.03	95.29	13
	92.86	7,11
61.99	58.79	10-OMe
60.97	58.30	6-OMe
57.67		12-OMe
41.95	43.01	3
40.00	40.00	2
15.59	17.77	1

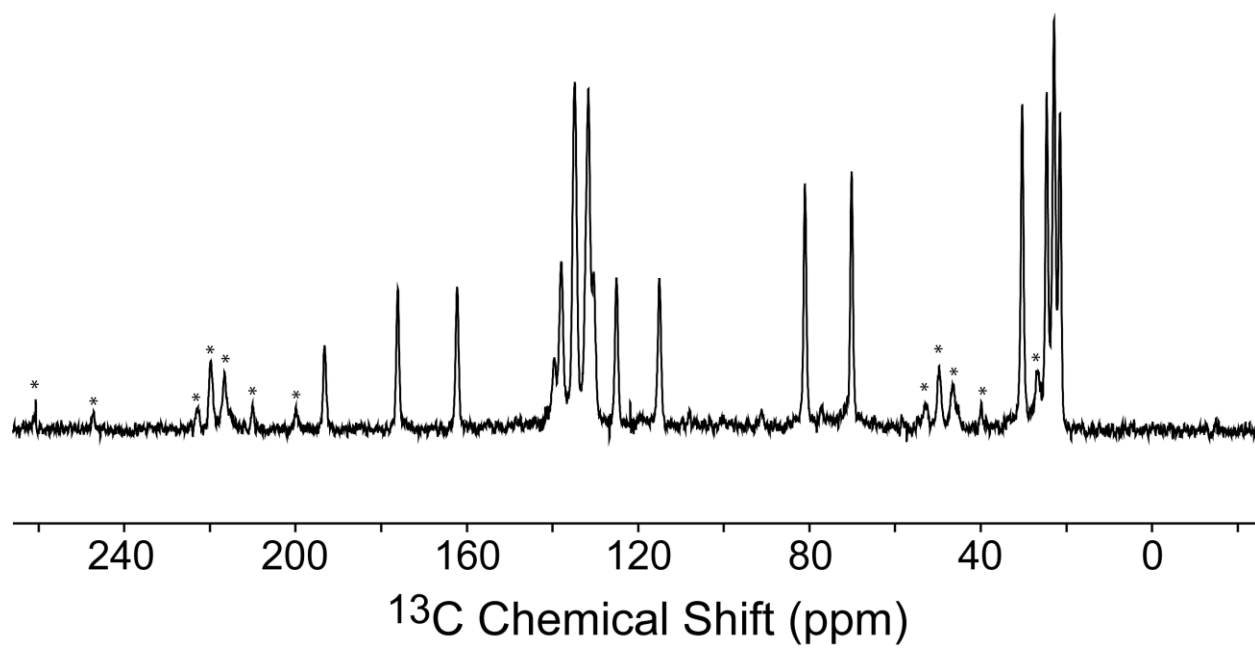
SEM image of crystallization of ibuprofen inside silica particles: no obvious surface bulk crystals were observed.



ssNMR result for indomethacin in silica particles:



ssNMR result for fenofibrate in silica particles:



The peaks marked with a "\*" are spinning sidebands.