

Electronic Supplementary Information

Hollow structured and flower-like C@MnCo₂O₄ composite for high electrochemical performance in supercapacitor

Lei Li,^a Fei He,^a Shili Gai,^a Shenghuan Zhang,^a Peng Gao,^{*a} Milin Zhang,^a Yujin
Chen,^{*b} and Piaoping Yang^{*a}

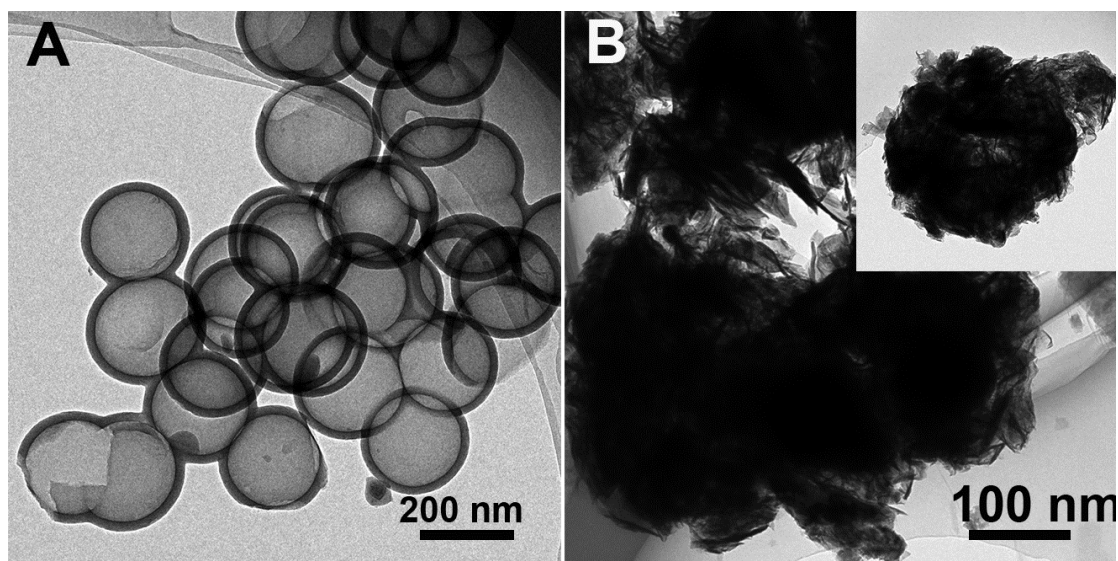


Fig. S1 TEM images of pure carbon shell and pure MnCo₂O₄ nanosheets.

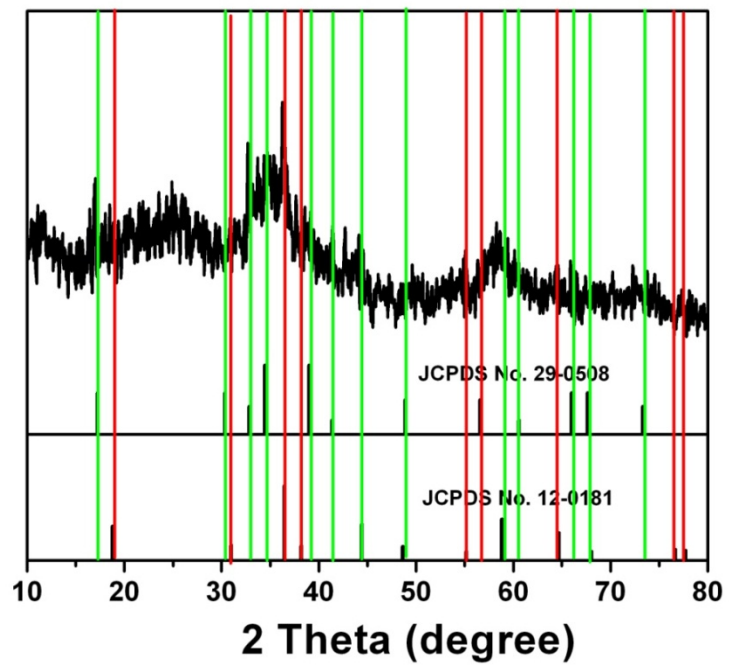


Fig. S2 XRD pattern of C@metal silicate.

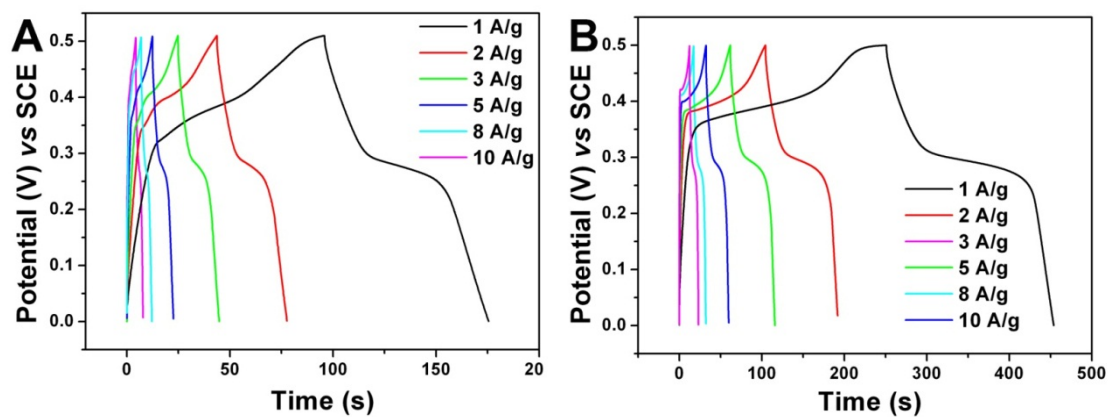


Fig. S3 Charge-discharge plots of pure carbon shell and pure MnCo_2O_4 .