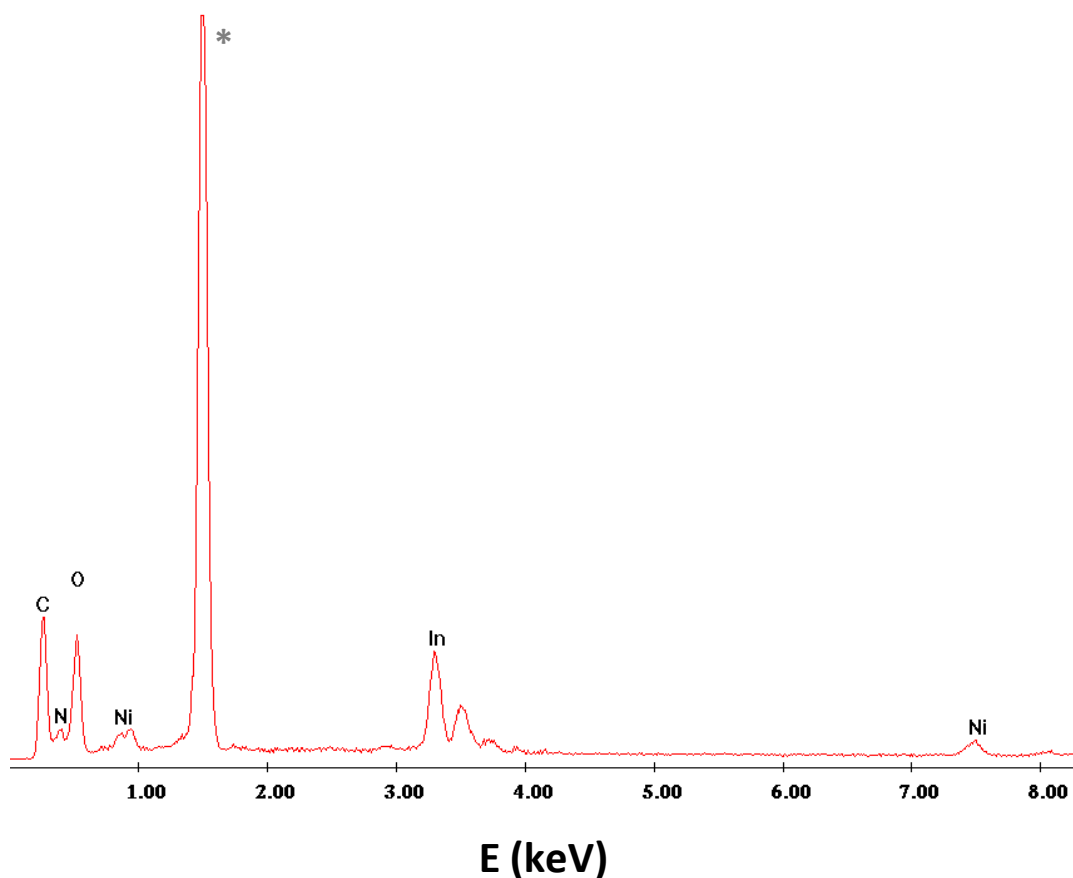


## SUPPORTING INFORMATION

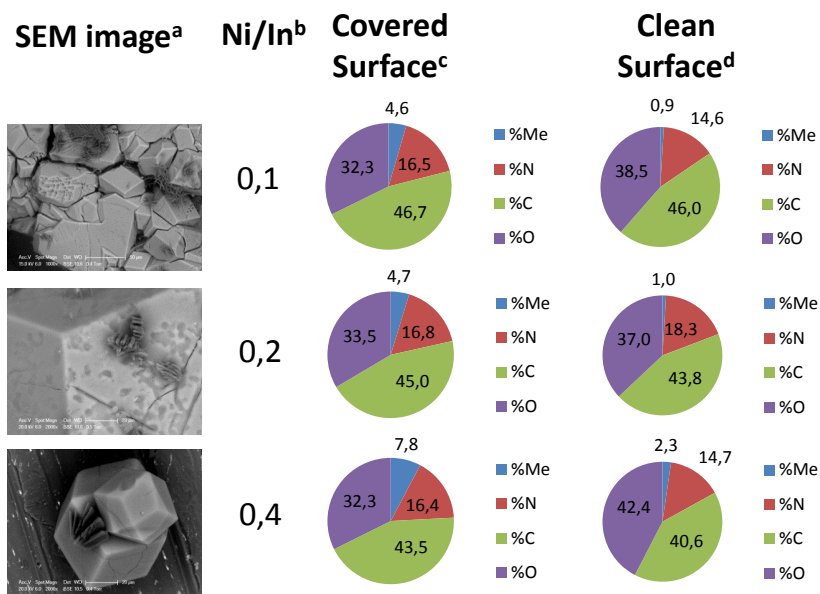
### Transition metal inclusion in RhoZMOF material

Guillermo Calleja<sup>a\*</sup>, Carmen Martos<sup>a</sup>, Gisela Orcajo<sup>a</sup>, José A. Villajos<sup>a</sup> and Juan A. Botas<sup>a</sup>

<sup>a</sup> Department of Chemical and Energy Technology, ESCET, Universidad Rey Juan Carlos, C/ Tulipán s/n, 28933 Móstoles, Madrid, Spain. Fax: 0034 914887068; Tel: 0034 914887006; E-mail: guillermo.calleja@urjc.es.



**Fig. S1** SEM-EDS diagram for one crystal of Ni-exchanged RhoZMOF crystal. C, N, O, In and Ni can be determined in the sample. \* corresponds to Au used to cover the crystals by sputtering methods in order to increase the conductivity of the surfaces and hence the resolution of images.



**Fig. S2** SEM-EDS results for clean and covered surfaces in some Ni-exchanged RhoZMOF crystals. SEM image taken by BSE detector (a); Ni to In molar ratio calculated in the clean-surface (b); normalized composition of the covered (c) and clean (d) surface of the crystal, (in molar %), normalized by In content which remains constant in the crystals.