

Supporting Information

Bio-Inspired Nacre-like Layered Hybrid Structure of Calcium Carbonate under the Control of Carboxyl Graphene

Jie Li,^{ab} Dandan Liu,^b Bo Li,^b Hao Wei,^{*ab} Jun Wang,^{ab} Shihui Han,^{ab} and Lianhe Liu,^{ab}

^a Key Laboratory of Superlight Material and Surface Technology of Ministry of Education,
College of Material Science and Chemical Engineering, Harbin Engineering University,
Harbin 150001, PR China.

^b Institute of Advanced Marine Materials, Harbin Engineering University, Harbin 150001, PR
China.

***Corresponding Author:** E-mail: weihao7512@126.com

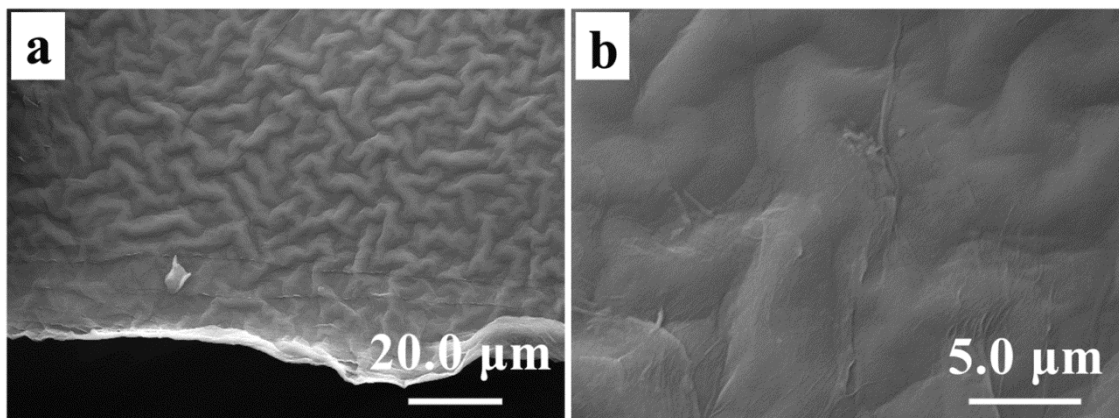


Fig. S1 SEM images of 0.5mg/mL GO-COOH aqueous solution after dried at 40 °C in a vacuum for 24 h, b) high magnification SEM images of a). It reveals a wrinkle structure.

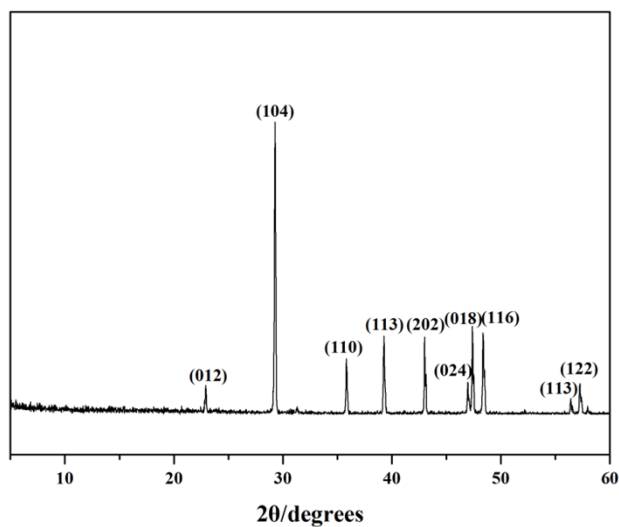


Fig. S2 Typical XRD diffraction patterns of pure CaCO₃ crystals in aqueous solution after 24 h of reaction.

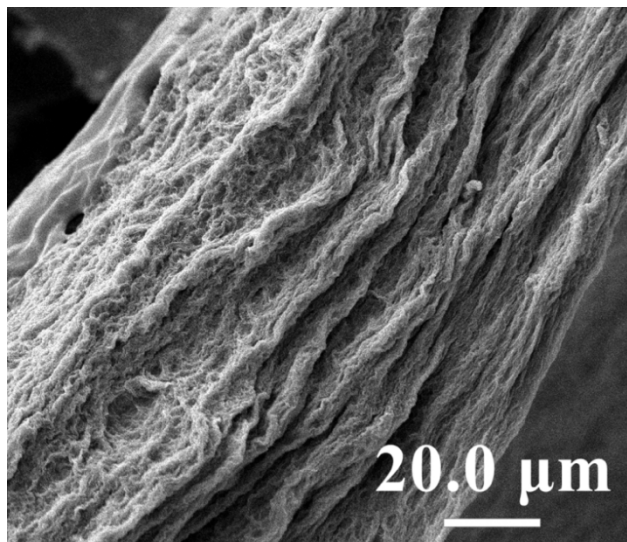


Fig. S3 SEM image of the cross section of GO-COOH/CaCl₂ hybrids. It reveals a loose layered structure.