

Supplementary information

DSC plots:

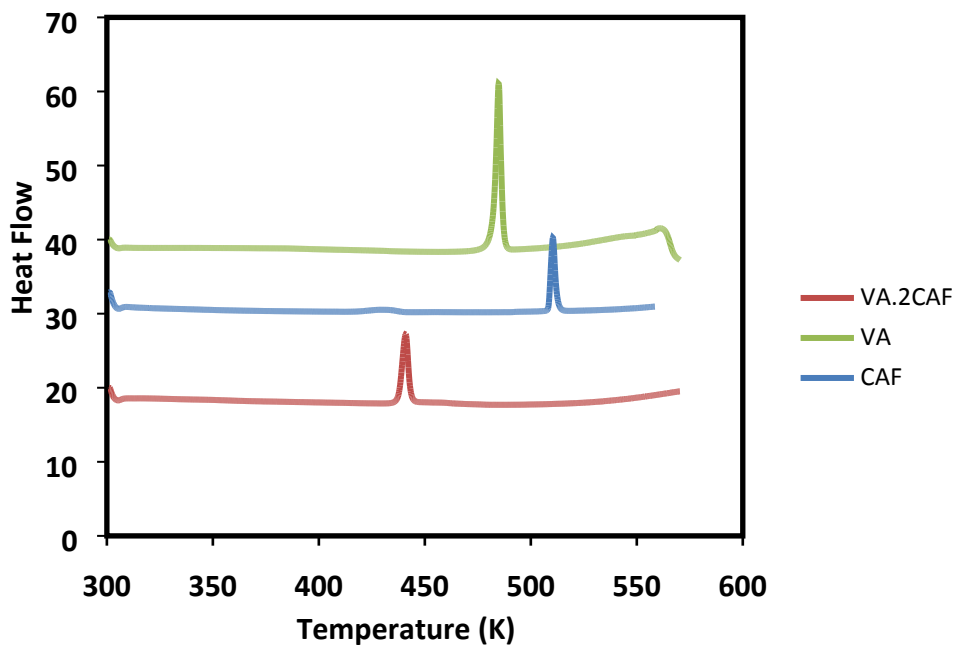


Figure 1 DSC plots for VA•2CAF (red), VA (green) and CAF (blue).

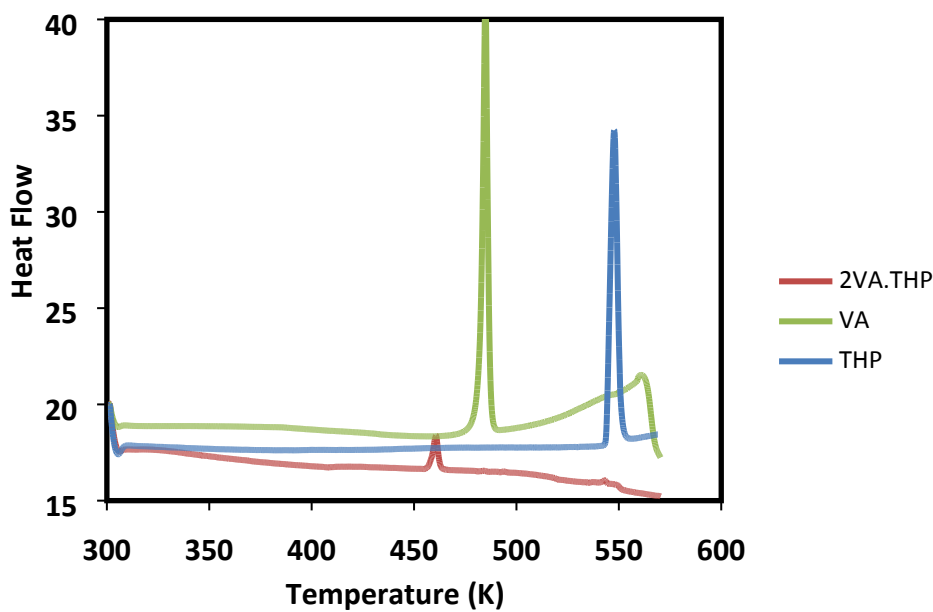


Figure 2 DSC plots for 2VA•THP (red), VA (green) and THP (blue).

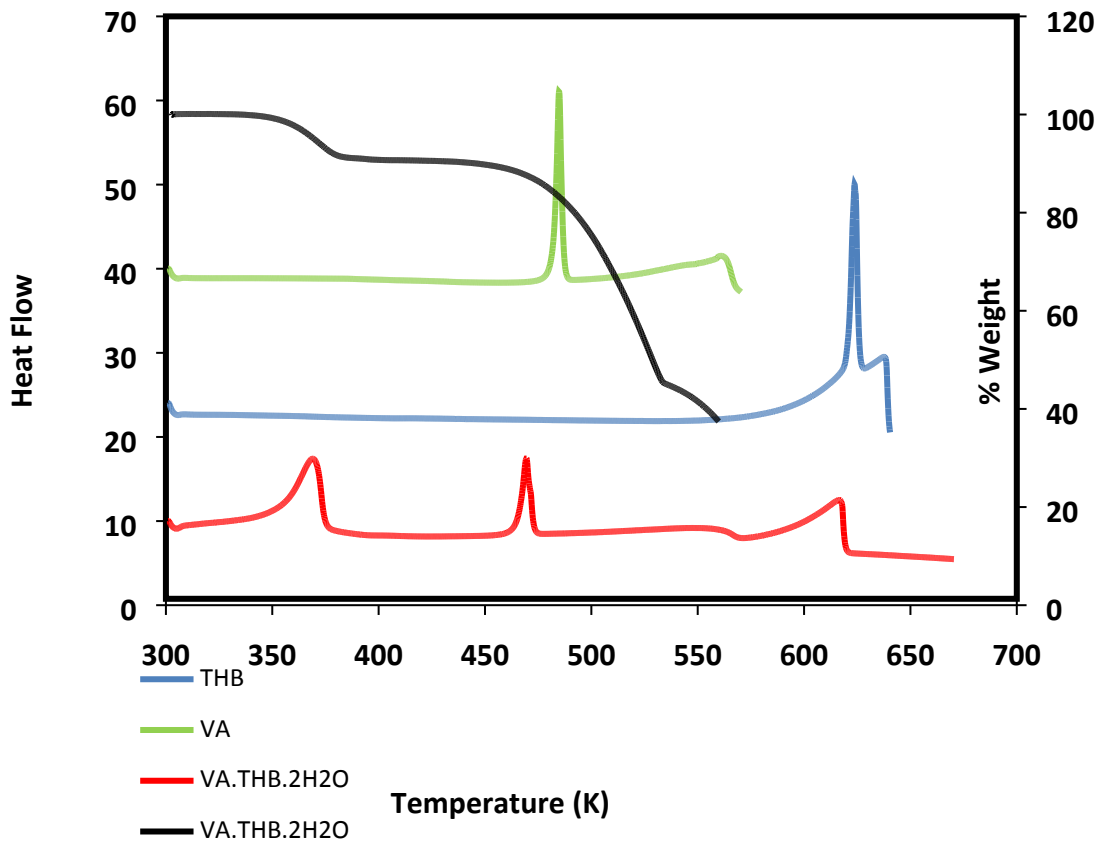


Figure 3 DSC plots for VA•THB•2H₂O (red), VA (green) and THB (blue). TG plot for VA•THB•2H₂O (black).

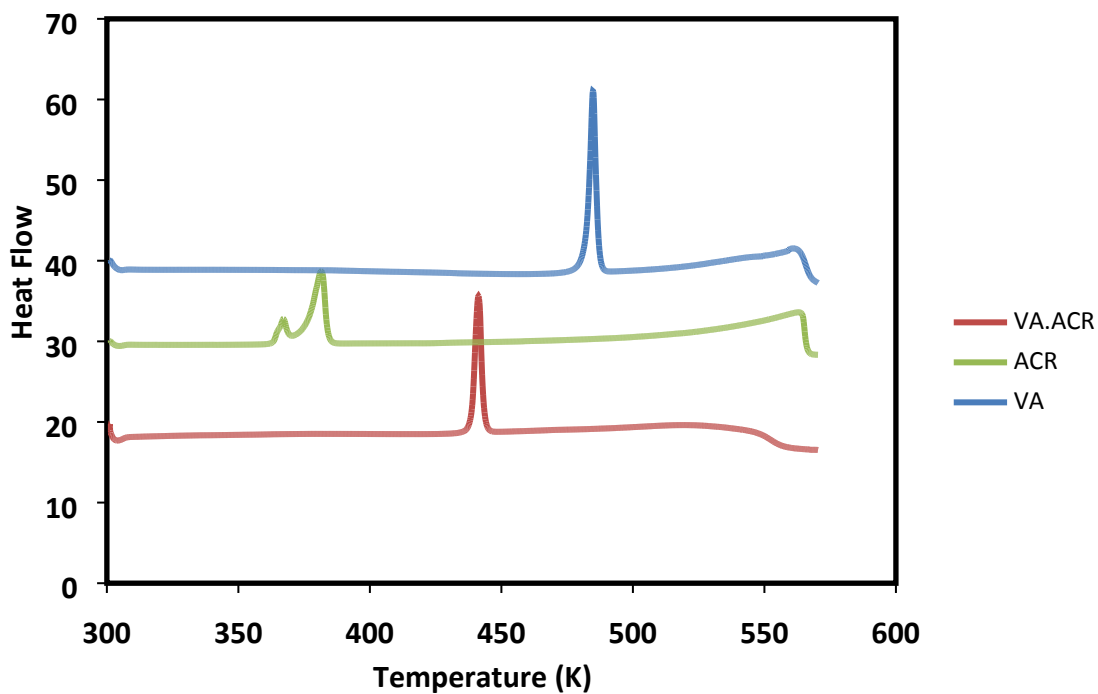


Figure 4 DSC plots for VA•ACR (red), VA (blue) and ACR (green).

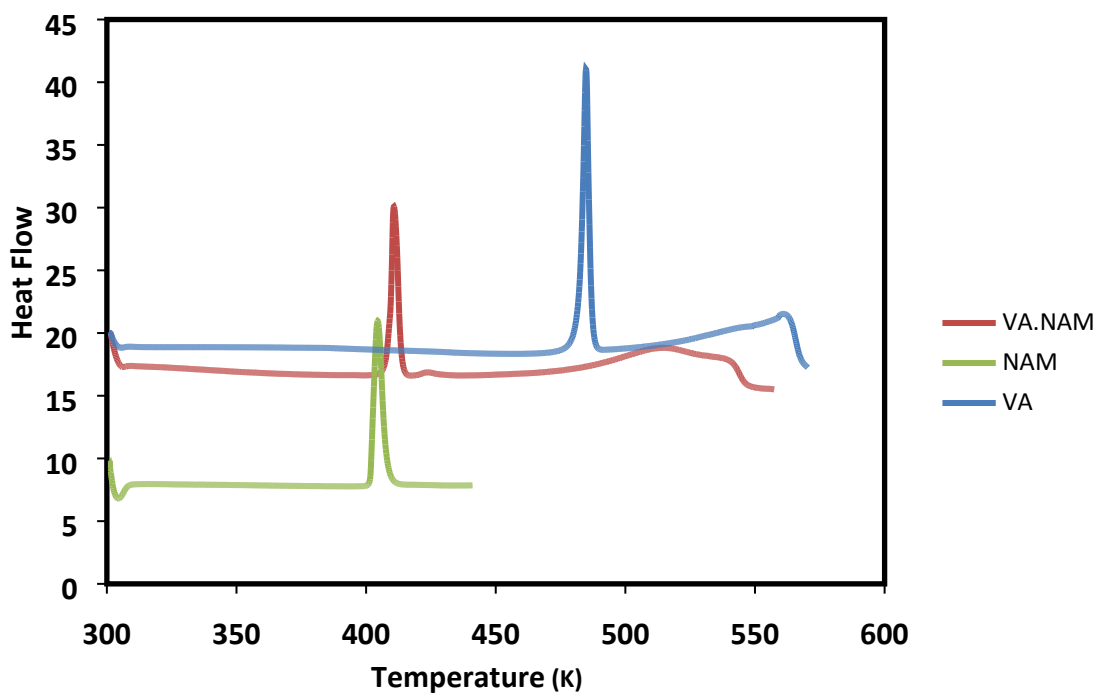


Figure 5 DSC plots for VA•NAM (red), VA (blue) and NAM (green).

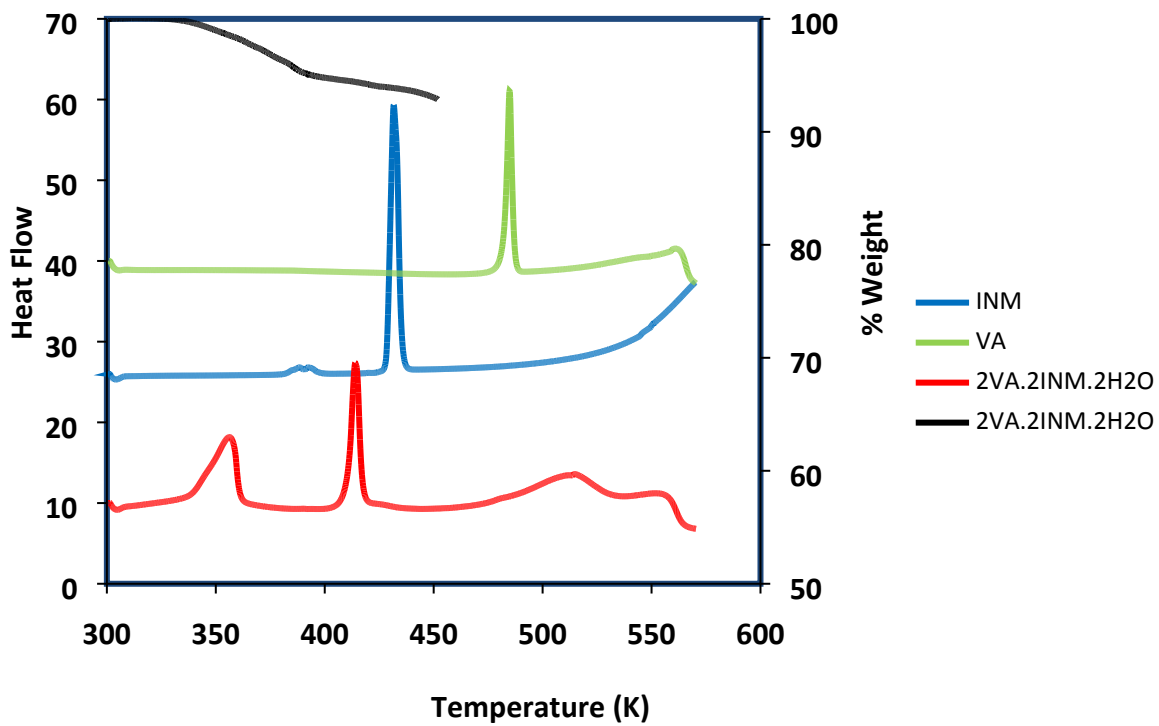


Figure 6 DSC plots for 2VA•2INM•2H₂O (red), VA (green) and INM (blue). TG plot of 2VA•2INM•2H₂O (black)

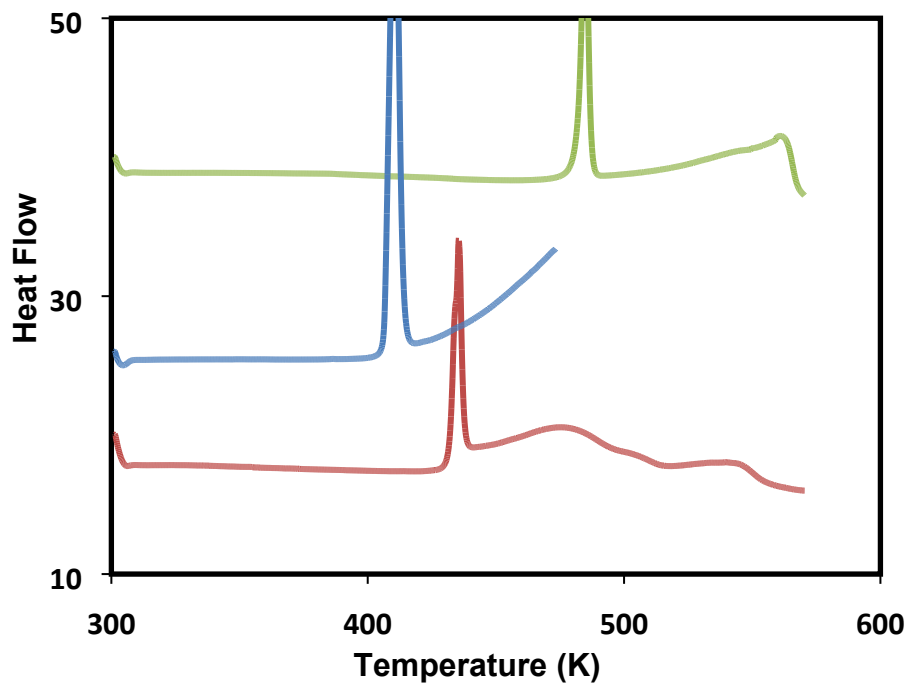


Figure 7 DSC plots for 2VA•2U (red), VA (green) and U (blue).

PXRD results of grinding, slurry and liquid assisted grinding experiments.

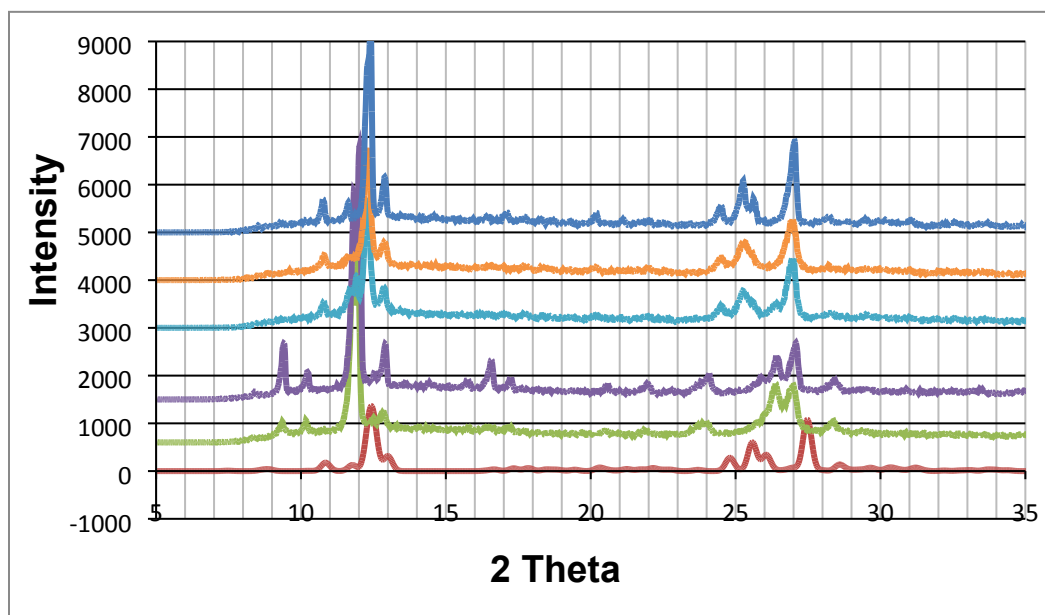


Figure 8 PXRD patterns of **VA•2CAF** calculated (red), ground product after 30 min (green), physical mixture (purple), ground product after 45 min (sky blue), ground product after 1 hr (orange) and slurry (blue).

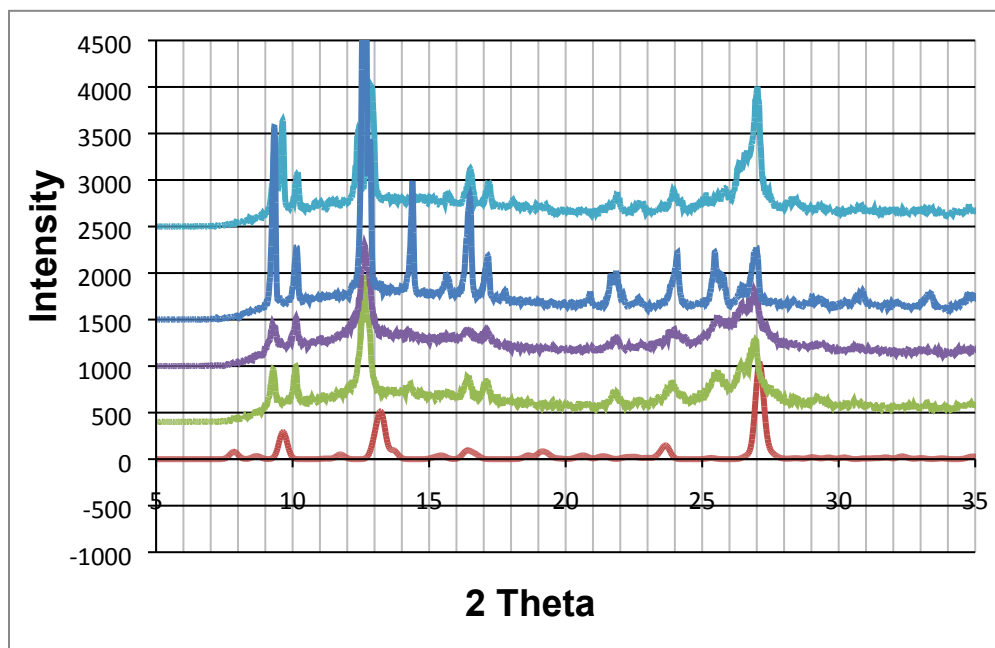


Figure 9 PXRD patterns of **2VA•THPH** calculated (red), ground product after 20 min (green), ground product after 30 min (purple), slurry (sky blue) and physical mixture (blue).

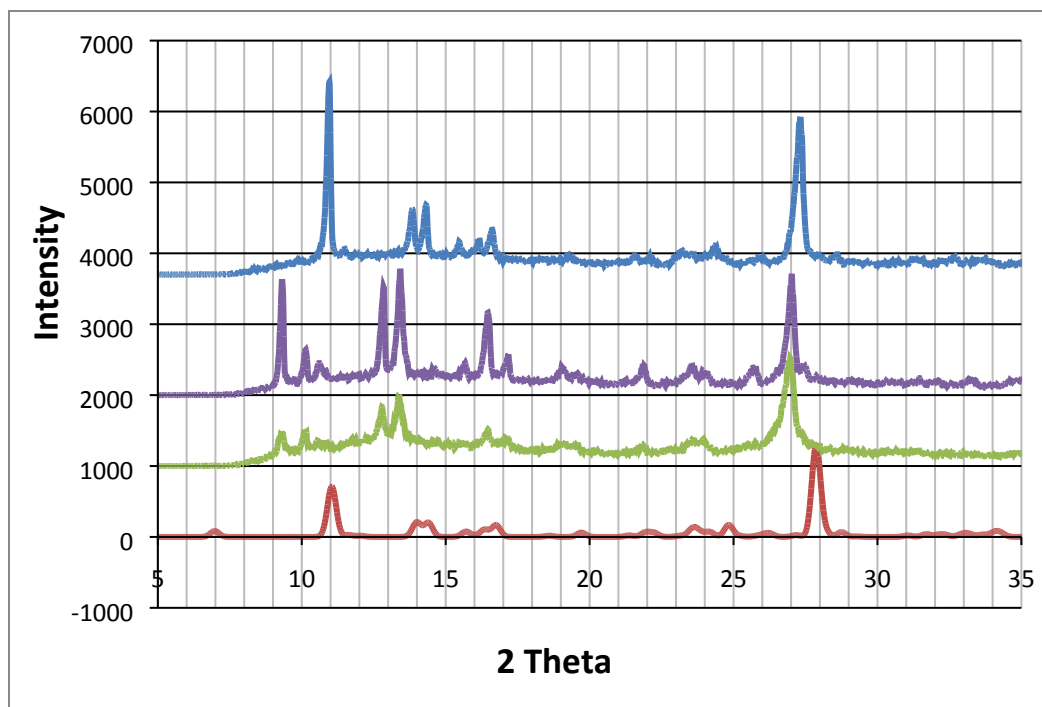


Figure 10 PXRD patterns of **VA•THBR•2H₂O** calculated (red), ground product (green), physical mixture (purple) and liquid assisted ground product (blue)-Note the peak at 2θ=7° is small compared to peak at 2θ=11°

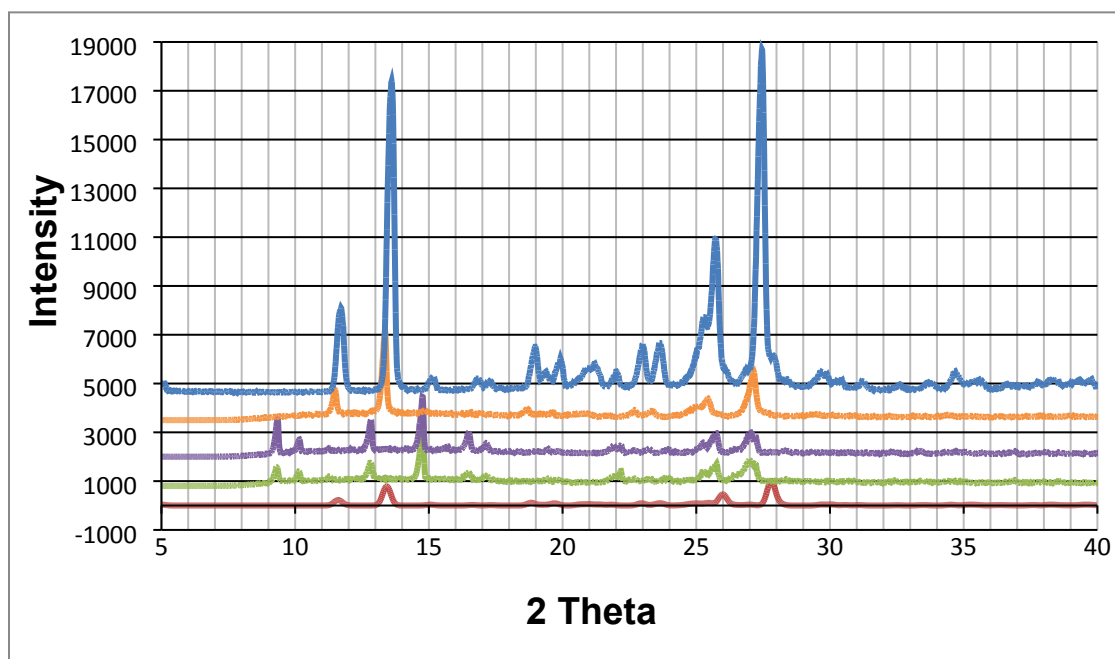


Figure 11 PXRD patterns of **VA•NAM** calculated (red), ground product (green), physical mixture (purple) and slurry (orange) and liquid assisted grinding (blue).

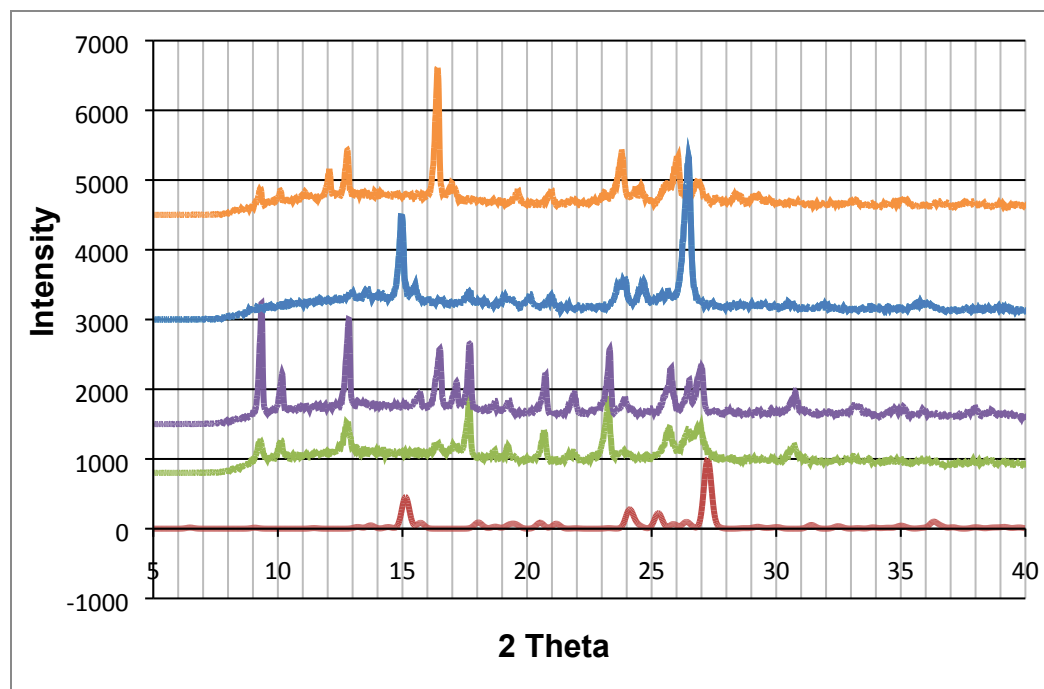


Figure 12 PXR D patterns of $2VA \cdot 2INM \cdot 2H_2O$ calculated (red), ground product (green), physical mixture (purple), slurry in methanol (orange) and liquid assisted ground product (blue).

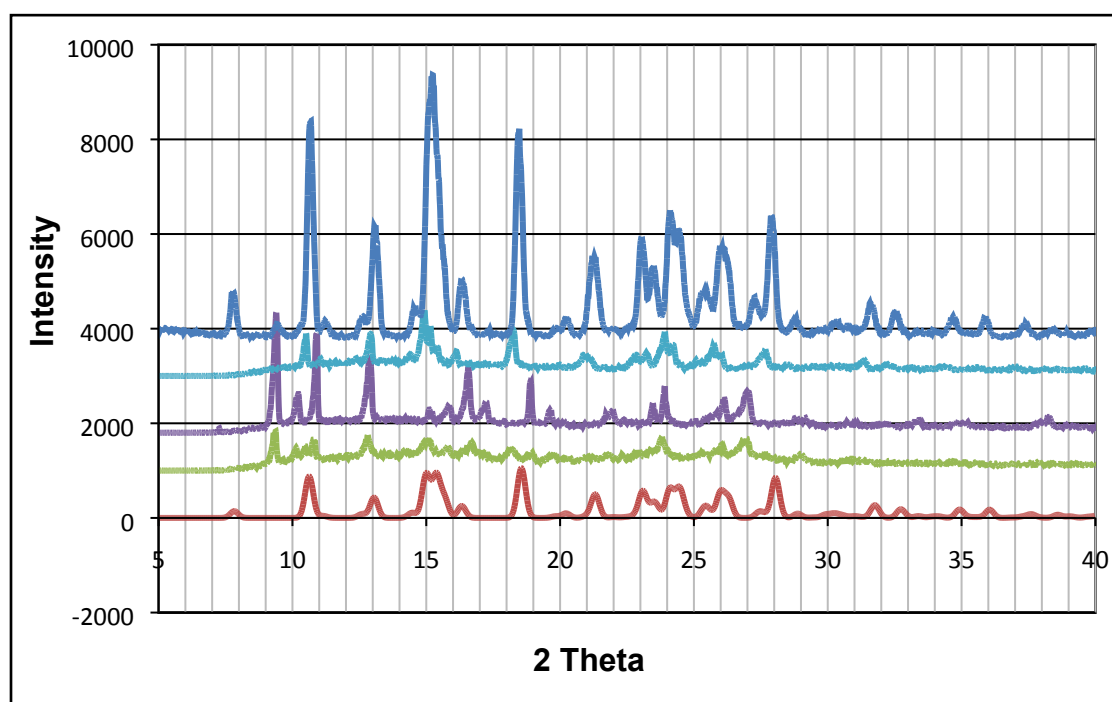


Figure 13 PXR D patterns of $VA \cdot ACRI$ calculated (red), ground product (green), physical mixture (purple), slurry (sky blue) and liquid assisted ground product (blue).

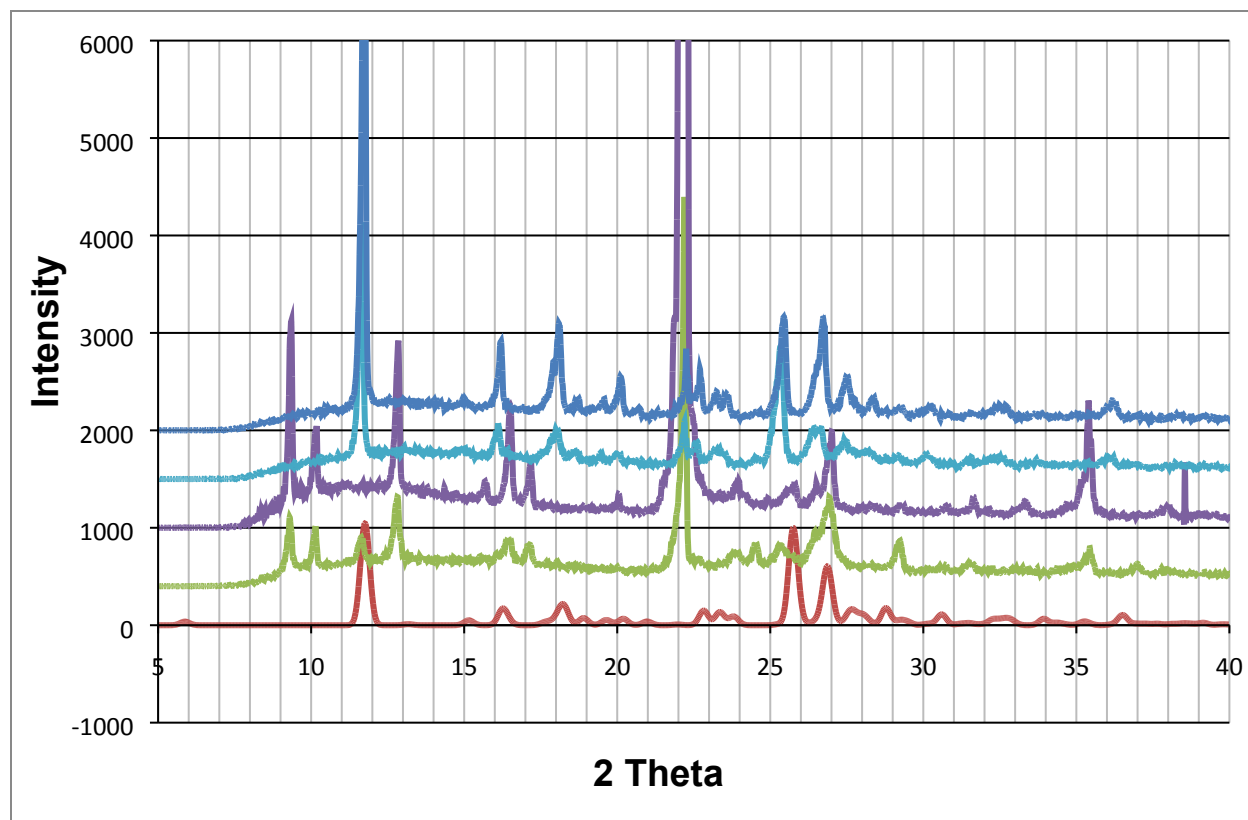


Figure 14 PXRD patterns of **2VA•2U** calculated (red), ground product (green), physical mixture (purple), liquid assisted ground product (sky blue) and slurry (blue). Note the peak at $2\theta=6^\circ$ is small compared to peak at $2\theta=11.5^\circ$ for the liquid assisted product.