

Supporting Information for

**Effect of 1D Twisted Water Chains Confined in Channels Formed
by a Gemini Amphiphile on its Crystal Stability**

Yujie Sheng[‡], Junyao Yao[‡], Qibin Chen^{}, Honglai Liu*

Key Laboratory for Advanced Materials and Department of Chemistry, East China University of
Science and Technology, Shanghai, 200237, China

*Corresponding authors: qibinchen@ecust.edu.cn (Q. Chen)

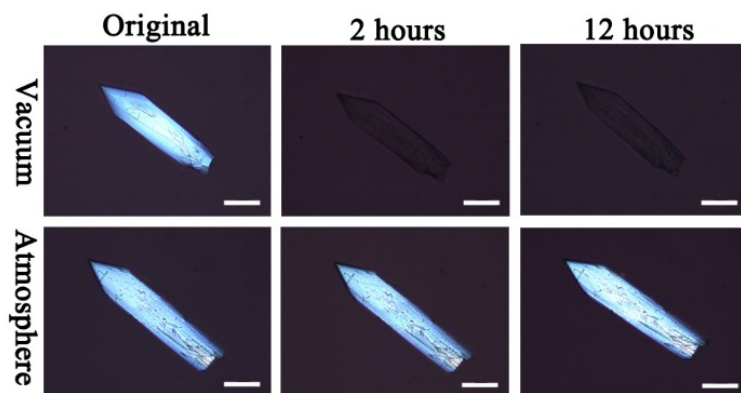


Figure S1. Crystal transition at 65°C in vacuum and atmospheric environment. Scale bar in all images is 100 μm .

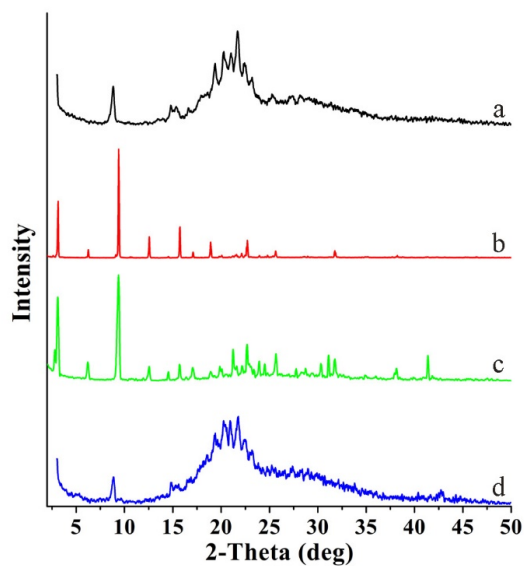


Figure S2. Powder X-ray diffraction profiles of the crystal: a. raw material; b. 12-2Ar crystal; c. water-held crystal; d. water-removed “crystal”.