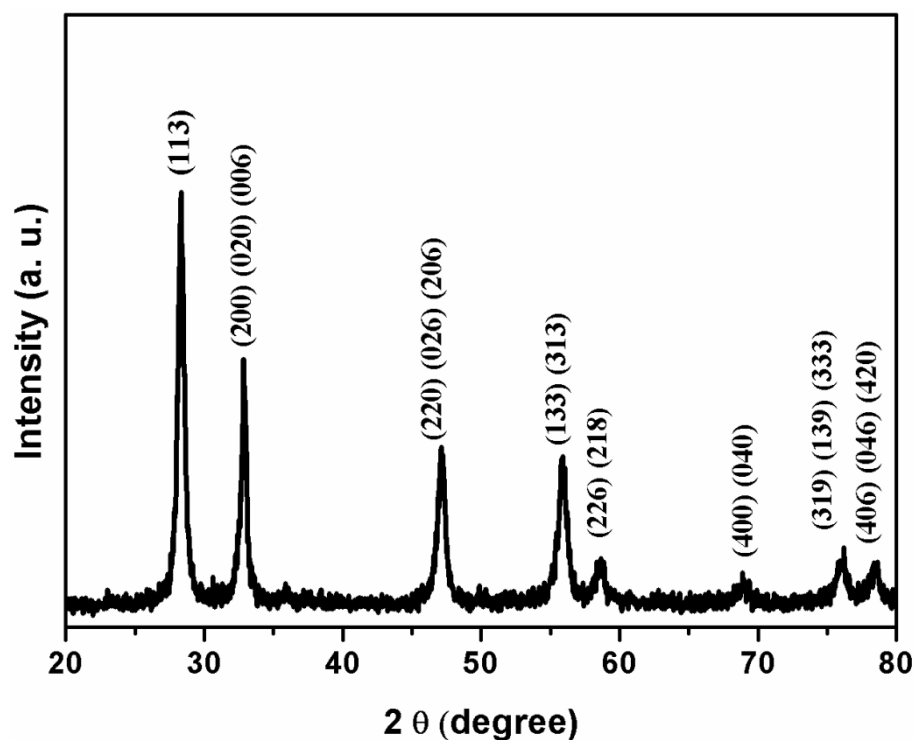


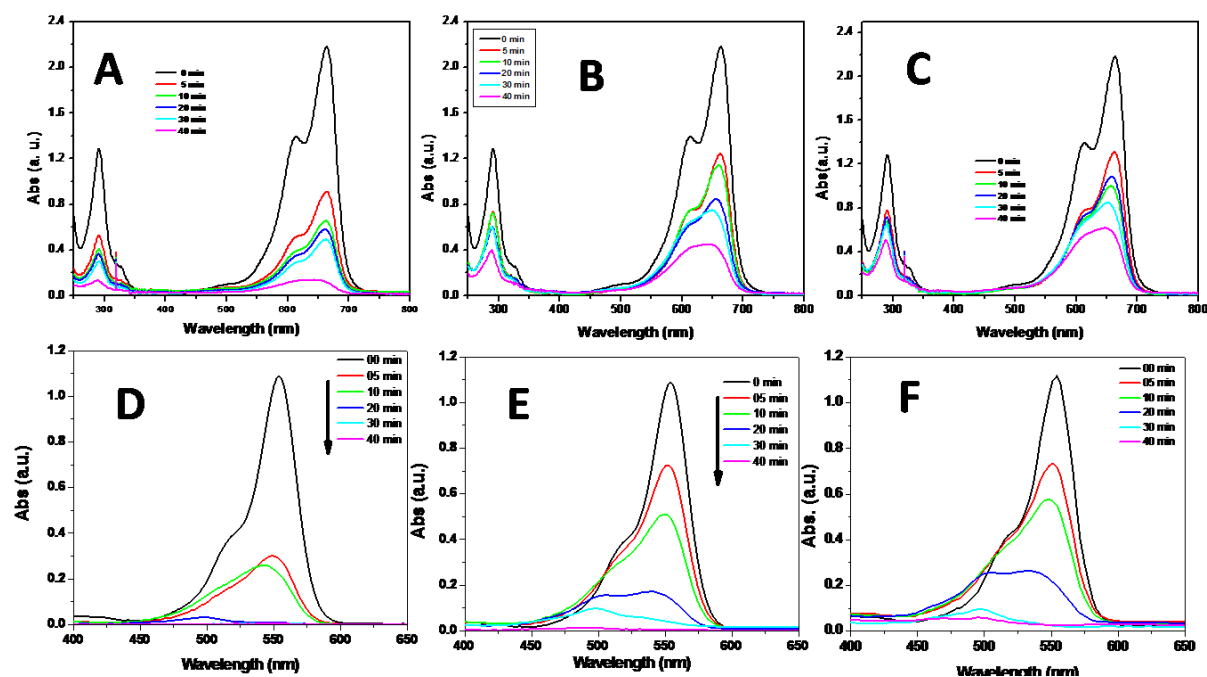
## Supporting Information

### SI.XRD of $\text{Bi}_2\text{WO}_6$ microstructures.



**Figure SI** XRD patterns of  $\text{Bi}_2\text{WO}_6$  microstructures obtained at 150°C and using the concentrations of both  $\text{Bi}^{3+}$  and  $(\text{WO}_4)^{2-}$  precursors 0.075 and 0.0375 M (BWO-3)

## SII Time dependant degradation of the Methylene Blue (MB) and Rhodamine B (RhB) dye



**Figure SII** The temporal evolution of the absorption spectra of the MB (A-C) and RhB (D-F) solution in the presence of  $\text{Bi}_2\text{WO}_6$  microstucture under visible-light irradiation. (A & D: Peony flower, B & E Bowl and C&F: red blood cell)