

Supplemental Material

Electrochemical data of Microperoxidases in phosphate buffer and CTAB micelles

Table S1. MP-11 in phosphate buffer

Sweep rate ( $\text{mV}\cdot\text{s}^{-1}$ )	$E_{pc}$ (mA)	$E_{pa}$ (mA)	$\Delta E_p$ (mA)	$E_{1/2}$ (mV)
10	381	321	60	351
20	382	314	68	348
50	384	303	81	343.5
100	388	300	88	344
200	394	293	101	343.5
400	400	291	109	345.5

Table S2. MP-11 in CTAB micelles

Sweep rate ( $\text{mV}\cdot\text{s}^{-1}$ )	$E_{pc}$ (mA)	$E_{pa}$ (mA)	$\Delta E_p$ (mA)	$E_{1/2}$ (mV)
10	307	249	57	278
20	307.5	249.5	58	278.5
50	308	249	59	278.5
100	310	247	71	276.5
200	311	235	76	273
400	314	228	86	271

Table S3. MP-9 in phosphate buffer

Sweep rate ( $\text{mV}\cdot\text{s}^{-1}$ )	$E_{pc}$ (mV)	$E_{pa}$ (mV)	$\Delta E_p$ (mV)	$E_{1/2}$ (mV)
10	391	333	58	362
20	393	329	64	361
50	399	323	76	361
100	406	313	93	359.5
200	411	309	102	360
400	420	294	126	357

Table S4. MP-9 in CTAB micelles

Sweep rate ( $\text{mV}\cdot\text{s}^{-1}$ )	$E_{pc}$ (mV)	$E_{pa}$ (mV)	$\Delta E_p$ (mV)	$E_{1/2}$ (mV)
10	260.5	203.5	57	232
20	261.2	203.2	57.7	232.2
50	261	203	58	232
100	259.5	201	58.5	230.25
200	260	200.5	59.5	230.25
400	258	198	60	228

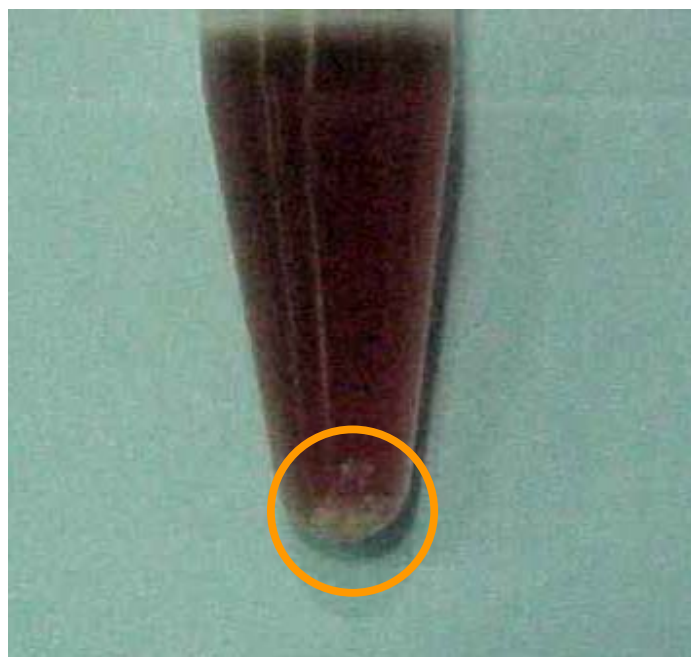


Fig. S1. Photo of the Eppendorf tube containing MP-9/CTAB 20 min after the addition of 0.2 mM DPAA. At the bottom of the tube it is possible to see benzophenone crystals that precipitated.