

Supporting informations.

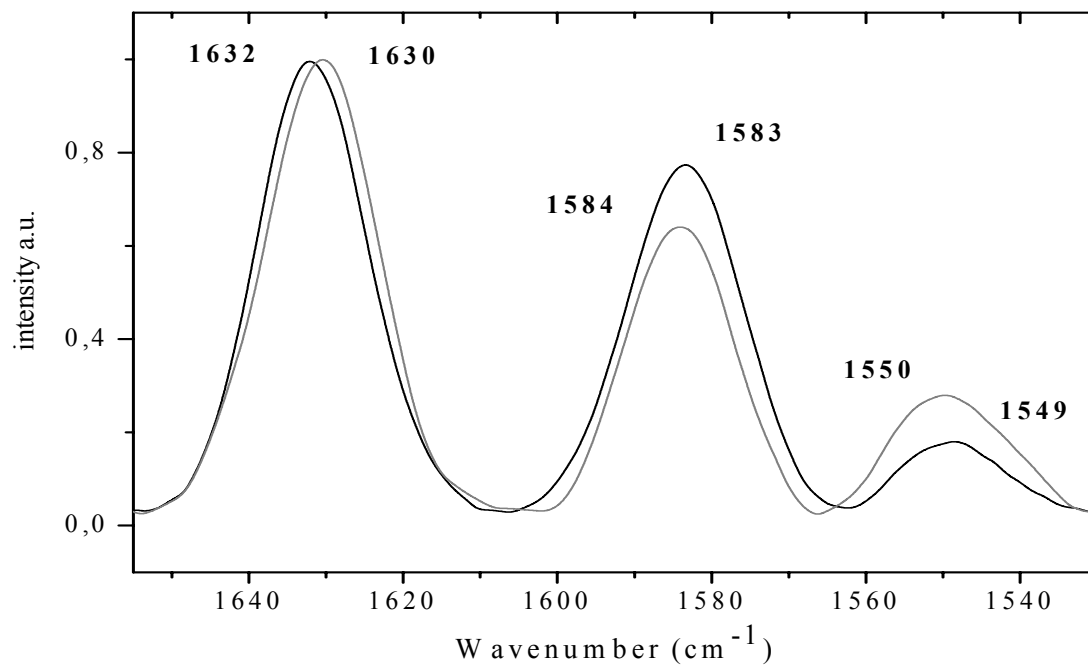


Figure S1: RR data smoothed of AsLOV2wt (black solid line) and AsLOV2-C450A (grey solid line) showing the same difference as in FLN spectra with however a lower sensitivity.

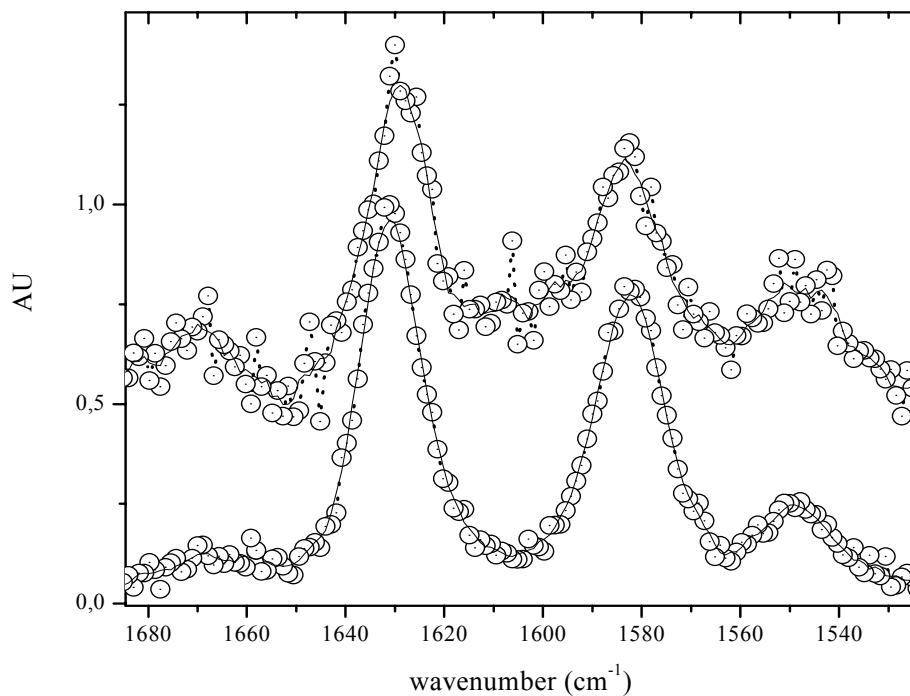


Figure S2: same as figure S1 with raw un-smoothed data points showing the low signal to noise ratio of AsLOV2-C450A RR spectrum (top). This latter is more fluorescent (unquenched) than AsLOV2wt (bottom) which increases the background during RR collection.