

Influence of cyclic polyamines on silica formation during the Stöber process

Sylvie Masse,^a Guillaume Laurent^a and Thibaud Coradin^{*a}

Electronic Supplementary Material

Figure SI-1. Evolution of the ^{29}Si NMR spectra of the samples with the L/Si weight ratio for (a) cyclam , (b) TACN (c) TETL

Figure SI-2. Evolution of the $\{^1\text{H}\}$ - ^{13}C CP NMR spectra of the samples with the L/Si weight ratio for (a) cyclam , (b) TACN (c) TETL

Figure SI-1. Evolution of the ^{29}Si NMR spectra of the samples with the L/Si weight ratio for (a) Cyclam , (b) TACN (c) TETL

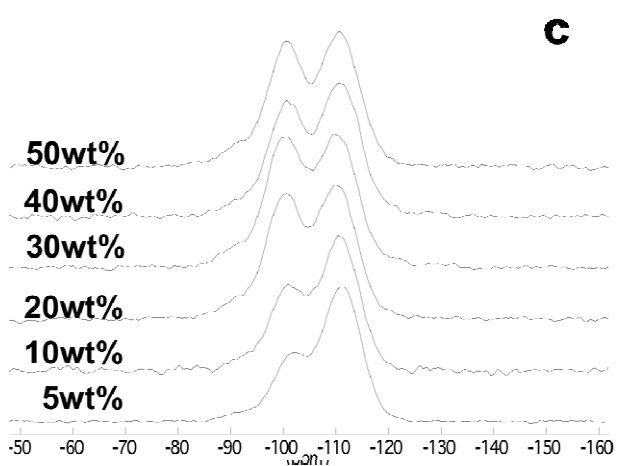
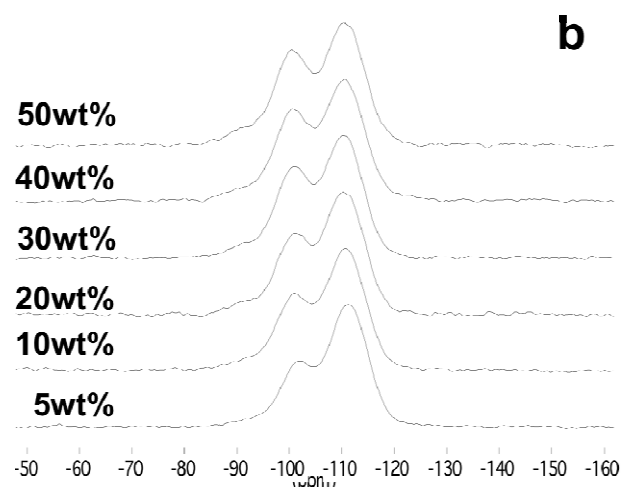
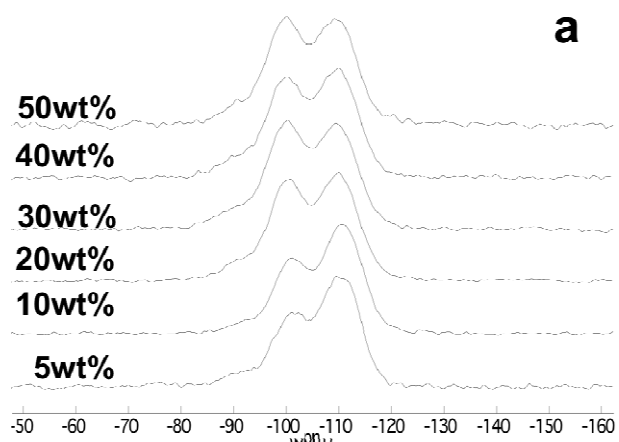


Figure SI-2. Evolution of the $\{^1\text{H}\}\text{-}^{13}\text{C}$ CP NMR spectra of the samples with the L/Si weight ratio for (a) Cyclam, (b) TACN (c) TETL. * impurity

