

Real-time PMIRRAS studies of in situ growth of C₁₁Eg₆OMe on gold and immersion effects

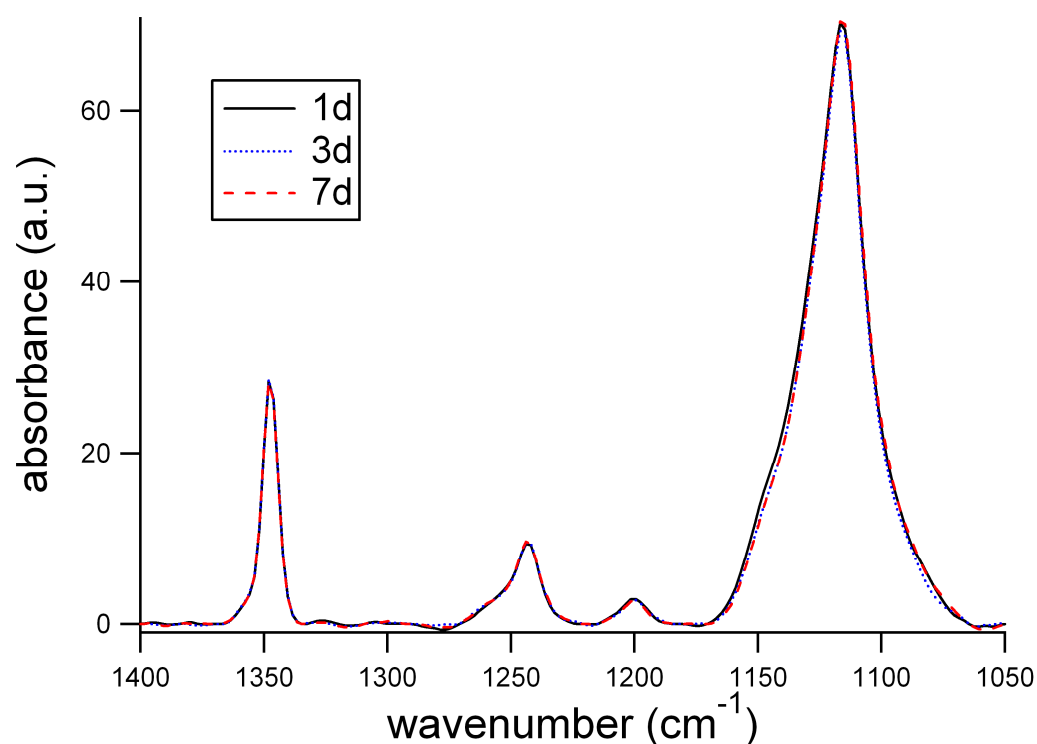
Supplementary Information

¹Stefan Zorn, ^{1,2}Nathan Martin, ¹Alexander Gerlach, ^{1,*}Frank Schreiber

¹ *Institute for Applied Physics, Eberhard-Karls University of Tübingen, Auf der Morgenstelle 10, 72076 Tübingen, Germany.*

² *Montana State University, Bozeman, Montana 59717, USA*

*Corresponding author: frank.schreiber@uni-tuebingen.de



Spectra of Eg₆OMe SAM after growth in aqueous environment; the times (1 day, 3 days, 7 days) are times after start of the growth. No significant changes are observed, providing good evidence for long-term stability under these conditions.