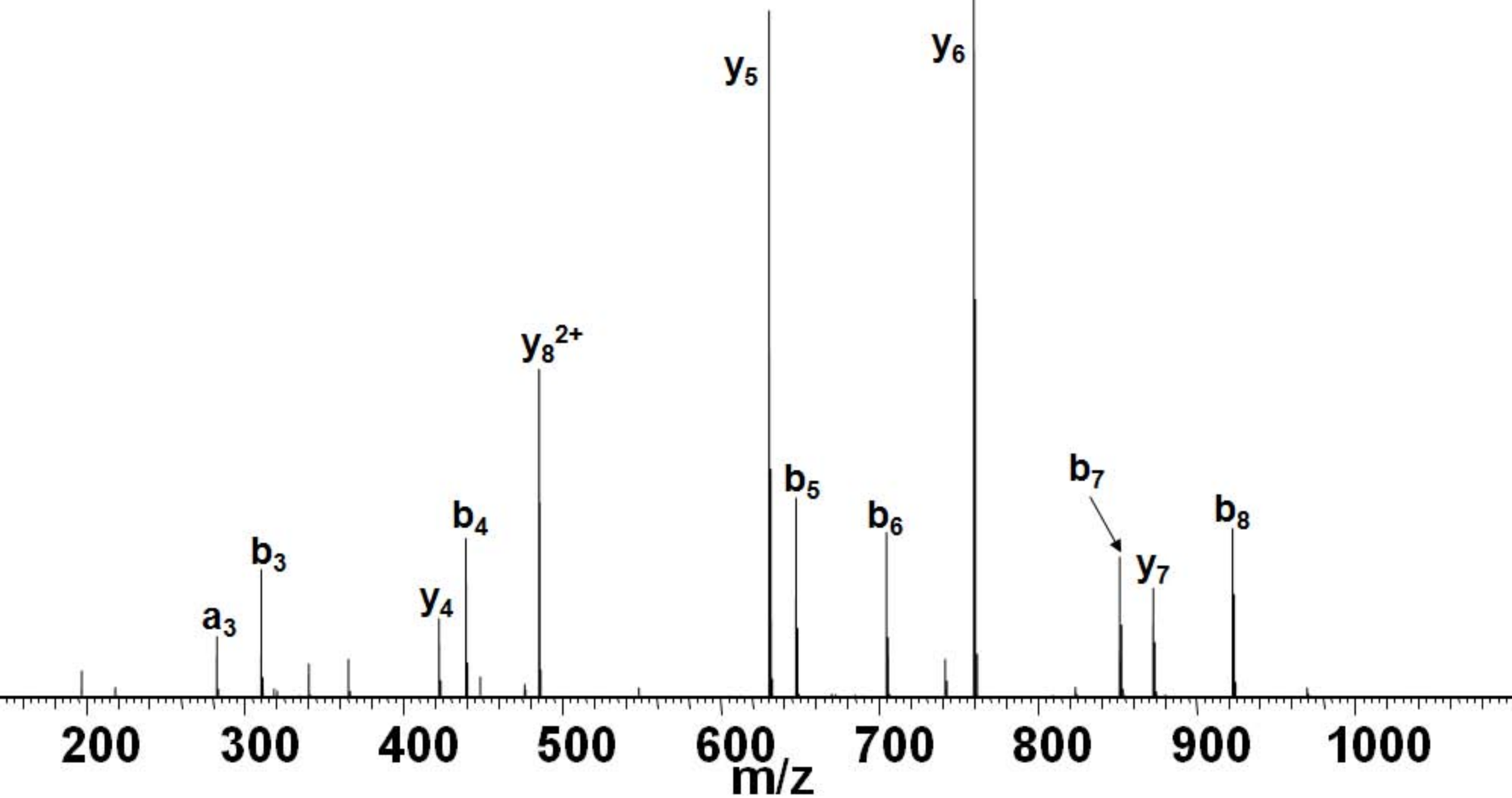
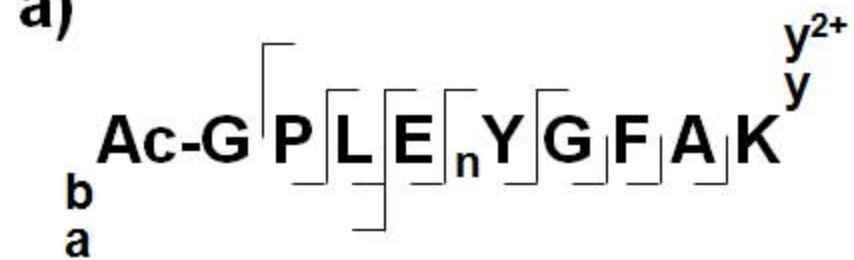
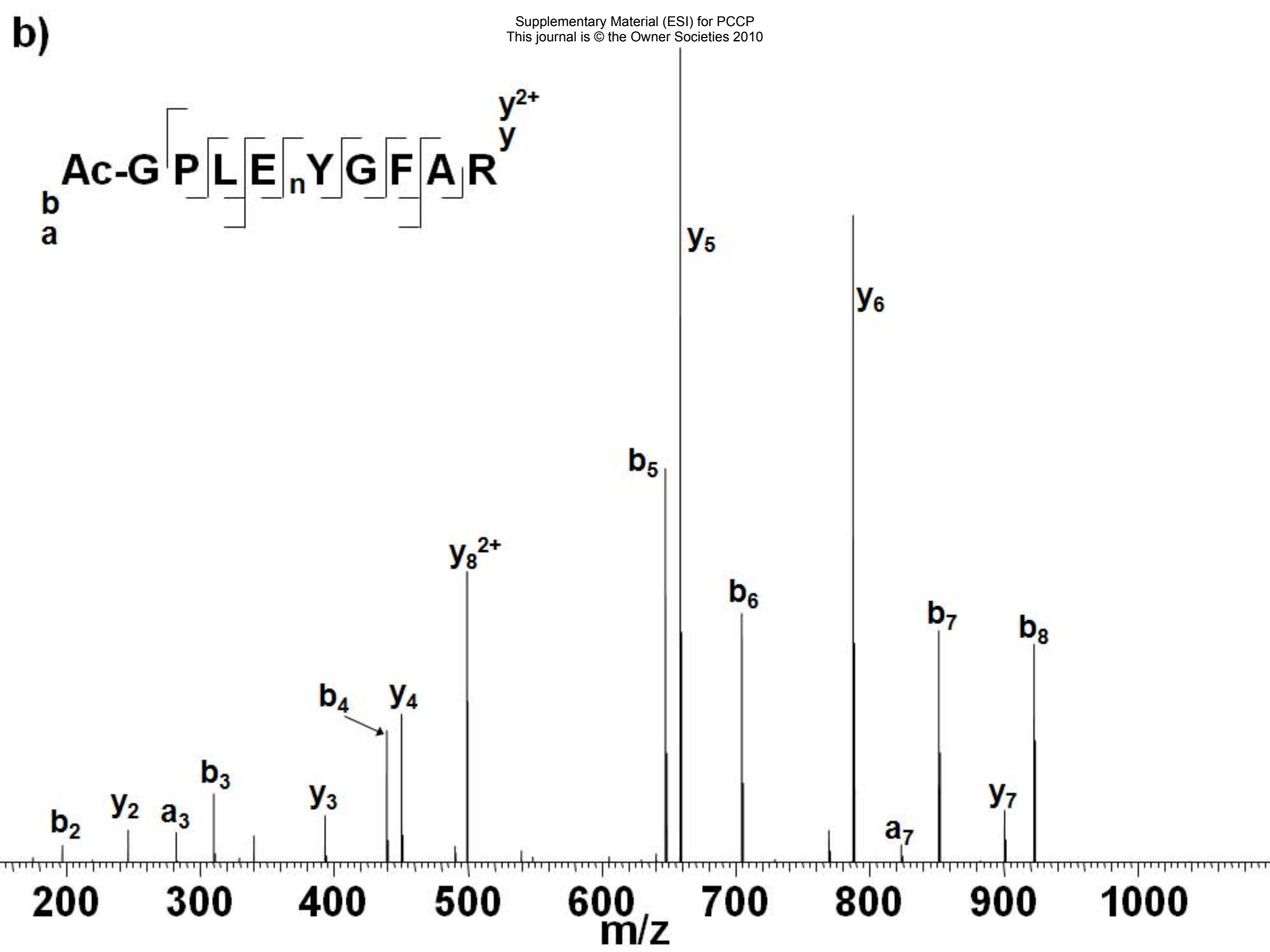


# Supp. Fig. 1

Supplementary Material (ESI) for PCCP  
This journal is © the Owner Societies 2010

a)





CID was completed on a Thermo Finnigan LTQ FT Ultra, with ions isolated and fragmented in the linear ion trap and transferred to the ICR cell for detection. AGC target was  $2 \times 10^5$ , maximum fill time 1 s. Isolation width was  $m/z$  5. CID experiments were performed with helium gas at normalised collision energy 35 %. Each CID scan comprises four co-added microscans. Mass spectra shown comprise of 30 averaged scans.