

Supporting Information

Erythrocyte-like hollow carbon capsules and their application in proton exchange membrane fuel cell

*Jung Ho Kim and Jong-Sung Yu**

Department of Advanced Materials Chemistry, BK21 Research Team, Korea University
208 Seochang, Jochiwon, ChungNam 339-700, Republic of Korea
Fax: (+82)-41-867-5396, E-mail: jsyu212@korea.ac.kr

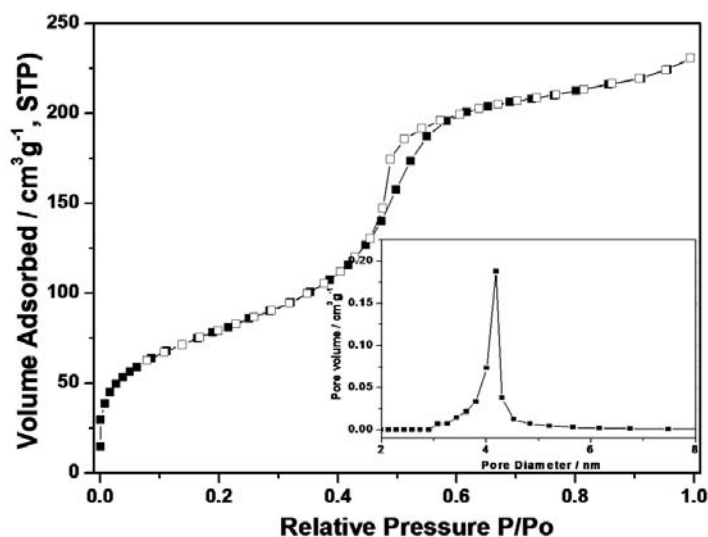


Fig. S1 N₂ adsorption-desorption isotherms and pore size distribution of SCMS silica template.