

Supplementary Information for:

Sensitive and selective electrochemical sensing of L-cysteine based on caterpillar-like manganese dioxide-carbon nanocomposite

Chunhui Xiao, Jinhua Chen*, Bo Liu, Xiaochen Chu, Liang Wu, Shouzhuo Yao

*State Key Laboratory of Chemo/Biosensing and Chemometrics, College of Chemistry and
Chemical Engineering, Hunan University, Changsha, 410082, P.R. China*

E-mail address: chenjinhua@hnu.edu.cn

Figure S1. Typical HRTEM image of MnO₂-C nanocomposite

Figure S2. Cyclic voltammograms recorded at MnO₂-C/Chit/GC electrode in borate saline buffer with 0.1 mM L-cysteine and pH value of 7.4, 7.8, 8.2, 8.6, 9.0. Scan rate, 100 mV.s⁻¹.

Figure S3. Cyclic Voltammograms recorded at MnO₂-C/Chit/GC electrode in (a) borate saline buffer (pH=7.8) and (b) phosphate buffer solution (pH=7.8) with (solid lines) and without (dotted lines) 0.1 mM L-cysteine. Scan rate, 100 mV.s⁻¹.

Figure S1

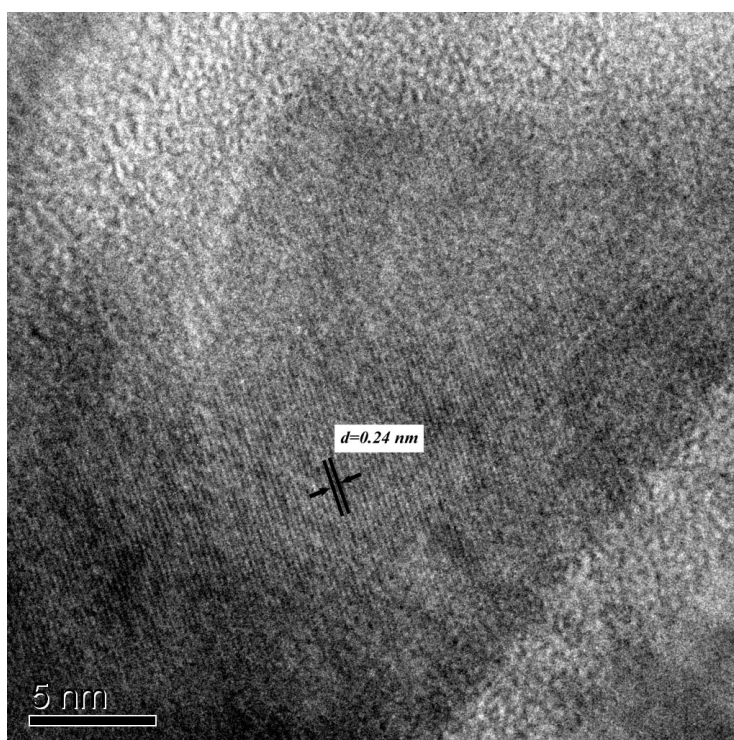


Figure S2

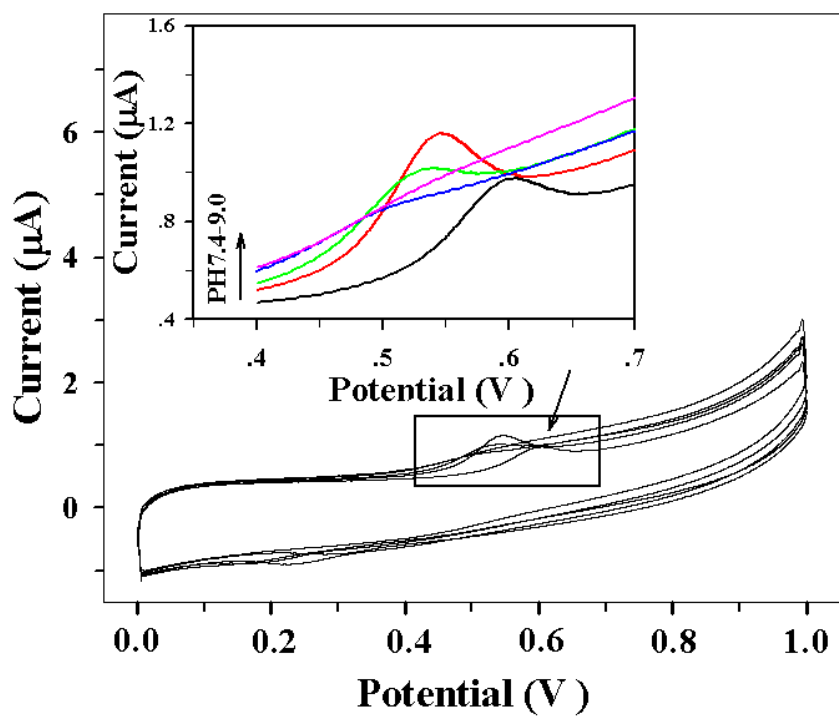


Figure S3

