

Supplemental Material

Cycling behaviour of Li/Li₄Ti₅O₁₂ cells studied by electrochemical impedance spectroscopy

Nina Schweikert, Horst Hahn, and Sylvio Indris

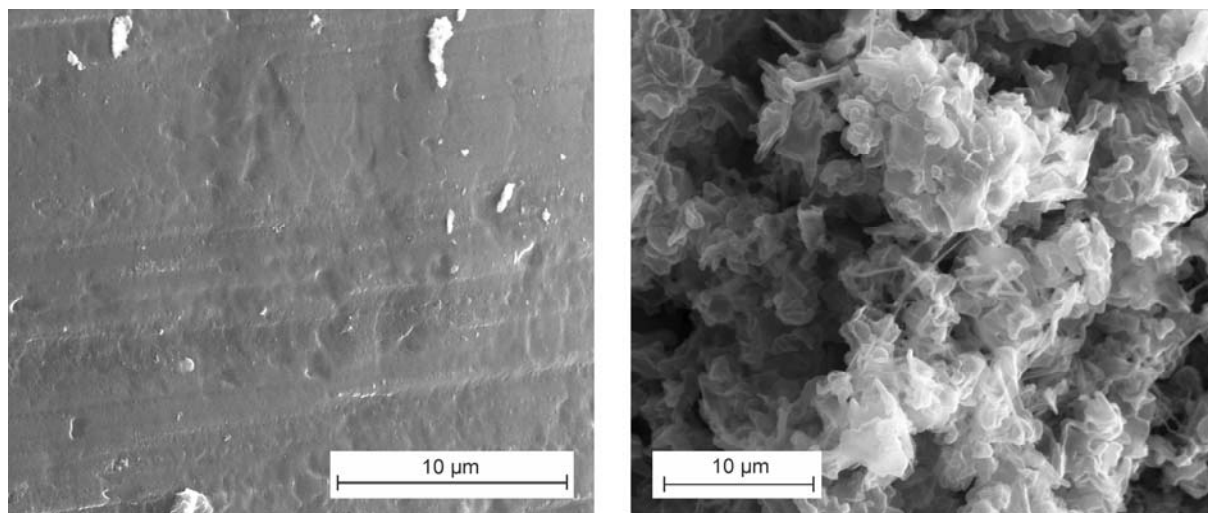


Fig. S1 SEM micrographs of the Li metal electrode surface before and after cycling against a Li₄Ti₅O₁₂ electrode with constant rate of C/2, i.e. complete discharge within 2 h. Left: initial state, right: after five cycles.