

Supporting information for:

Pb intercalation underneath a graphene layer on Ru(0001) and its effect on graphene oxidation

Li Jin, Qiang Fu*, Rentao Mu, Dali Tan, Xinhe Bao*

State Key Laboratory of Catalysis, Dalian Institute of Chemical Physics, the Chinese Academy of Sciences, Dalian 116023, P.R. China

Figure S1. An in-situ LEEM video acquired from a graphene/Ru(0001) surface subjected to Pb deposition at 180 °C (field of view = 50 μm ; start voltage = 1.8 V). The whole time scale is 300s. The large island is graphene with sector shape. The video can be downloaded from the website:

<http://fruit.dicp.ac.cn/images/Jinli1-Figure S1 Pb intercalation.gif>.

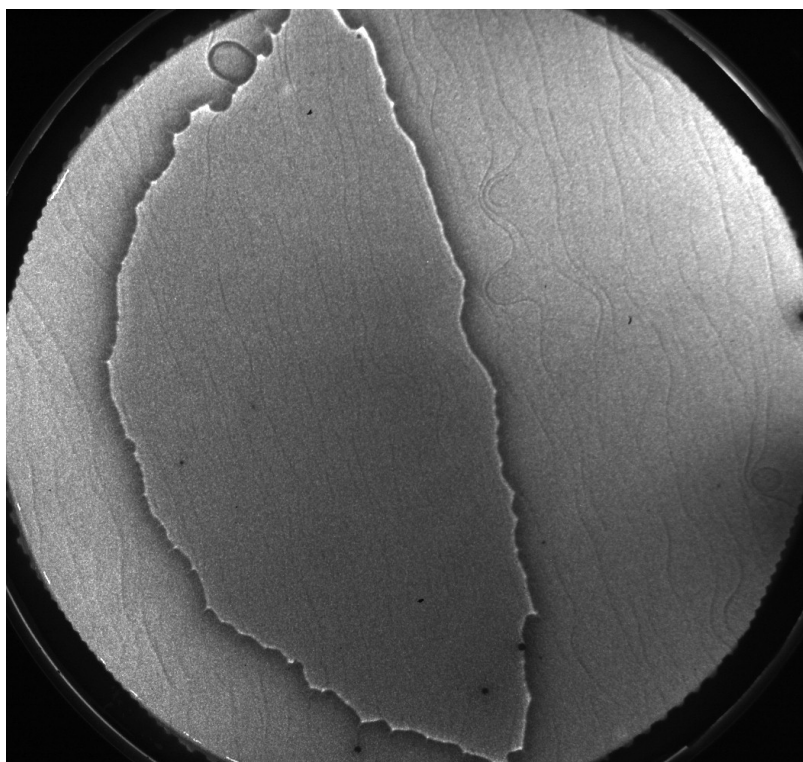


Figure S2. An in-situ LEEM video recorded from the Pb-intercalated graphene/Ru(0001) under 5×10^{-8} torr O_2 and at 700 °C (field of view = 50 μm ; start voltage = 4.1 V). The whole time scale is 240 s. The islands are intercalated graphene sheets with sector shape. The video can be downloaded from the website: <http://fruit.dicp.ac.cn/images/Jinli1-Figure S2 Pb-intercalated graphene O etching.gif>.

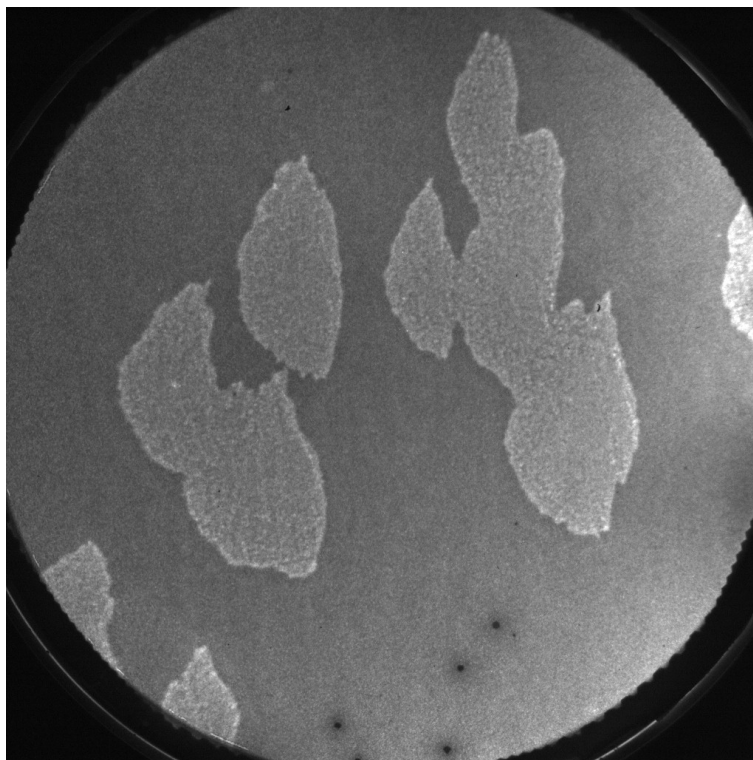


Figure S3. An in-situ LEEM video recorded from the graphene/Ru(0001) under 5×10^{-8} torr O_2 and at 700 °C (field of view = 50 μm ; start voltage = 9.8 V). The whole time scale is 97 s. The islands are monolayer graphene sheets with sector shape. The video can be downloaded from the website:

http://fruit.dicp.ac.cn/images/Jinli1-Figure S3_graphene O etching.gif.

