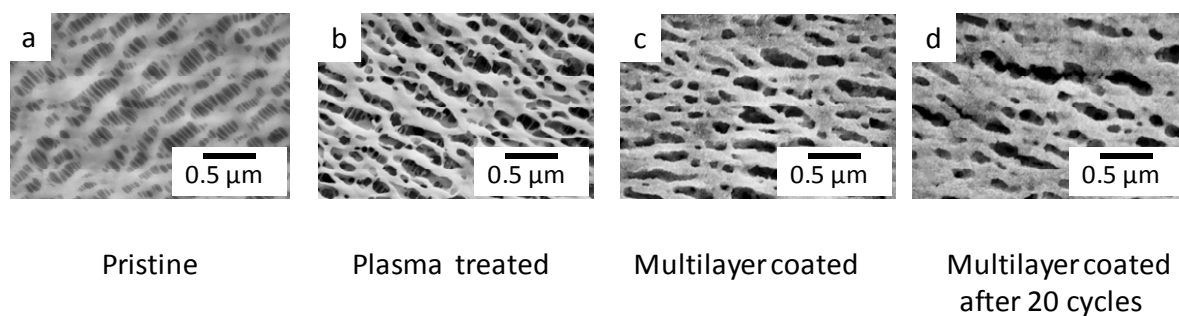


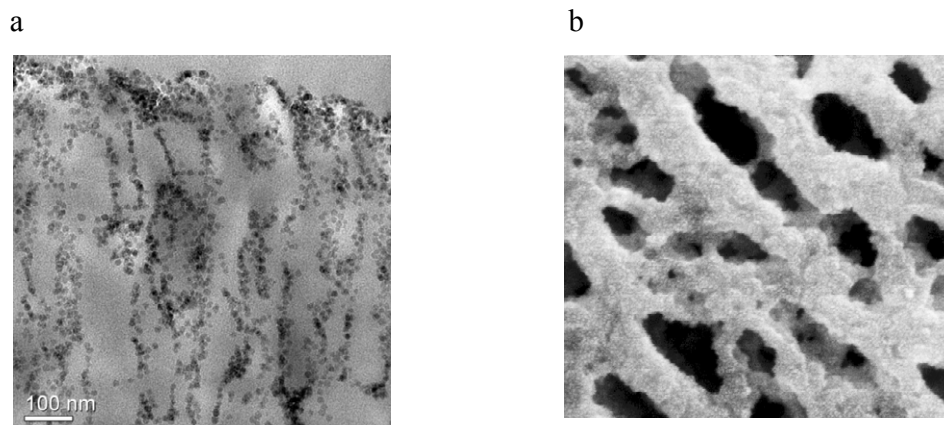
## Supporting Information

### Nanoparticle coated separators for lithium-ion batteries with advanced electrochemical performance

Jason Fang, Antonios Kellarakis, Yueh-Wei Lin, Chi-Yun Kang, Ming-Huan Yang,  
Cheng-Liang Cheng, Yue Wang, Emmanuel P Giannelis, Li-Duan Tsai



S.I. Figure 1. SEM images of (a) pristine, (b) only plasma treated, (c) nanoparticle coated separator and (d) the nanoparticle coated separator after 20 charge/discharge cycles in a lithium-ion cell.



S.I. Figure 2. TEM (a) and SEM (b) images of a nanoparticle coated separator after 100 charge/discharge cycles in a lithium-ion cell.