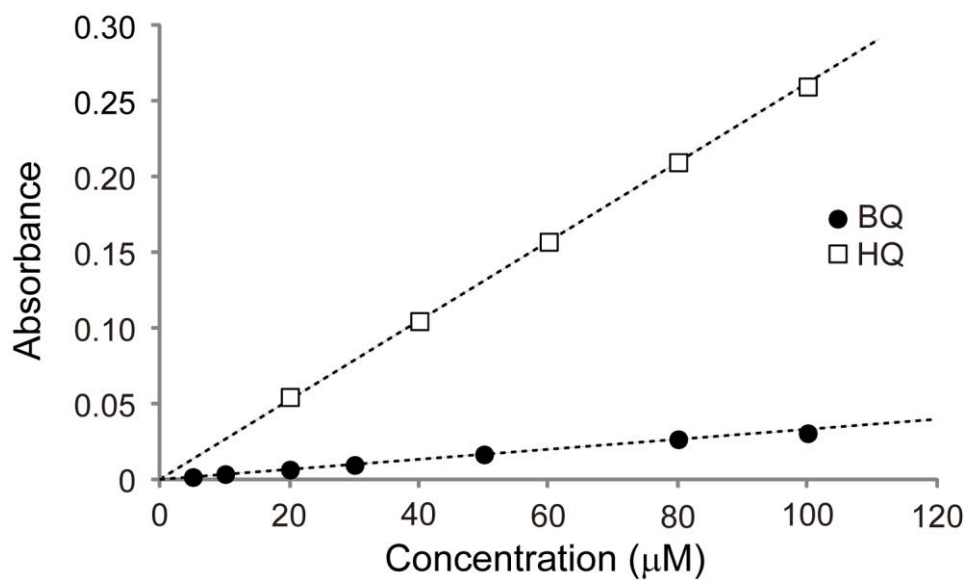


## Supplementary Information

### Photo-sensitive self-motion of a BQ disk

Yui Matsuda<sup>a</sup>, Nobuhiko J. Suematsu<sup>b,c</sup>, and Satoshi Nakata<sup>a\*</sup>

#### 1. Calibration curves for BQ and HQ to evaluate their concentrations in the bulk solution.



**Fig. S1.** Calibration curves on absorbance vs. concentration of BQ (circle) HQ (square) at 288 nm.