

Supplement

Structural evolution and capacity fade mechanism upon long-term cycles in Li-rich cathode material

Bohang Song,^a Zongwen Liu,^b Man On Lai,^a Li Lu*^a

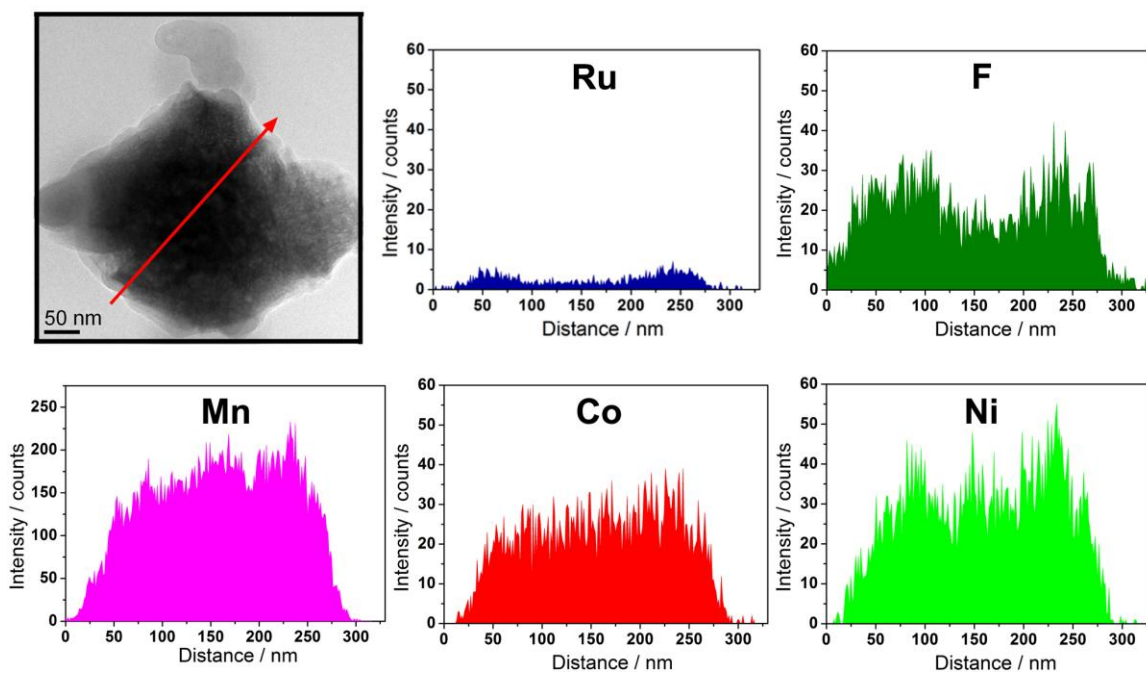


Figure S1. Bright field STEM image of a cyclized LLNCMR particle. The line in the image indicates the area chosen for a line scan EDS analysis.