

Electronic Supplementary Information

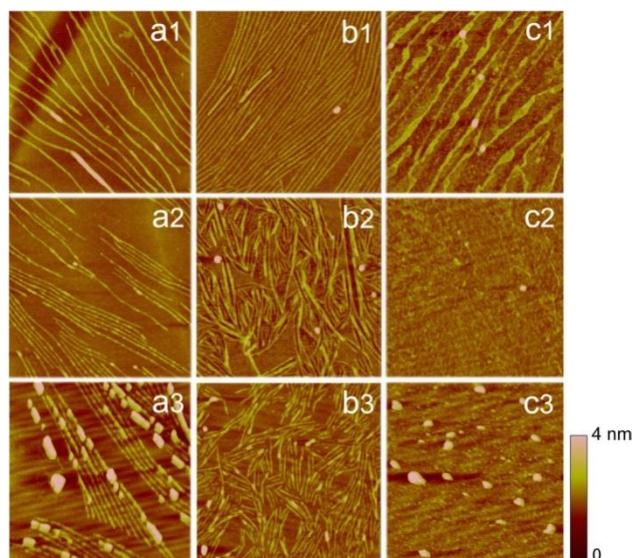


Figure S1. AFM images of SQC14 (a), SQC16 (b) and SQC18 (c) monolayer LB films deposited from water subphase onto mica at the surface pressure of 5 mN/m (a1, b1, c1) and 30 mN/m (a2, b2, c2), as well as of these films at 30 mN/m after photo-irradiation under 365nm for 1 h (a3, b3, c3). The scan scale is 1 μm.