

Supporting Information

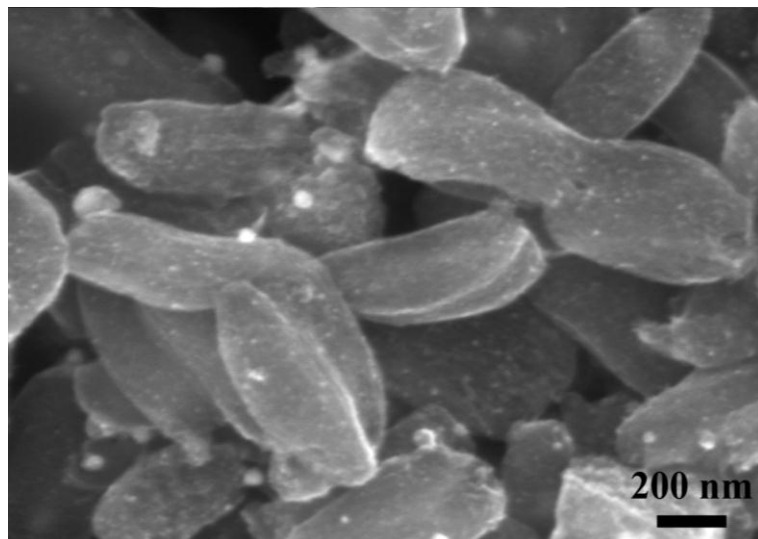


Figure S1. A SEM image of MoO₂/OMC hybrid.

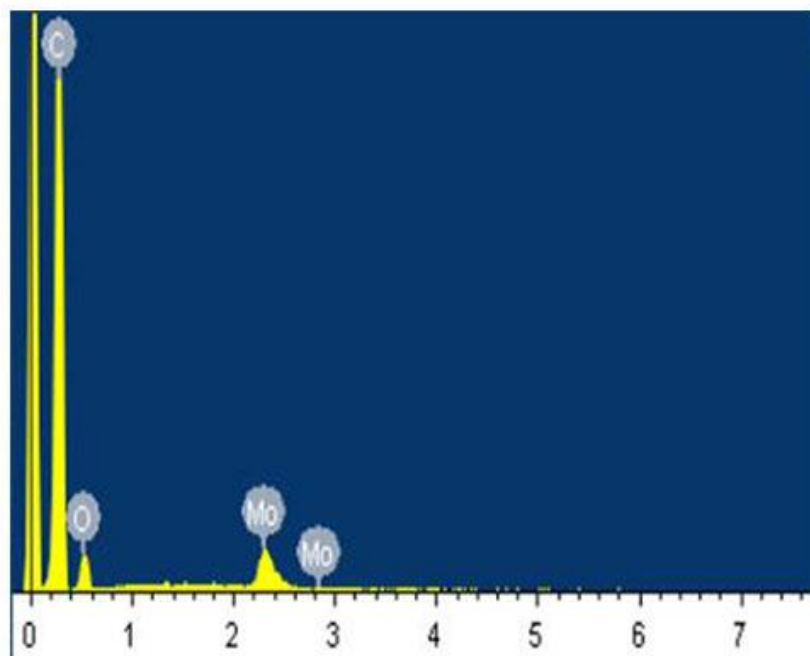


Figure S2. EDS spectrum of the MoO₂/OMC hybrids.

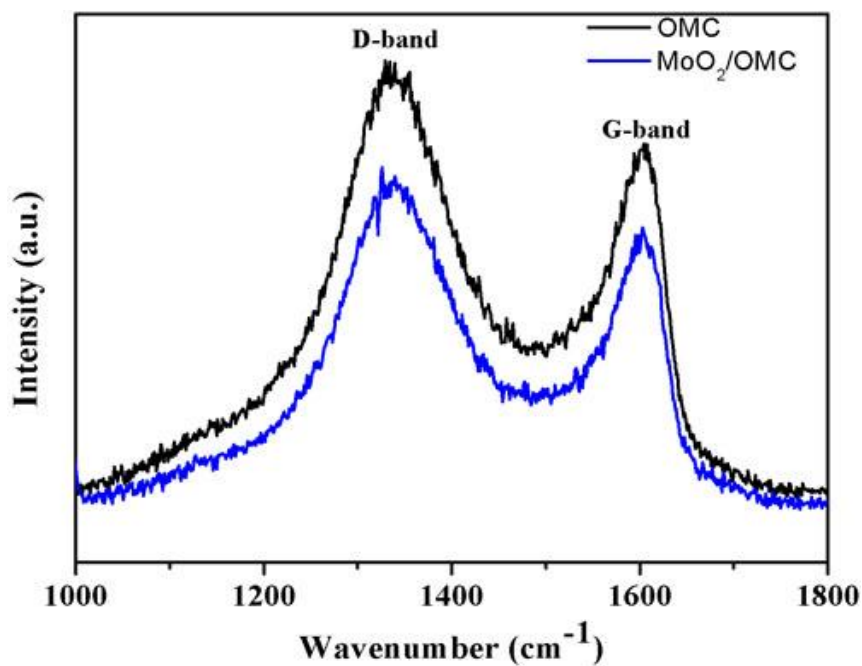


Figure S3. Raman spectra of OMC and MoO₂/OMC hybrids.

The Raman spectrum (Figure S3) displays both D-band and G-band in both OMC and the hybrids, which indicates the existence of carbon in the hybrids.

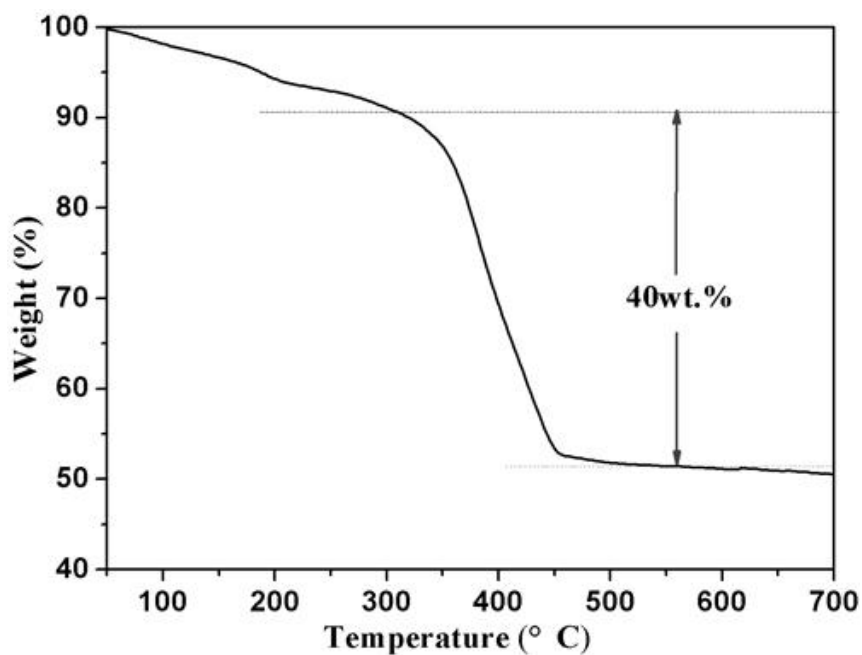


Figure S4. TGA curve of the MoO₂/OMC hybrids under air atmosphere at a rate of 10 °C min⁻¹ from 40 °C to 700 °C.

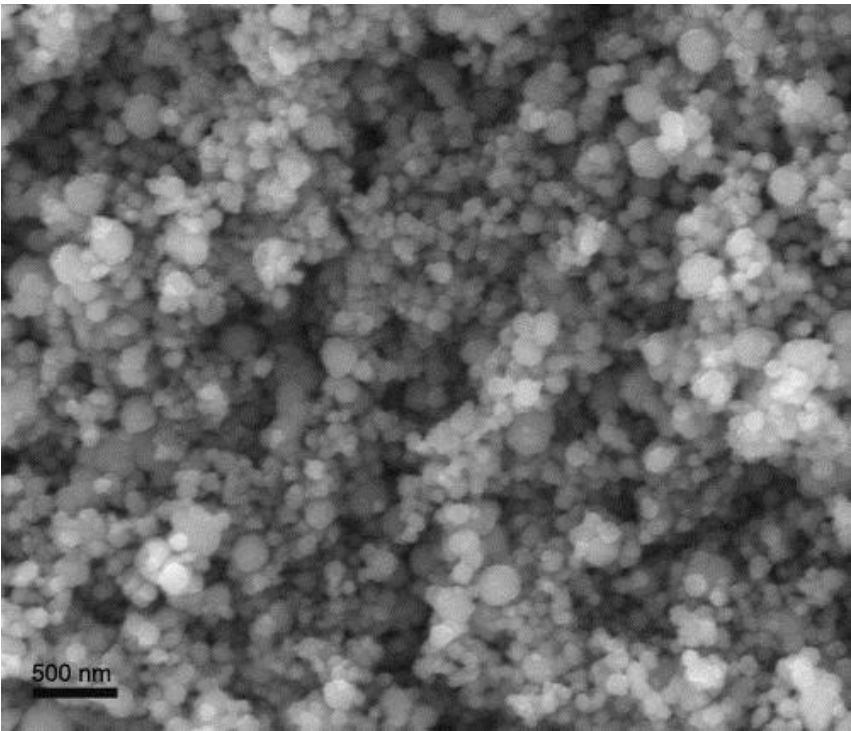


Figure S5. SEM image of pure MoO₂ nanoparticles.

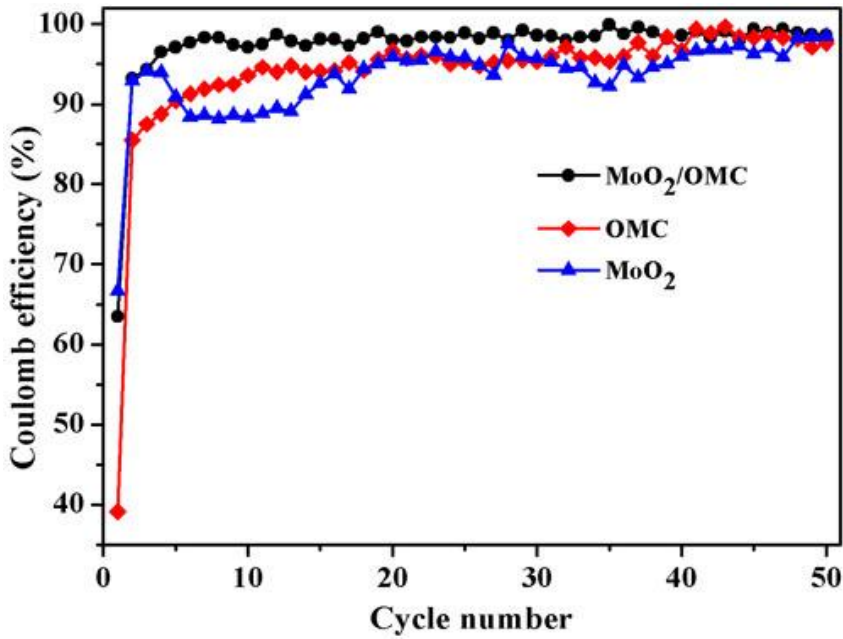


Figure S6. Coulombic efficiency of OMC, pure MoO₂, and MoO₂/OMC electrodes at a current of 100 mA g⁻¹.

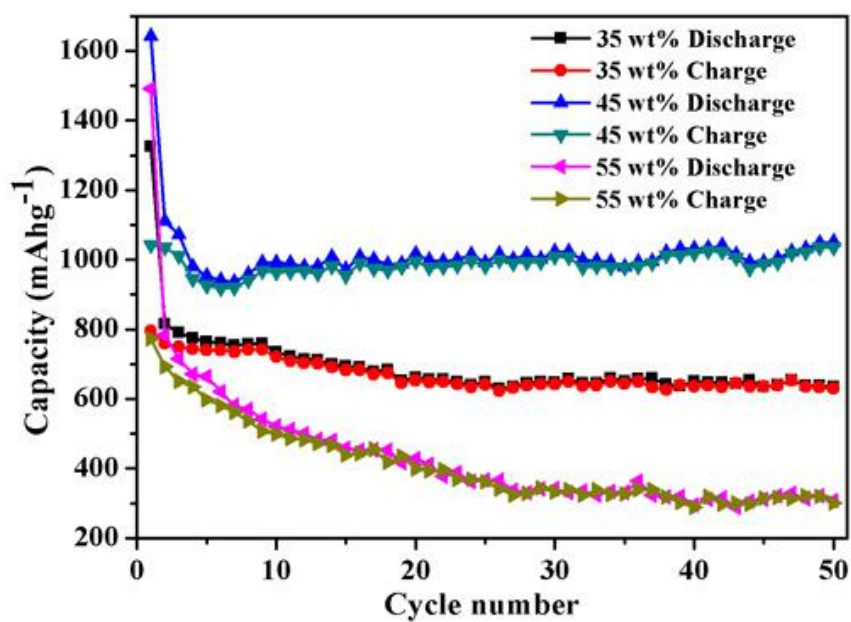


Figure S7. Cycling performance of MoO₂/OMC hybrids with different MoO₂ contents at a current density of 100 mA g⁻¹.

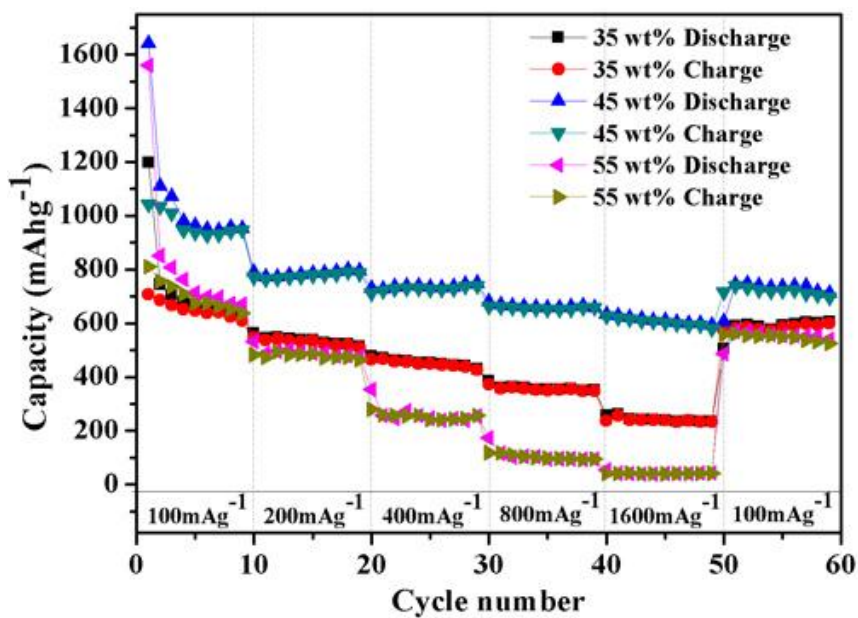


Figure S8. Rate performance with increasing current density from 100 to 1600 mA g⁻¹ of MoO₂/OMC hybrids with different MoO₂ contents.