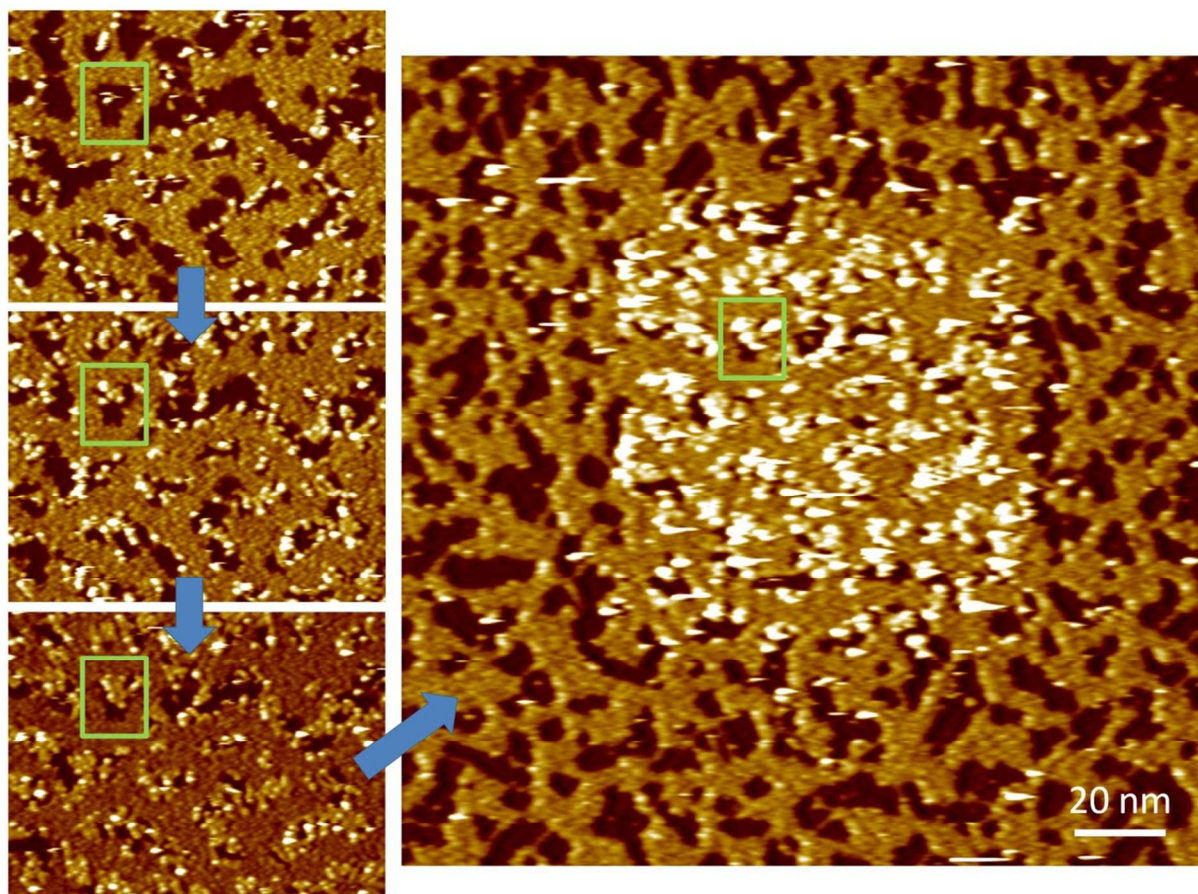


Supplemental Information



Supplemental Figure 1. STM images of 0.1 L HCOOH recorded at 30 K. While scanning consecutive images in one area, the accumulation of bright molecules was seen, trapped in the “pores” formed by the HCOOH on the surface. The molecules appear bright in the images, whereas the underlying Cu(111) substrate is dark. The large STM image on the right shows a 200 nm x 200 nm area of the surface after zooming out from scanning a 100 nm x 100 nm image. It is evident that the STM tip has an influence on scanning the surface, so great care must be taken to scan an area once, before moving to a fresh area.