

Electronic Supplementary Material (ESI)

Clay-supported graphene materials: application to hydrogen storage

Cristina Ruiz-García^a, Javier Pérez-Carvajal^a, Angel Berenguer-Murcia^b, Margarita Darder^a, Pilar Aranda^a, Diego Cazorla-Amorós^b, Eduardo Ruiz-Hitzky^{*a}

^a Department of New Architectures in Materials Chemistry, Instituto de Ciencia de Materiales de Madrid CSIC, Calle Sor Juana Inés de la Cruz 3, E-2804, Madrid, Spain. Fax: +34 913720623; Tel: +34 913349000. E-mail: eduardo@icmm.csic

^b Departamento de Química Inorgánica e Instituto Universitario de Materiales, Universidad de Alicante, Apartado 99, E-03080, Alicante, Spain. Fax: +34 96590345; Tel: +34965909350

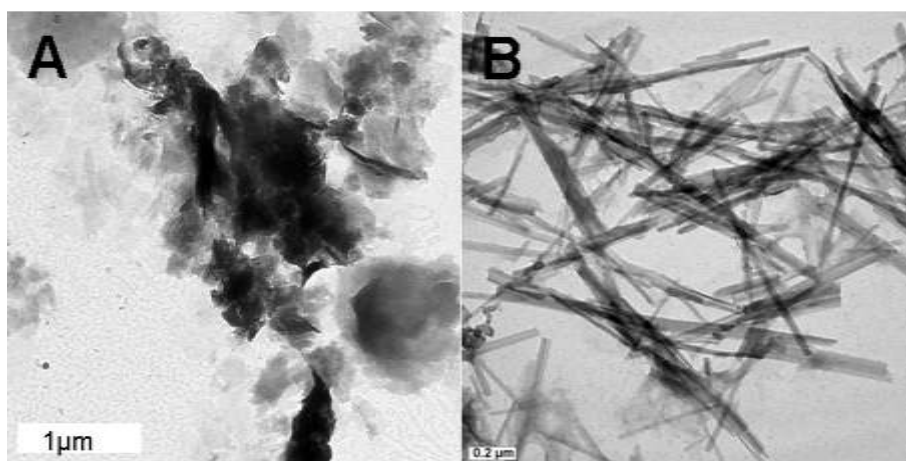


Fig S1. TEM images of starting clays A) montmorillonite, B) sepiolite

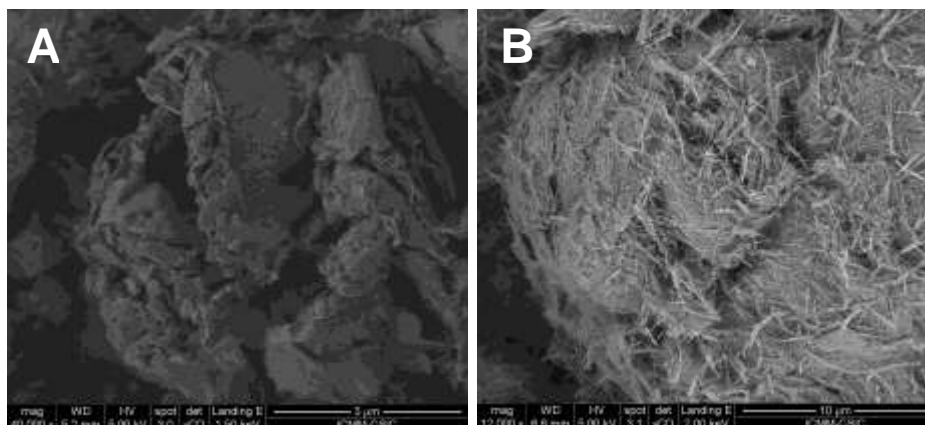


Fig S2. FE-SEM images of starting clays A) montmorillonite, B) sepiolite

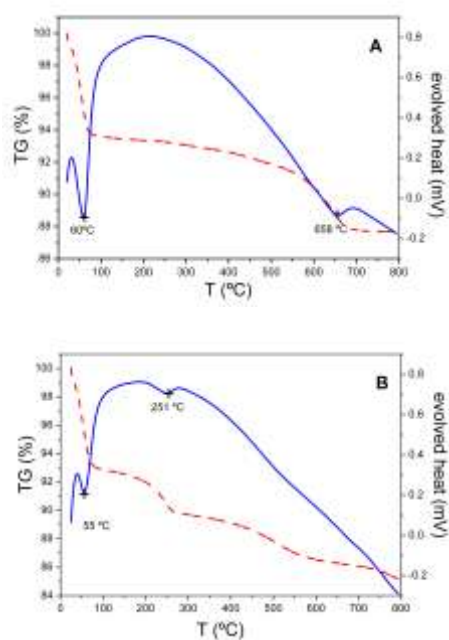


Fig S3. Thermogravimetric (—) and differential thermal analysis (---) of starting clays A) montmorillonite, B) sepiolite