

***In situ* optical studies of methane and biogas oxidation on high temperature solid oxide fuel cell anodes**

John D. Kirtley,^a Daniel A. Steinhurst,^b Jeffery C. Owrutsky,^c Michael B. Pomfret,^{*c} and Robert A. Walker^{*a}

Supporting Information

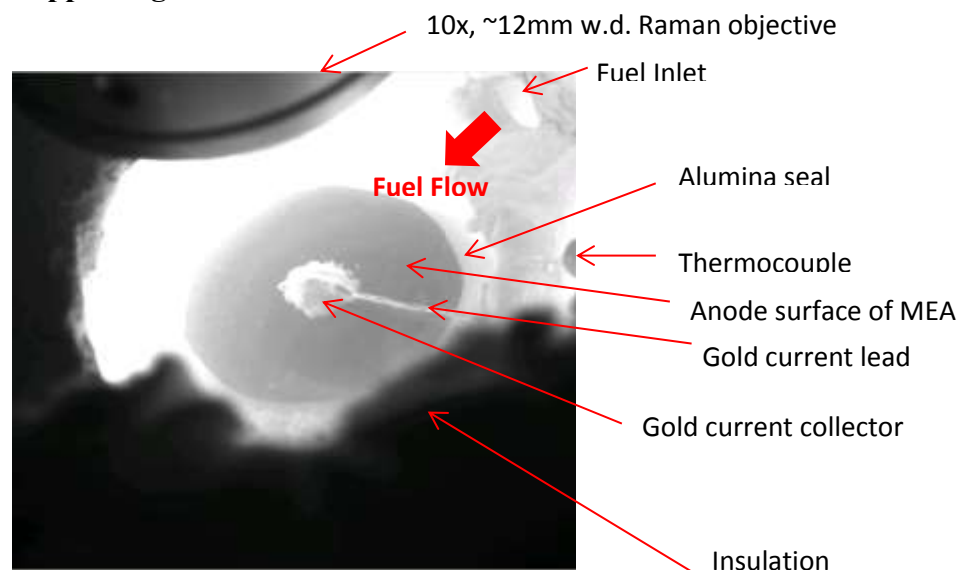


Figure S1. Black and white photograph of an operational anode-supported MEA.

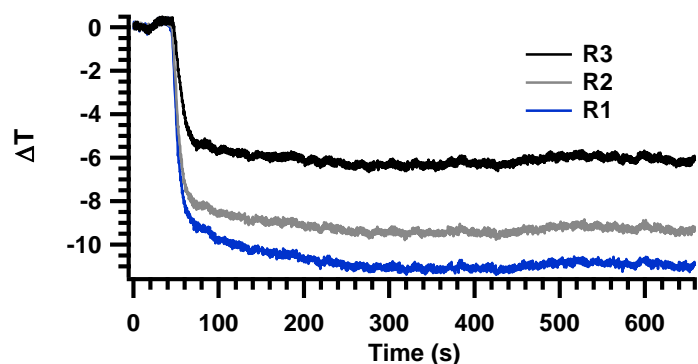


Figure S2. Time-dependent ΔT data collected from three regions as shown in Fig. 1 of the main text, where R1 represents a sample region roughly halfway between the fuel inlet and the gold current collector. R2 represents a region closer to the current collector, and R3 represents a

region away from the fuel stream. This data was collected during anode exposure to biogas under OCV conditions at 800°C.