

Supplementary/Supporting Information

Figure S1. (a) X-ray powder diffractions of $\text{Li}_2\text{MnSiO}_4$ sample prepared by using a spherical SiO_2 template. (b) SEM image of the corresponding spherical SiO_2 .

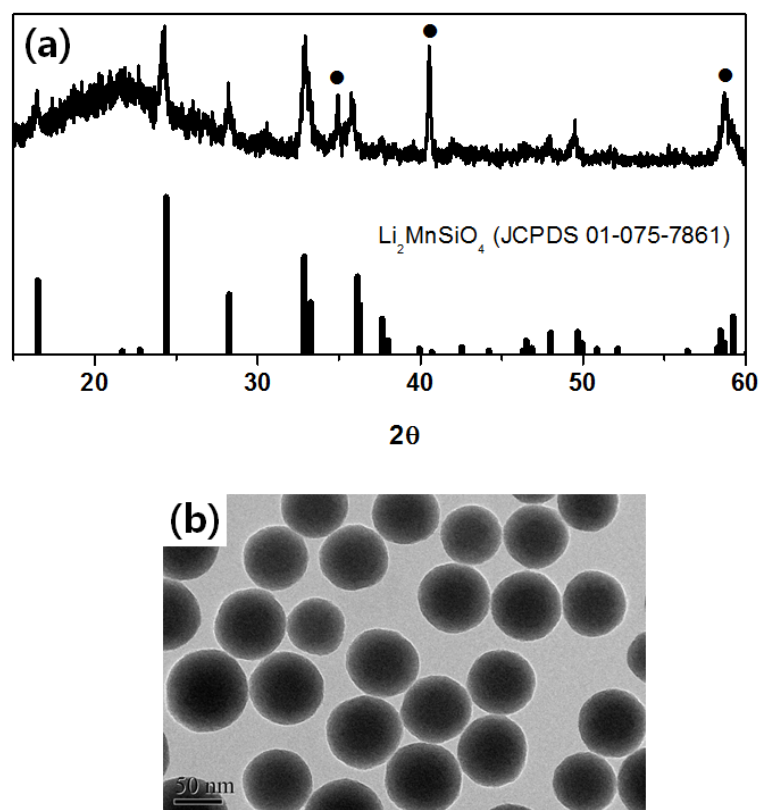


Figure S2. SEM image of pristine $\text{Li}_2\text{MnSiO}_4$ sample prepared by conventional sol-gel process.

