

[Electronic Supplementary Information]

Significant enhancement of photocatalytic activity of rutile TiO₂ compared with anatase TiO₂ upon Pt nanoparticle deposition studied by far-ultraviolet spectroscopy

Ichiro Tanabe,* Takayuki Ryoki and Yukihiro Ozaki*

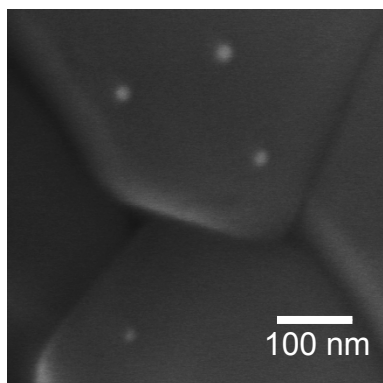


Fig. S1 A typical SEM image of TiO₂-Pt nanoparticles.

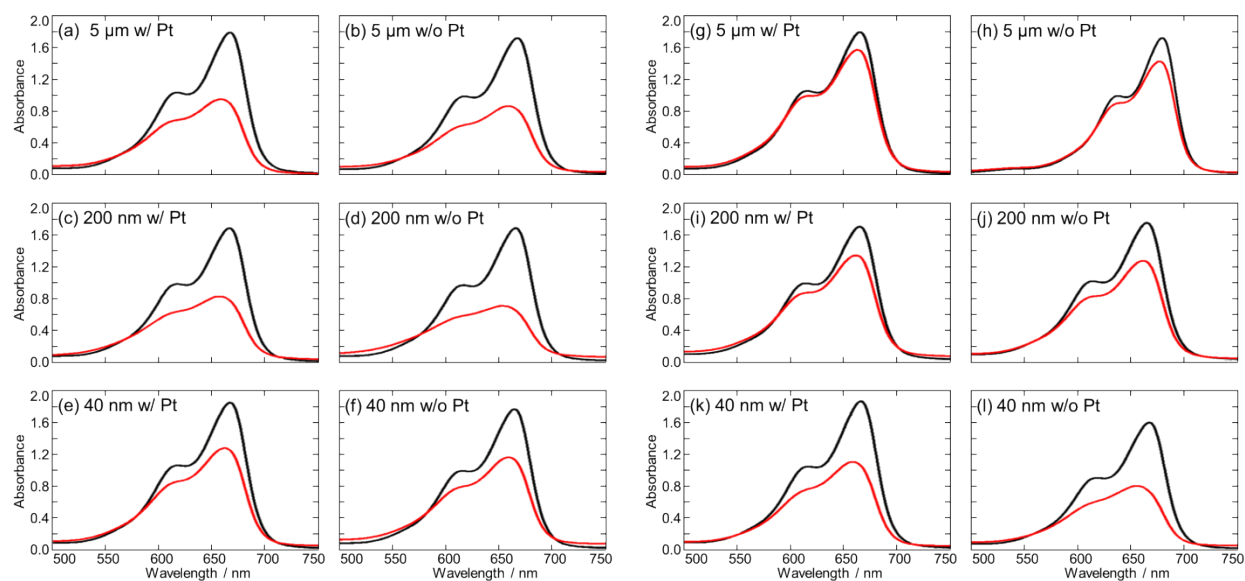


Fig. S2 Absorption spectra of aqueous methylene blue before (black) and after (color) UV light irradiation with (a–f) anatase or (g–l) rutile TiO₂. TiO₂ particle size and state (i.e., whether they were with or without Pt nanoparticles) are described in each graph.