

**Electronic and structural study of Pt-modified Au vicinal surfaces: A model
system for Pt-Au catalysts**

Mauricio J. Prieto, Emilia A. Carbonio, Shadi Fatayer , Richard Landers and Abner de Siervo

Electronic Supplementary Material

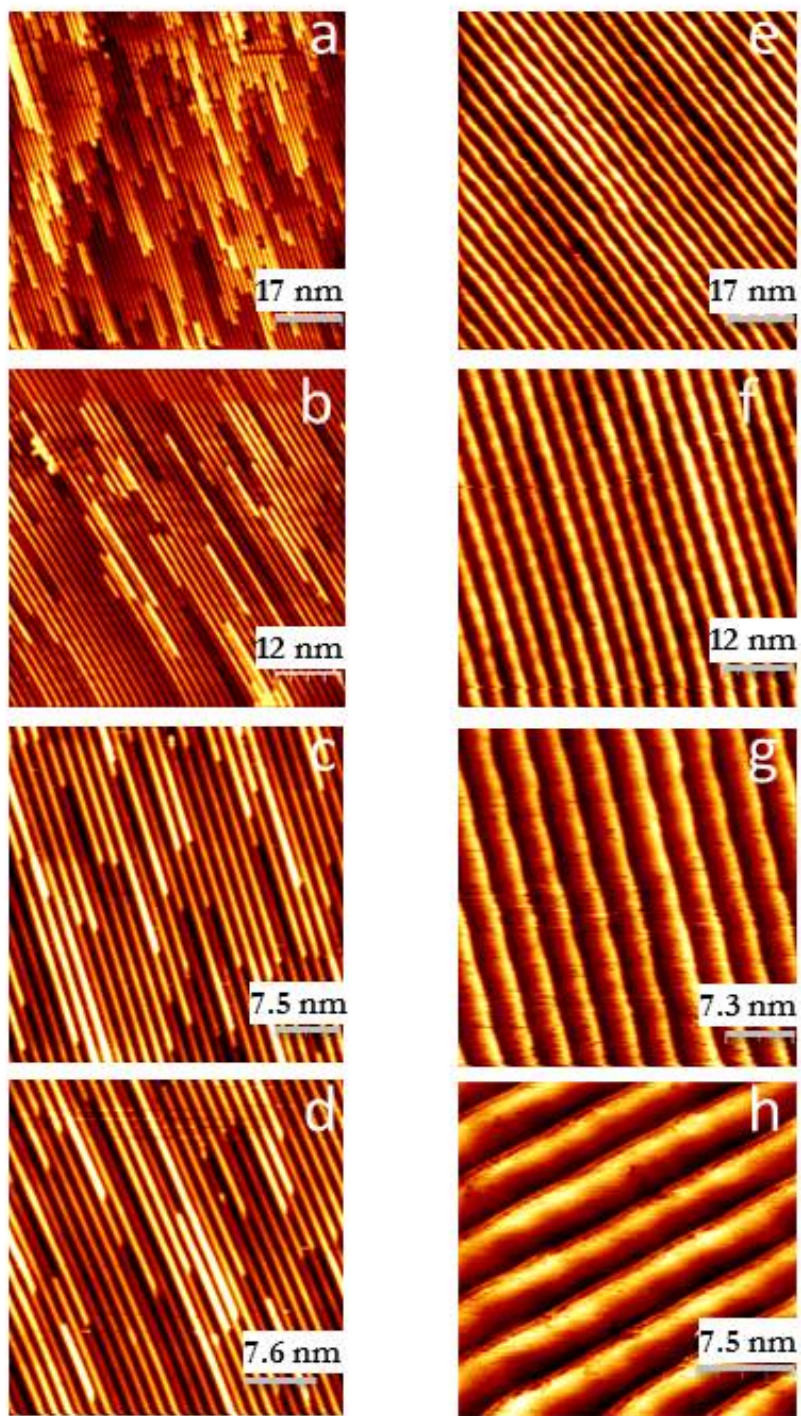


Fig. S1. STM images of clean Au(332) (a-d) and Au(887) (e-h) recorded under similar conditions (V_{bias} and I_t) as in Figure 1.

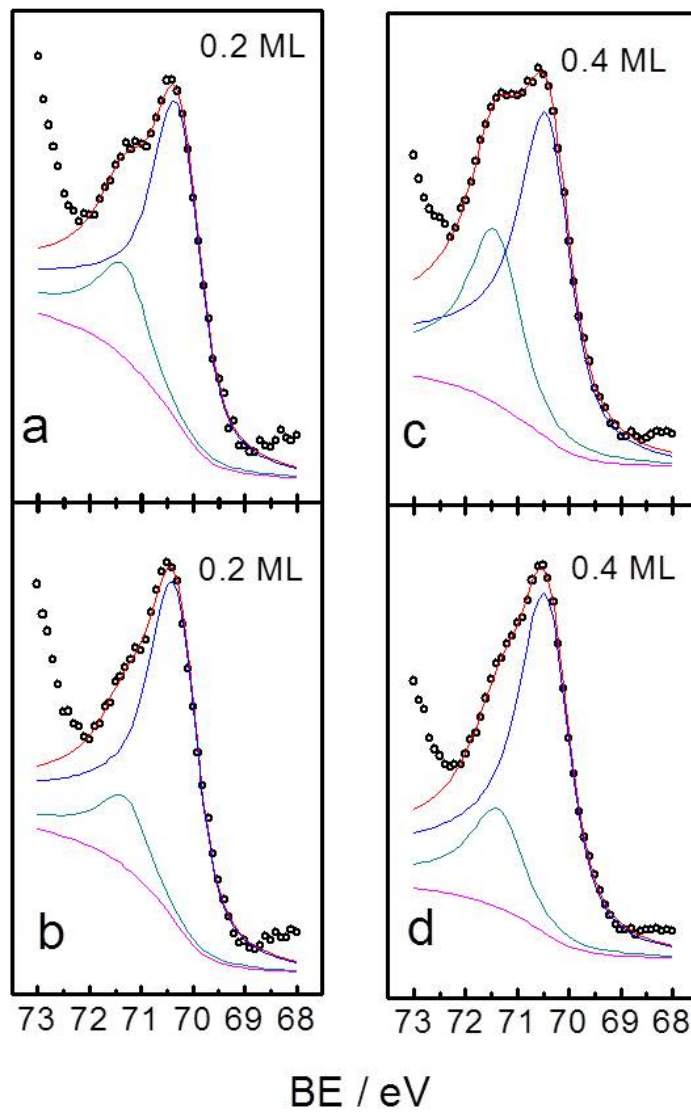


Fig. S2. Results from fitting of Pt $4f_{7/2}$ core photoemission line Pt/Au(332) samples. (a,c) as prepared and (b,d) annealed samples. Pt coverage as indicated.

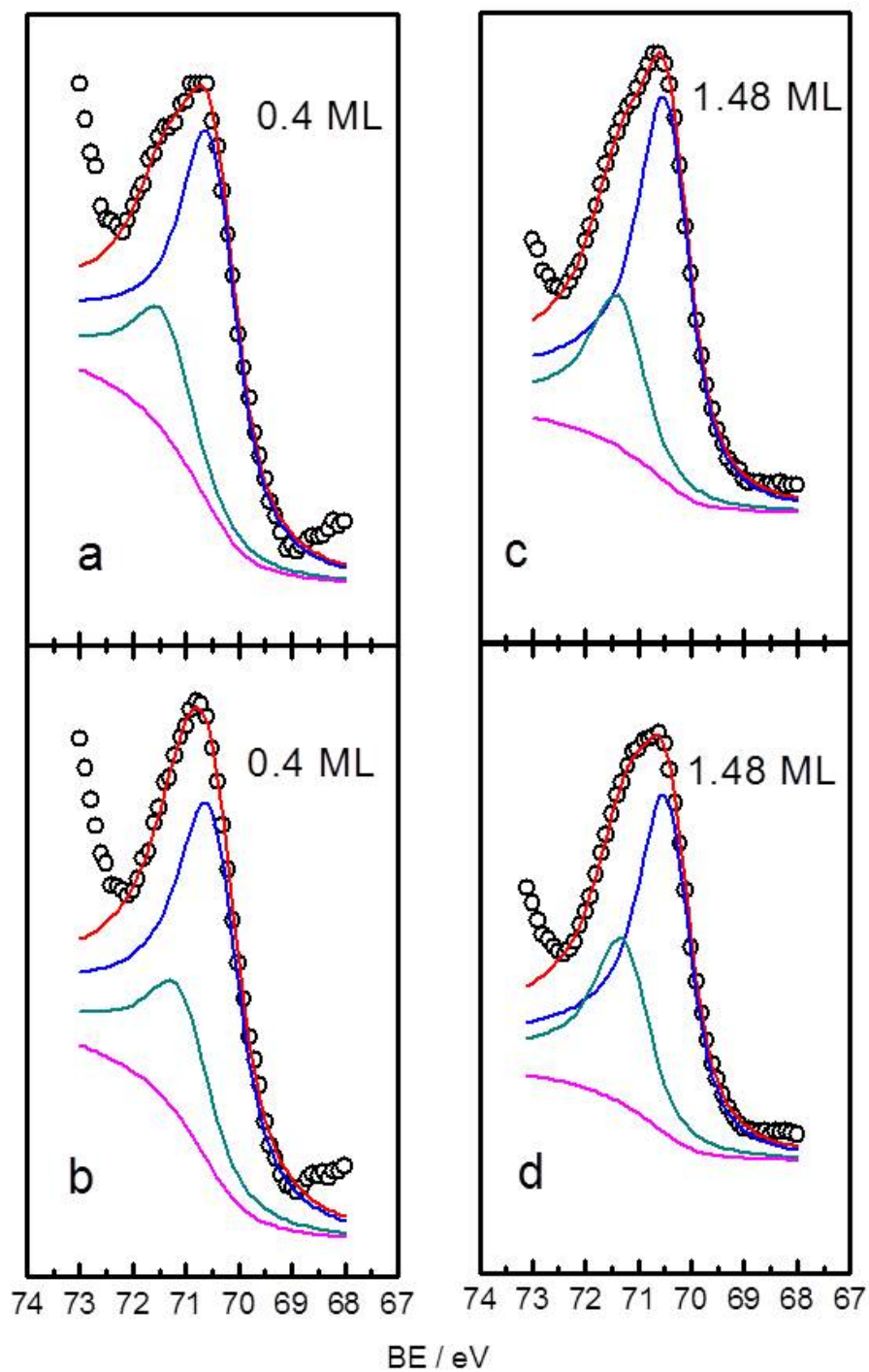


Fig. S3. Results from fitting of Pt $4f_{7/2}$ core photoemission line for Pt/Au(788) samples. (a,c) as prepared and (b,d) annealed samples. Pt coverage as indicated.

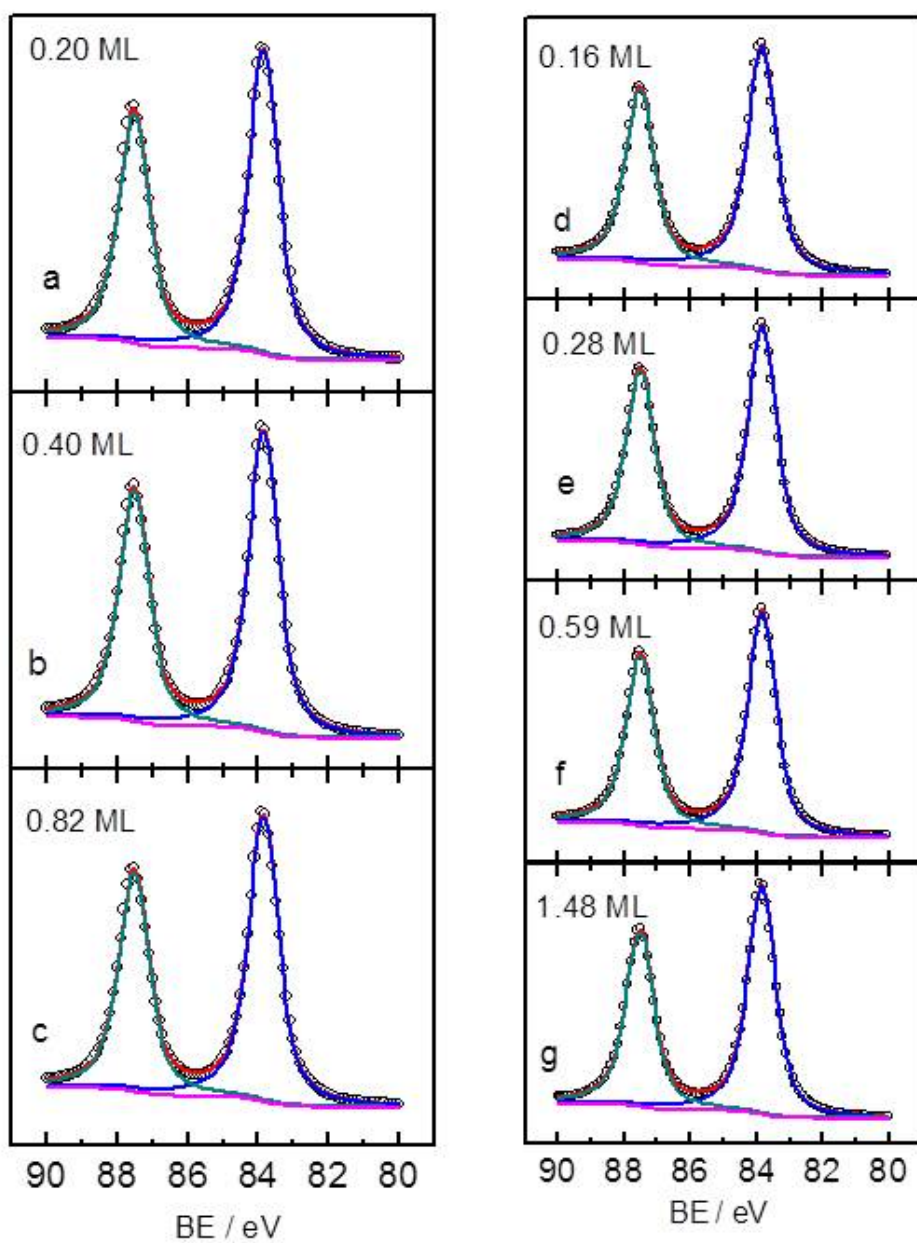


Fig. S4. Results from fitting of Au 4f core photoemission line for the as prepared samples. (a-c) Pt/Au(332) and (d-g) Pt/Au(788). Pt coverage as indicated.