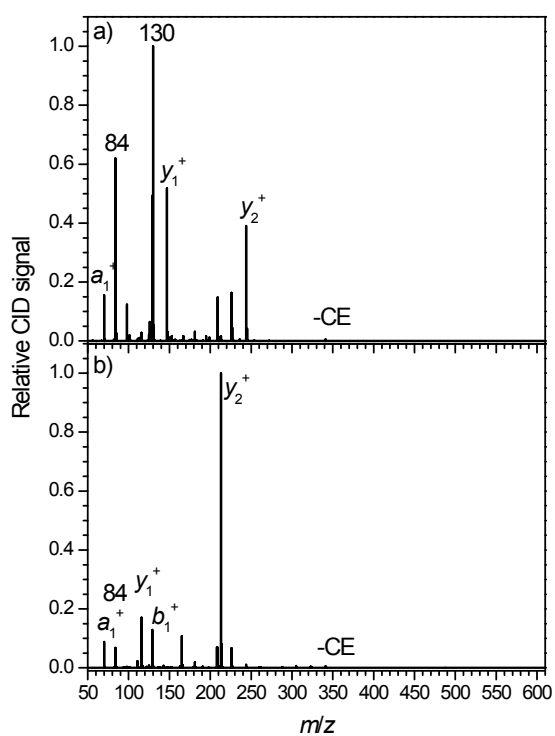


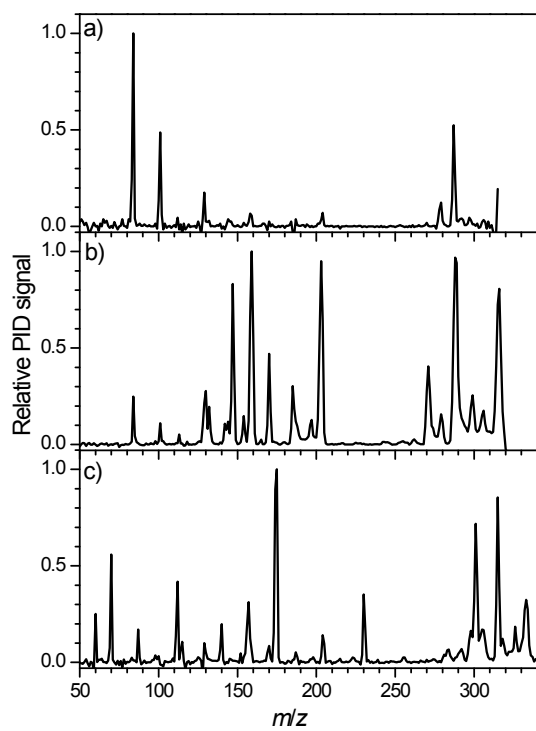
Supporting Information

On the Photostability of Peptides after Selective Photoexcitation of the Backbone: Prompt versus Slow Dissociation

Camilla Skinnerup Byskov, Frank Jensen, Thomas J.D. Jørgensen, Steen Brøndsted Nielsen



Low-energy CID spectra of (a) $[\text{PPK}+\text{H}]^+(\text{CE})$ (m/z 605), collision energy 60 eV in the laboratory frame and (b) $[\text{KPP}+\text{H}]^+(\text{CE})$ (m/z 605), collision energy 50 eV in the laboratory frame.



PID mass spectra of (a) $[\text{KW}+\text{H}]^+$ (m/z 333), (b) $[\text{WK}+\text{H}]^+$ (m/z 333) and (c) $[\text{RW}+\text{H}]^+$ (m/z 361), $\lambda = 210$ nm.