

***In situ* transmission electron microscopy study of sintering and redispersion phenomena
over size-selected metal nanoparticles: environmental effects**

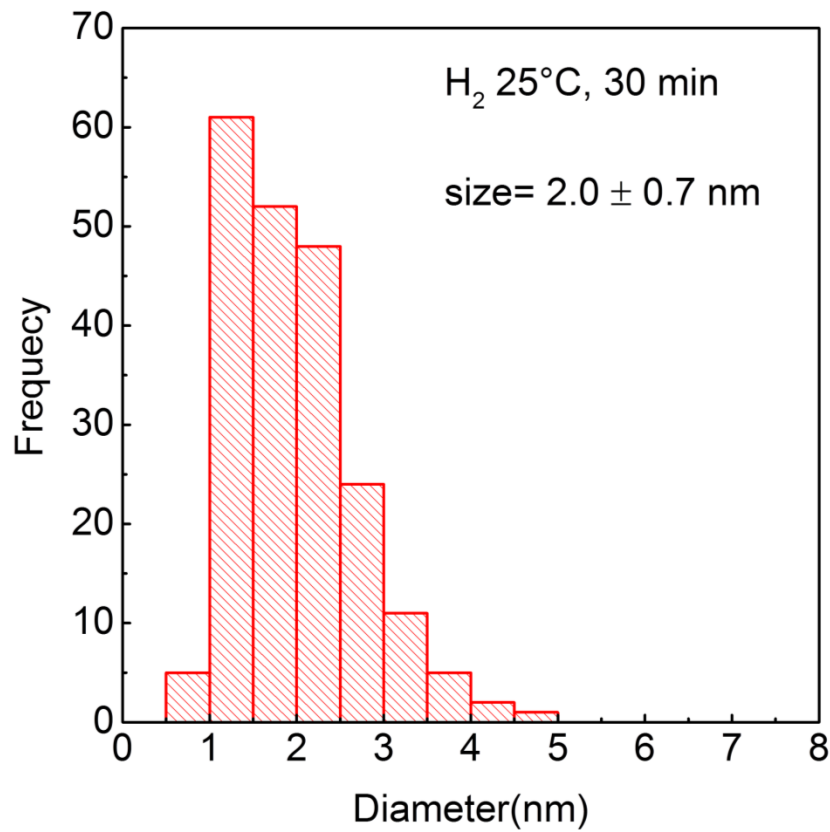
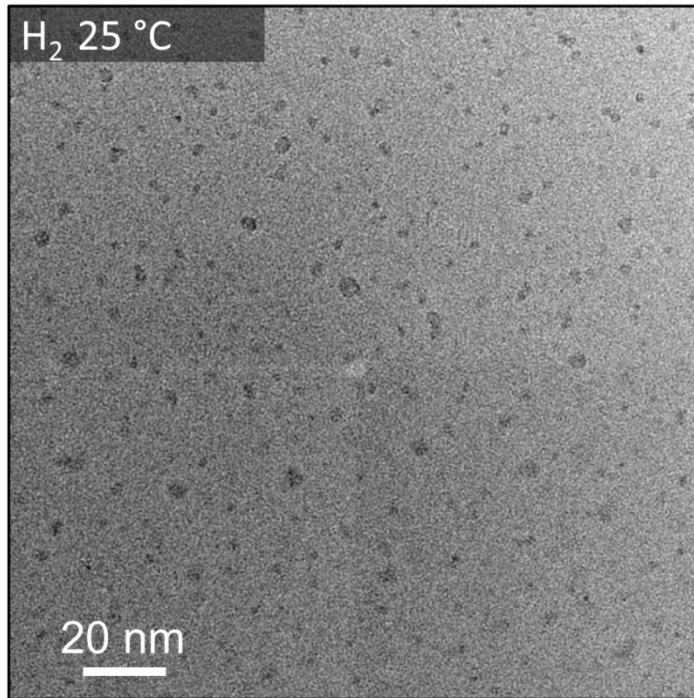
Farzad Behafarid¹, Sudeep Pandey¹, Rosa E. Diaz², Eric A. Stach², Beatriz Roldan Cuenya^{3*}

¹Department of Physics, University of Central Florida, Orlando, FL 32816

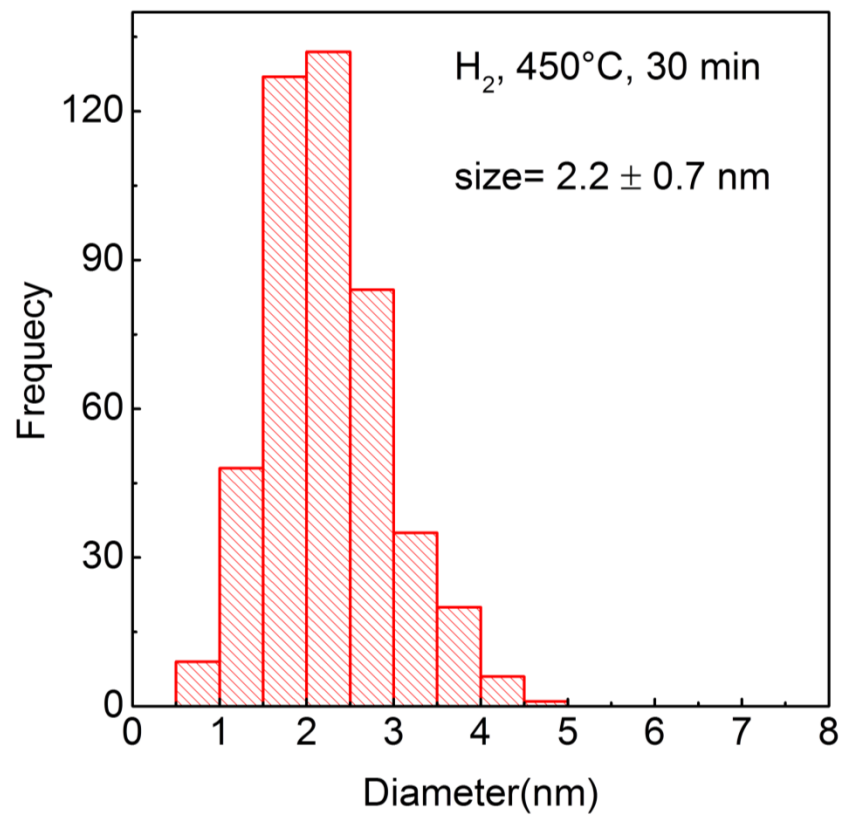
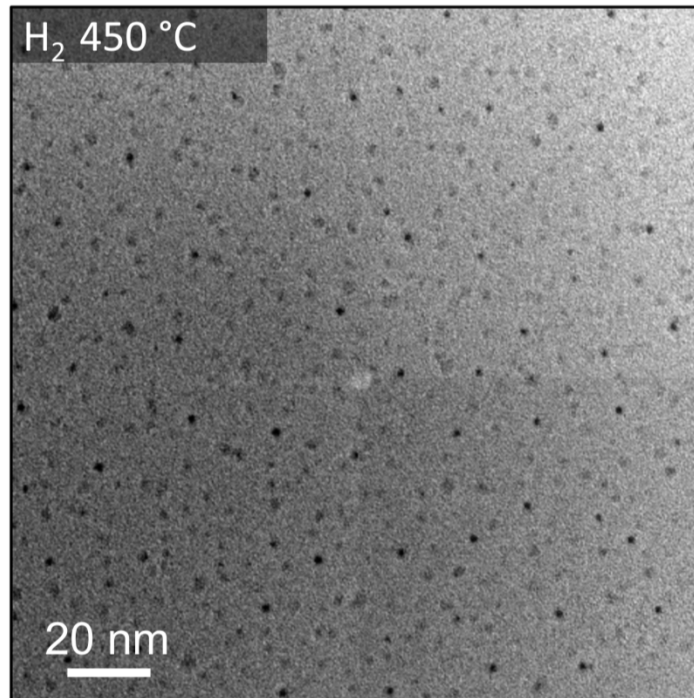
²Center of Functional Nanomaterials, Brookhaven National Laboratory, Upton, NY

³Department of Physics, Ruhr University Bochum, 44780 Bochum, Germany

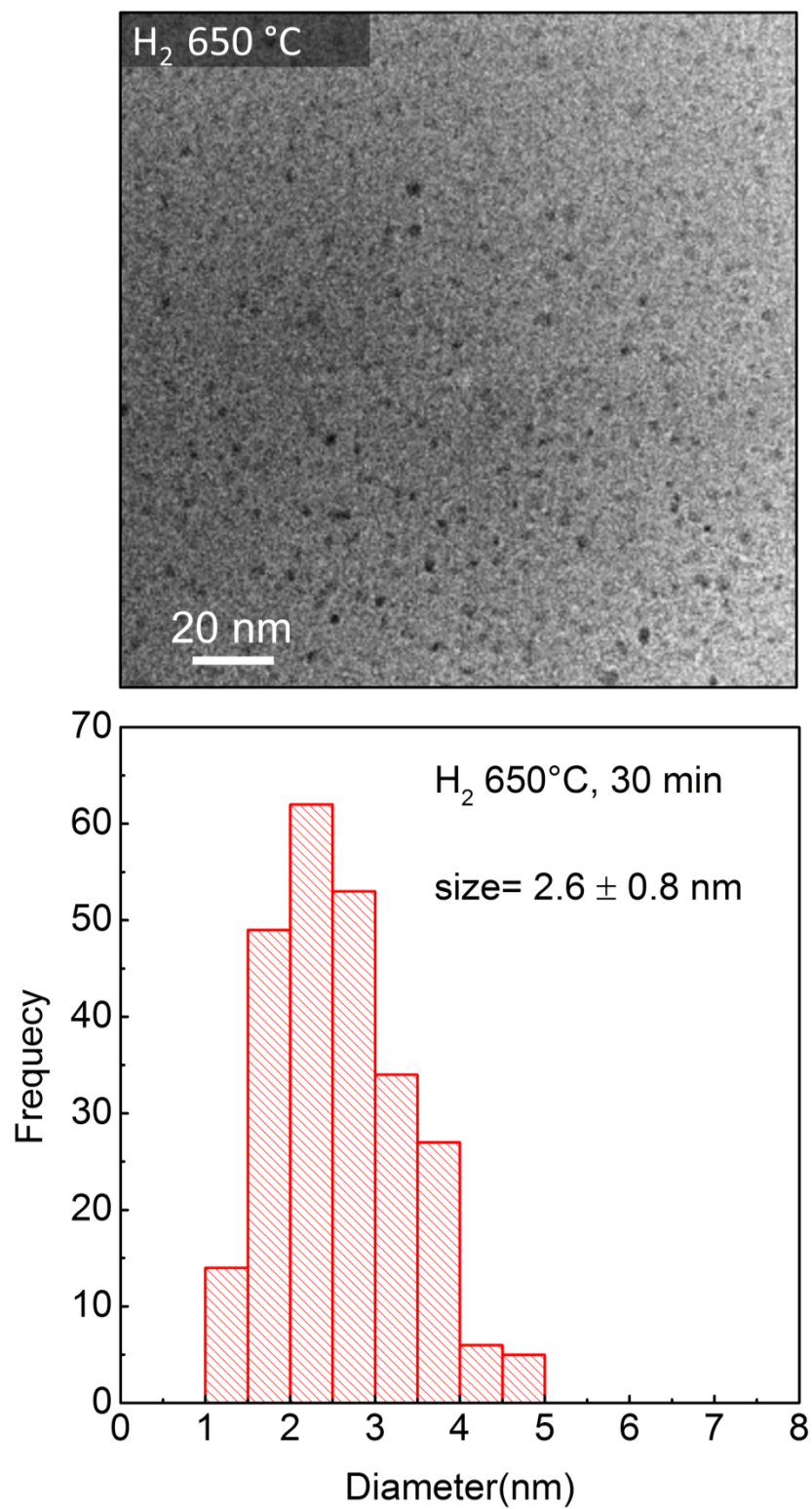
*e-mail: Beatriz.Roldan@rub.de



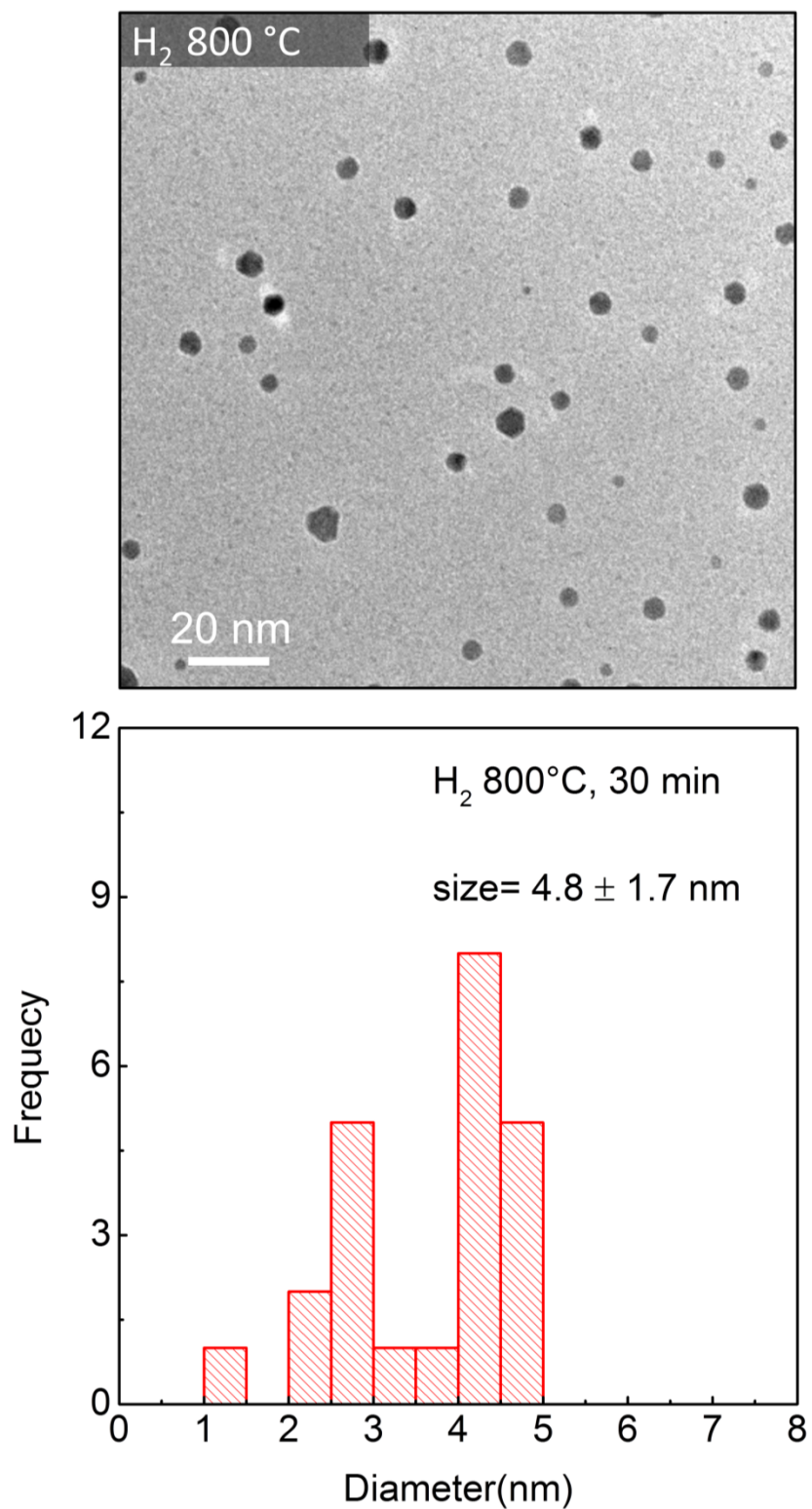
Suppl. Fig. 1: TEM image shown in Fig.1(a) of the main text and the corresponding size histogram.



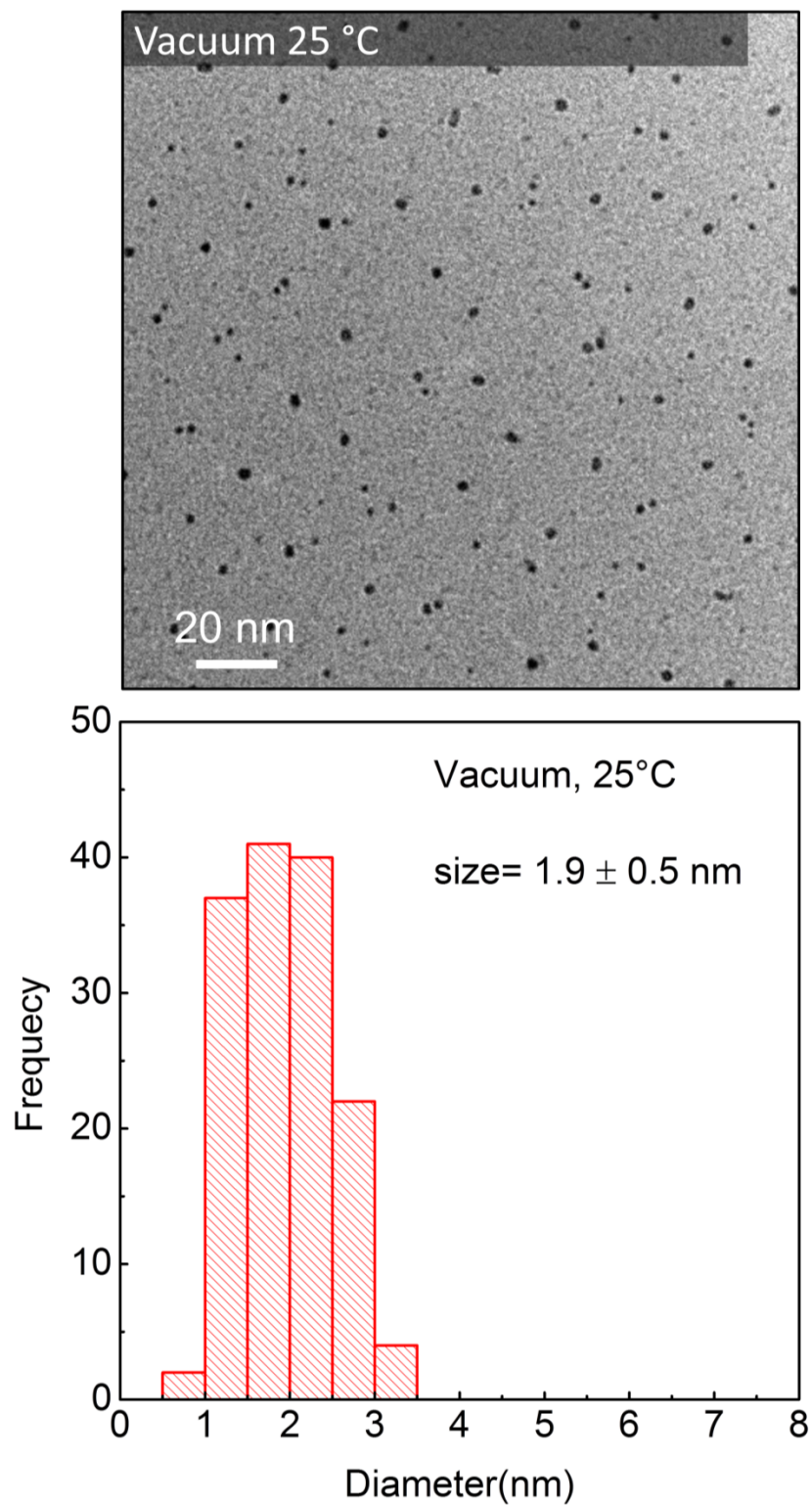
Suppl. Fig. 2: TEM image shown in Fig.1(b) of the main text and the corresponding size histogram.



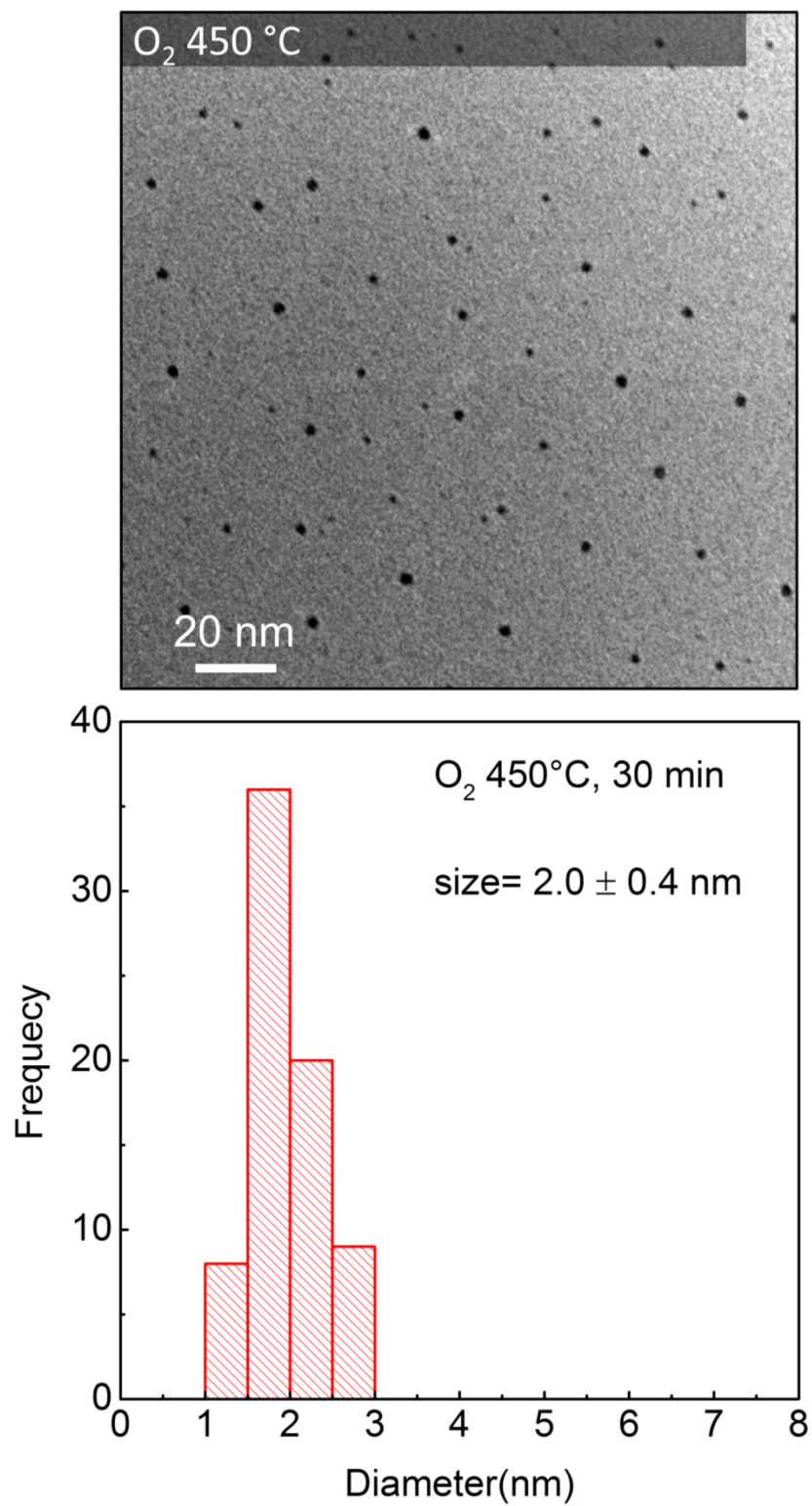
Suppl. Fig. 3: TEM image shown in Fig.1(c) of the main text and the corresponding size histogram.



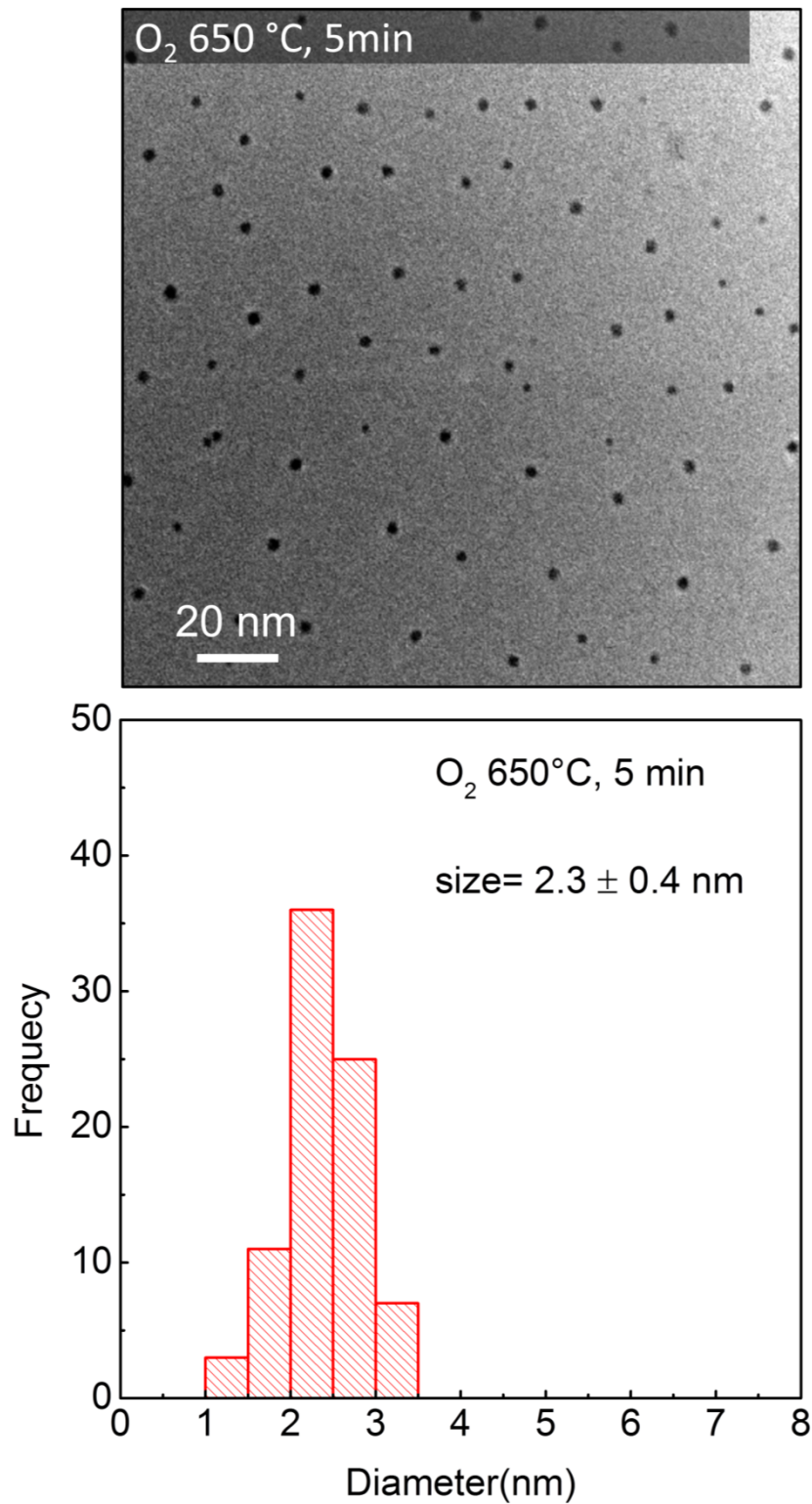
Suppl. Fig. 4: TEM image shown in Fig.1(d) of the main text and the corresponding size histogram.



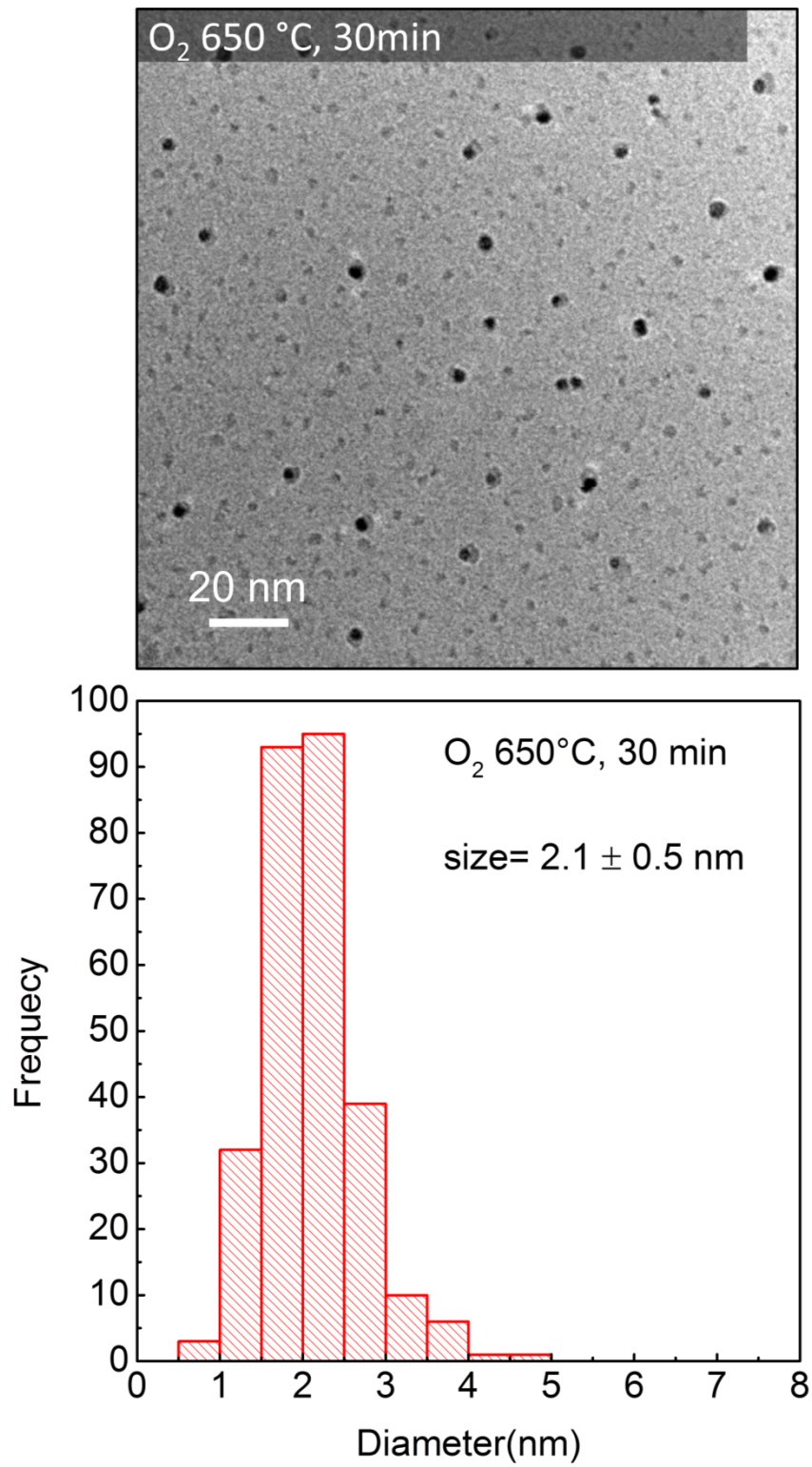
Suppl. Fig. 5: TEM image shown in Fig.2(a) of the main text and the corresponding size histogram.



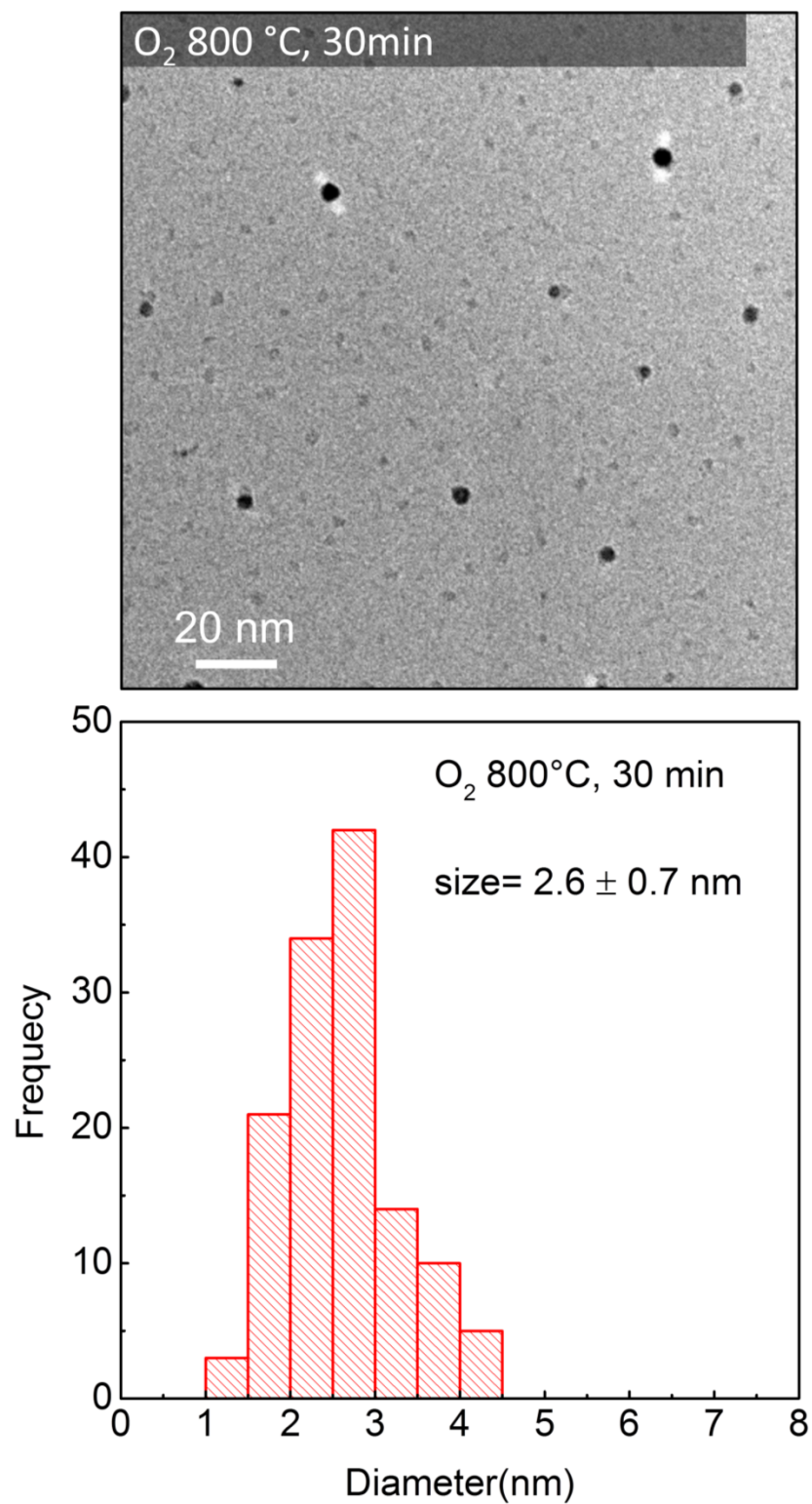
Suppl. Fig. 6: TEM image shown in Fig.2(b) of the main text and the corresponding size histogram.



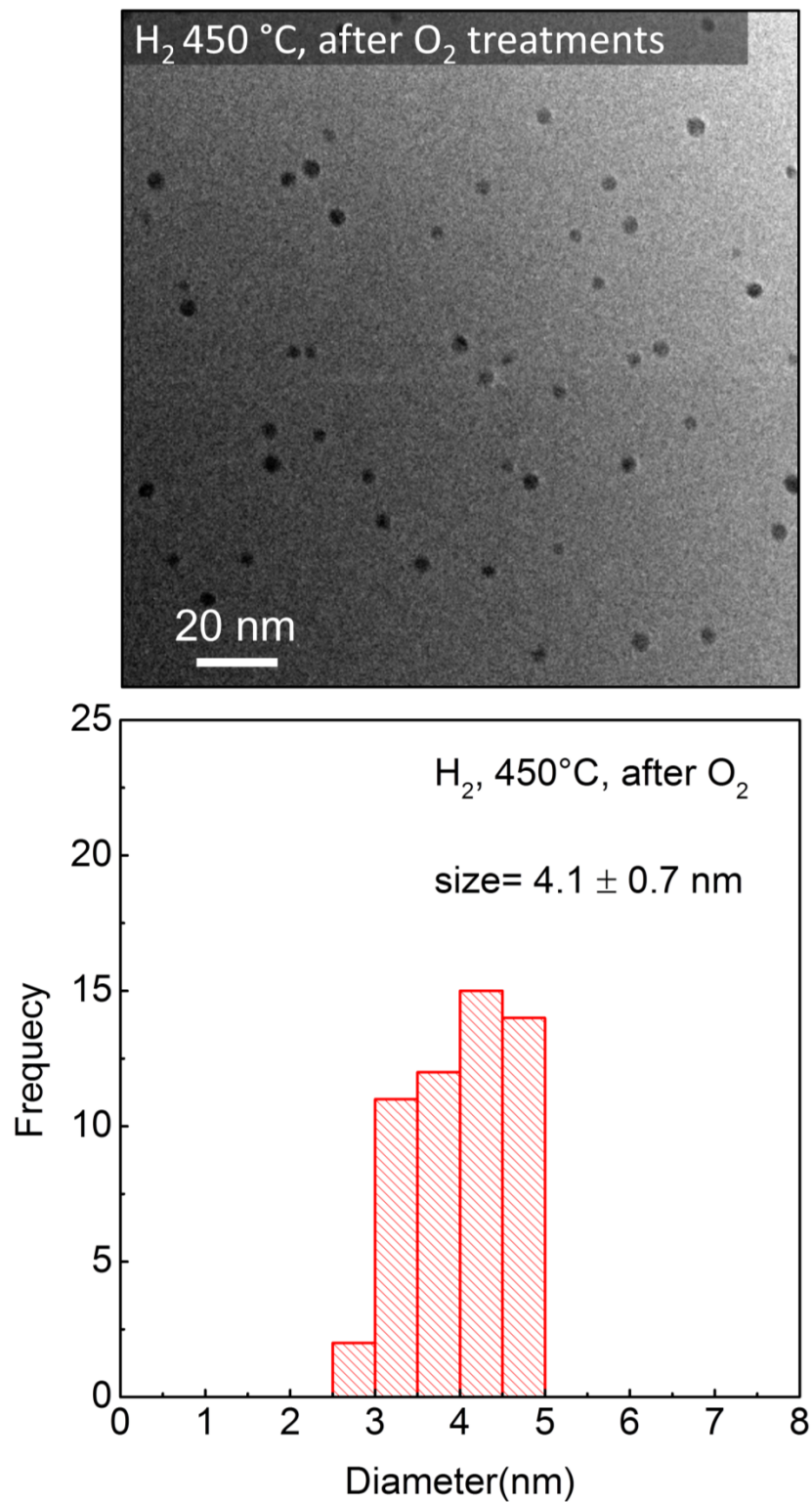
Suppl. Fig. 7: TEM image shown in Fig.2(c) of the main text and the corresponding size histogram.



Suppl. Fig. 8: TEM image shown in Fig.2(d) of the main text and the corresponding size histogram.



Suppl. Fig. 9: TEM image shown in Fig.2(e) of the main text and the corresponding size histogram.



Suppl. Fig. 10: TEM image shown in Fig.2(f) of the main text and the corresponding size histogram.