

LC-MS results

1. Sample preparation

Sample: Shift 1000 μL samples to sample bottle accurately to prepare sampling.

2. Chromatographic conditions

Chromatographic column: ZORBAX Eclipse XDB-C18 5 μm 4.6*150 mm

Volume of sample: 5 μL

Wavelength: 230 nm

Column temperature: 25 $^{\circ}\text{C}$

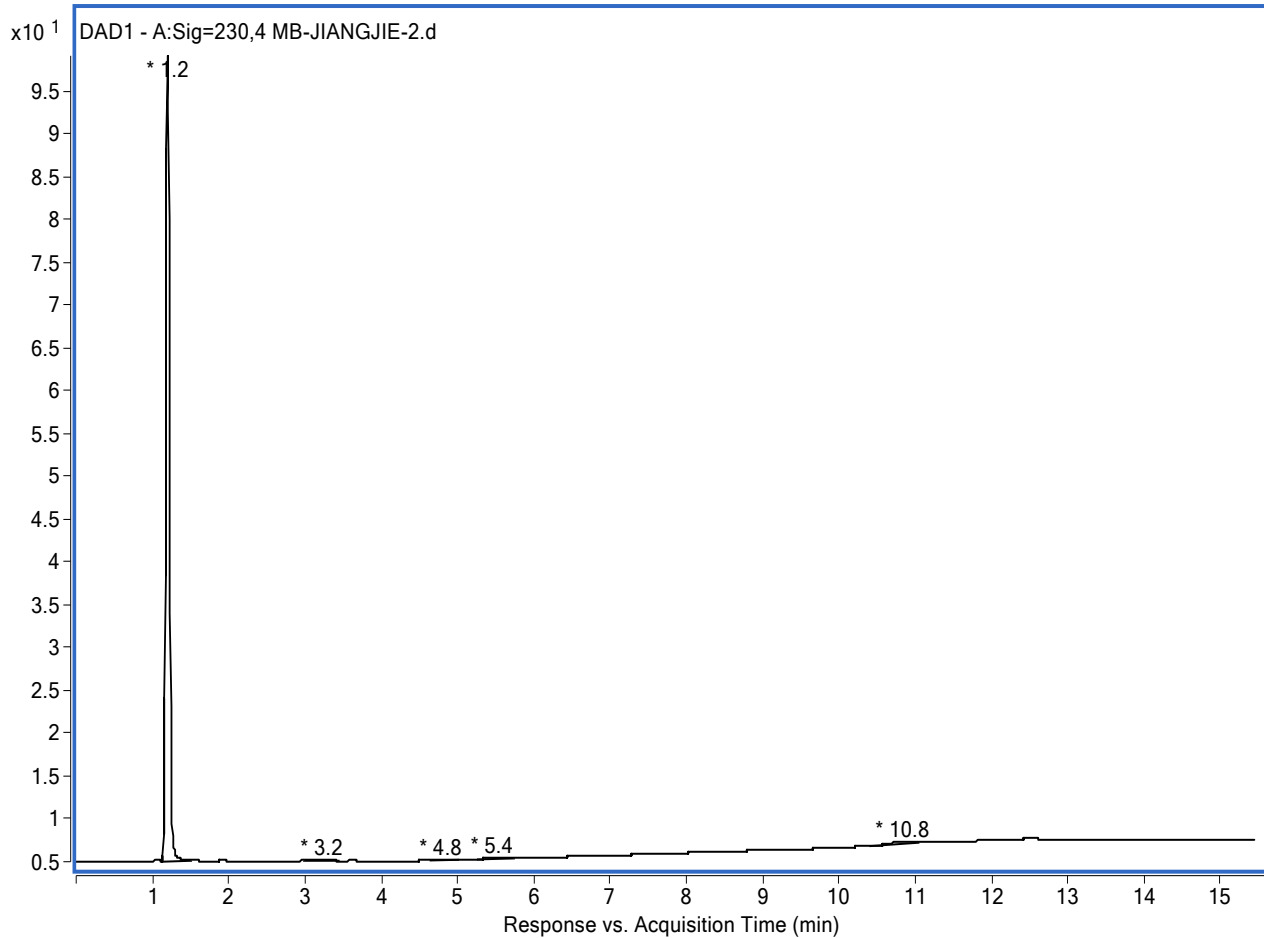
Mobile phase: A: Water B: Acetonitrile

Flow rate: 1.0 mL/min

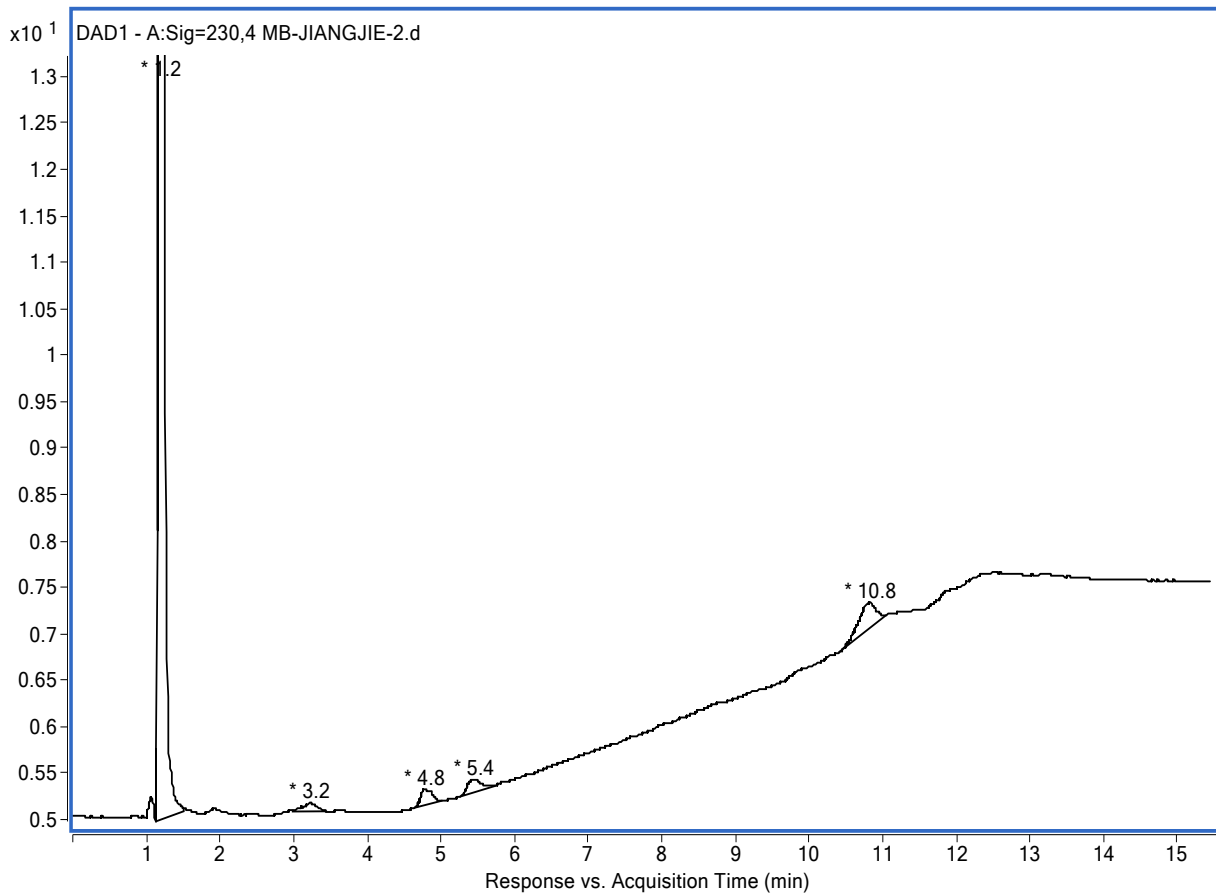
Gradient:

1	50	50
2	50	50
10	10	90
12	10	90
13	50	50
15	50	50

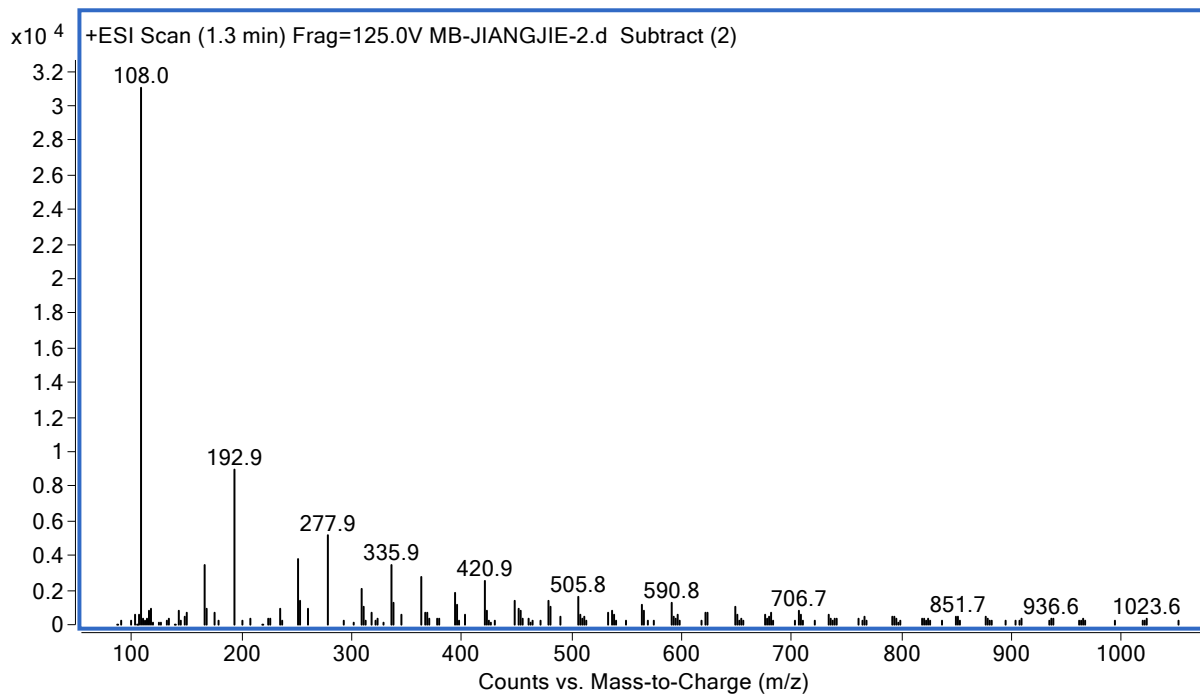
3. Chromatograms and mass spectra



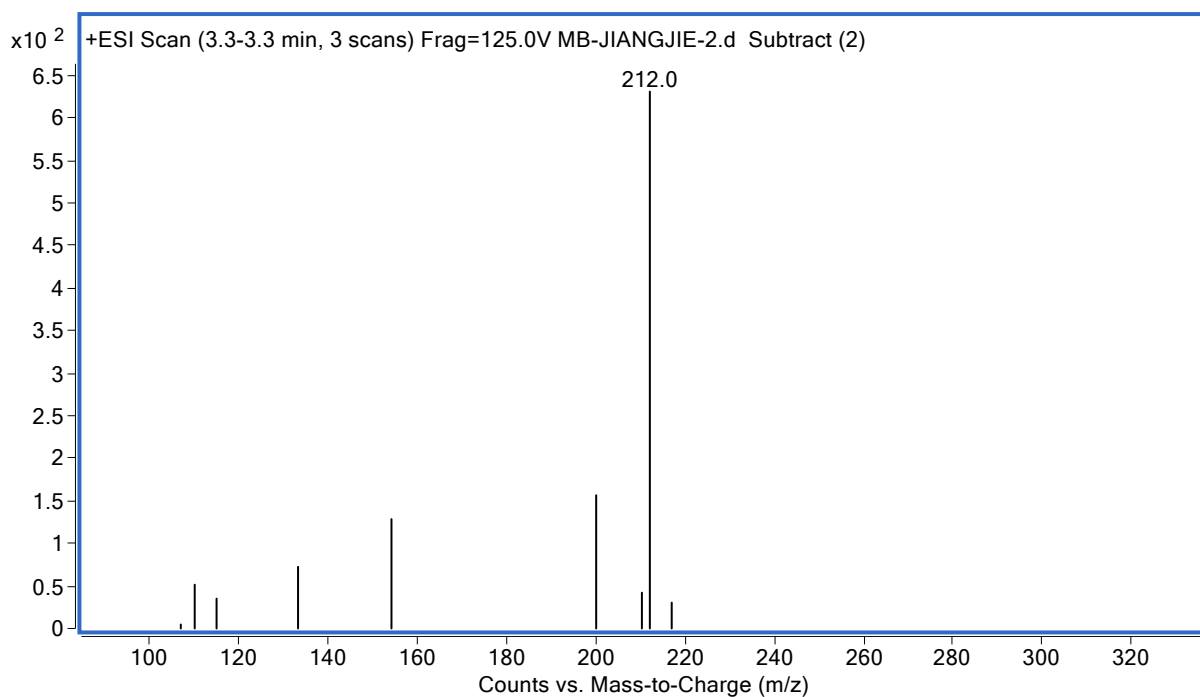
Peak	RT	Area	Height	Area Sum%
1	1.2	321.85	94.09	97.07
2	3.2	1.22	0.09	0.37
3	4.8	1.84	0.17	0.55
4	5.4	1.96	0.14	0.59
5	10.8	4.69	0.27	1.41



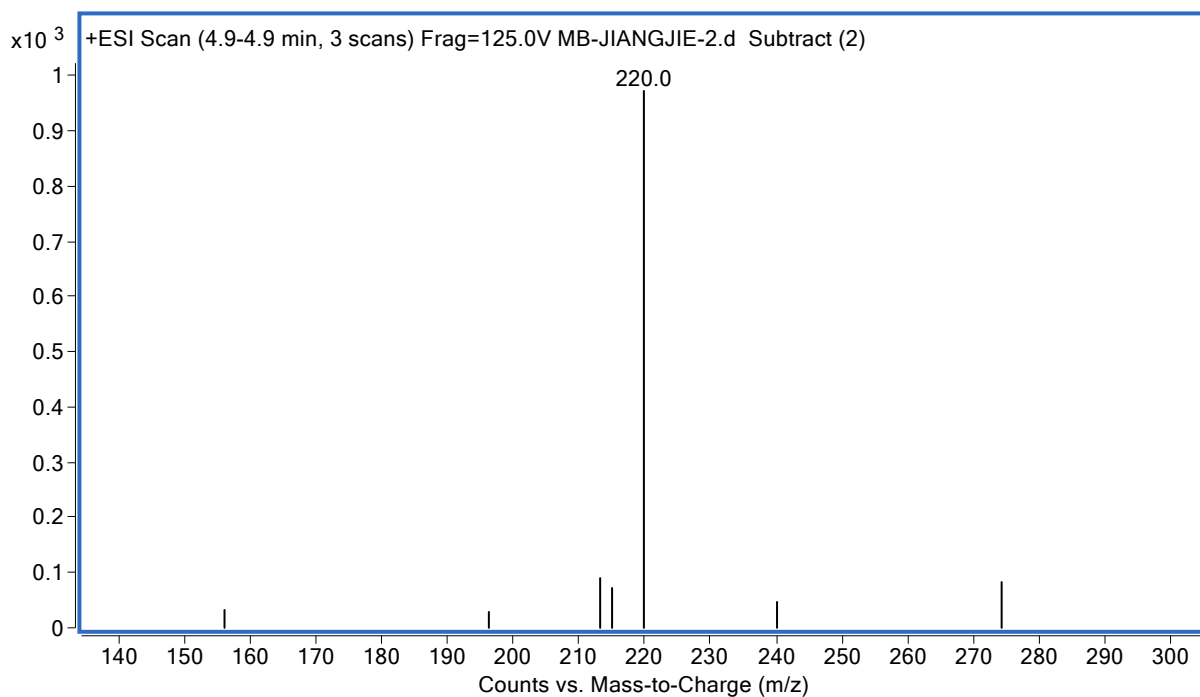
1.2 min



3.2 min



4.8 min



10.8 min

