

Supporting information

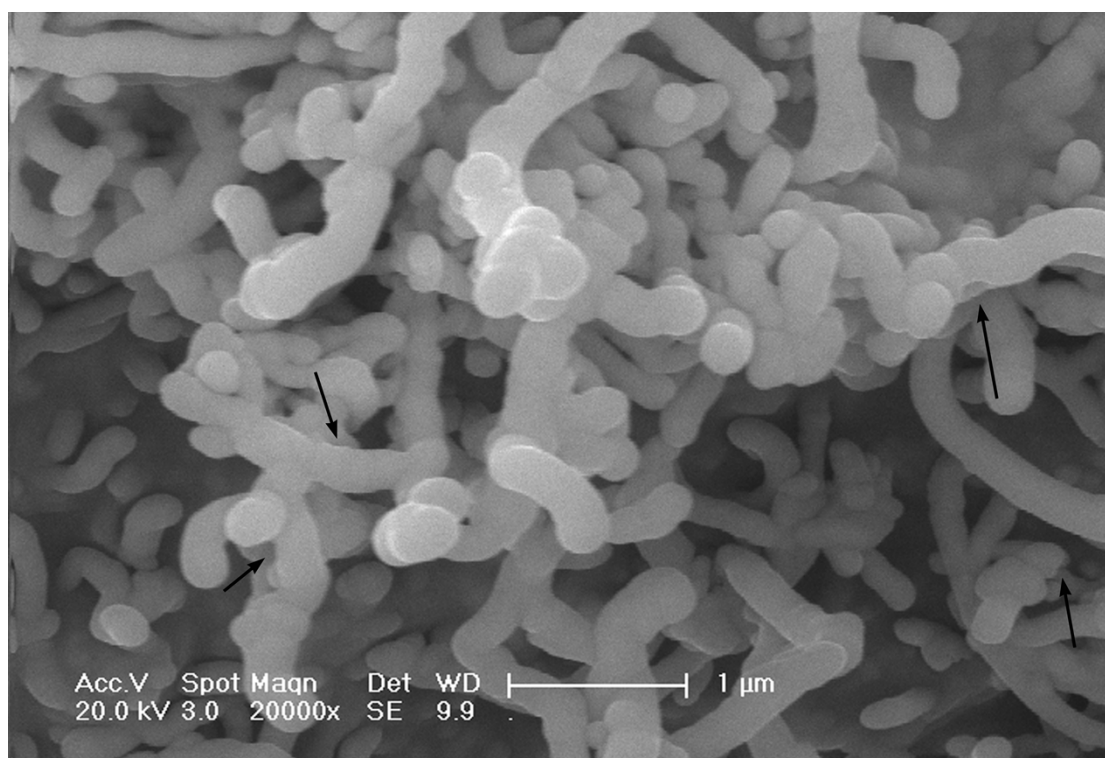
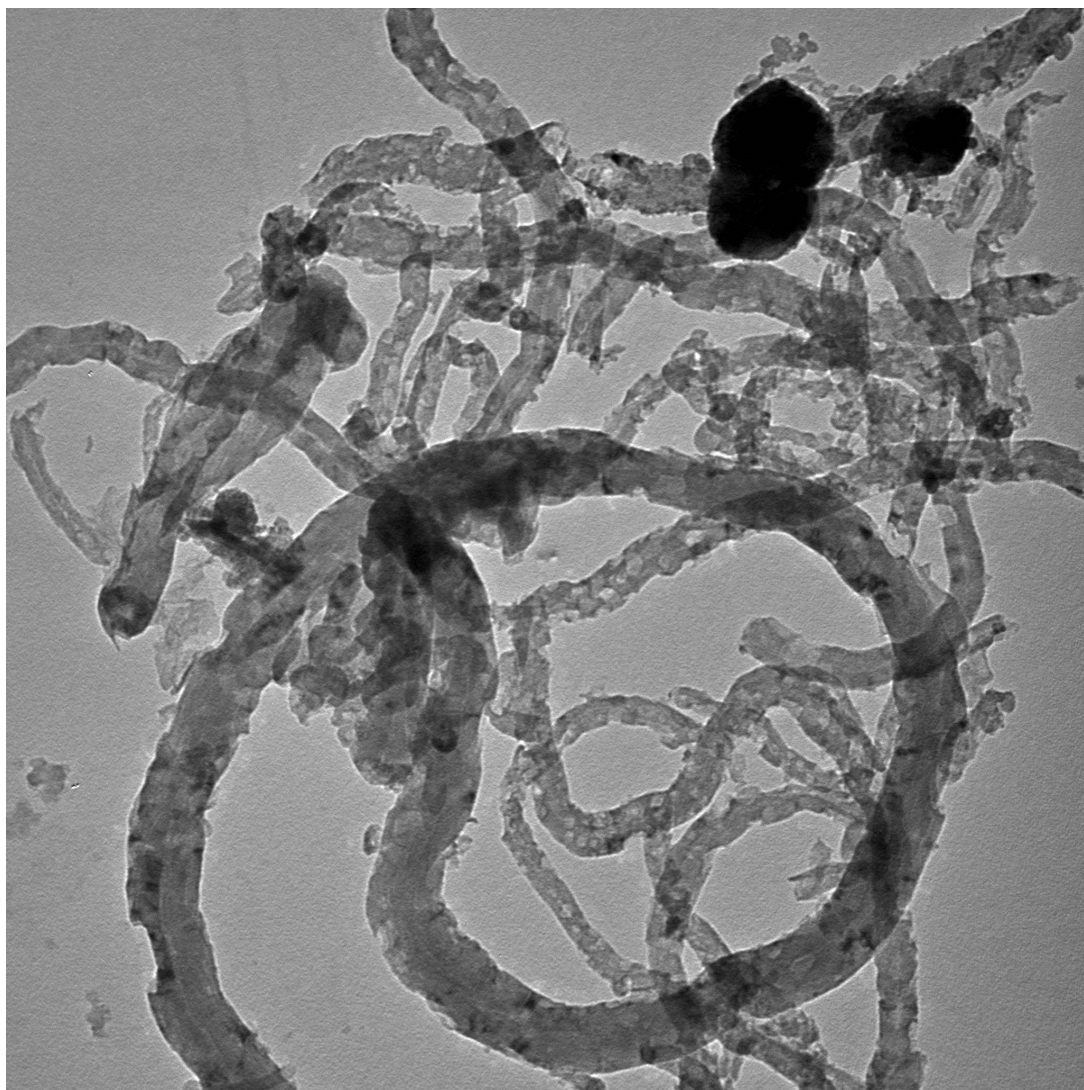

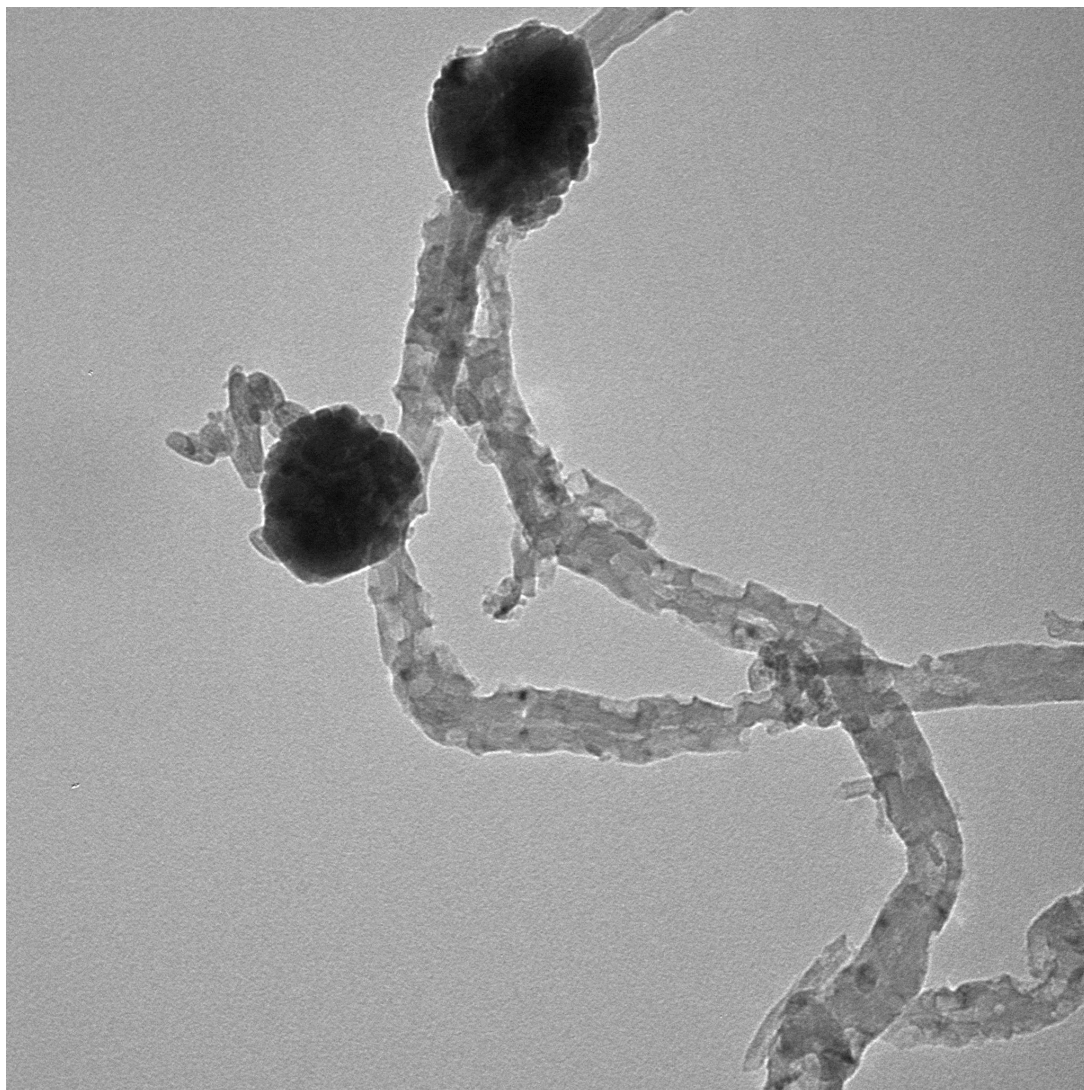


Figure S1. SEM image of PCNTs.

Because the sample was sputtered by Au nanoparticles before SEM measurement, so it is relatively hard to observe the mesopores on PCNTs. As indicated by arrows, there are some mesopores on the surface of PCNTs.



	显微镜	加速电压	放大倍率	相机长度	
JEM-1011	100 kV	100000 x	-		—200 nm—



显微镜	加速电压	放大倍率	相机长度	
JEM-1011	100 kV	150000 x	-	——200 nm——