

## Supporting Information

# Special Adhesion of the Natural Honeycomb Walls and Their Application

Tianqi Guo,<sup>†</sup> Muchen Li,<sup>†</sup> Liping Heng,<sup>\*</sup> and Lei Jiang

School of Chemistry and Environment, Beihang University, 100191 China. Email:  
henglp@iccas.ac.cn.

<sup>†</sup> These authors contributed equally to this work

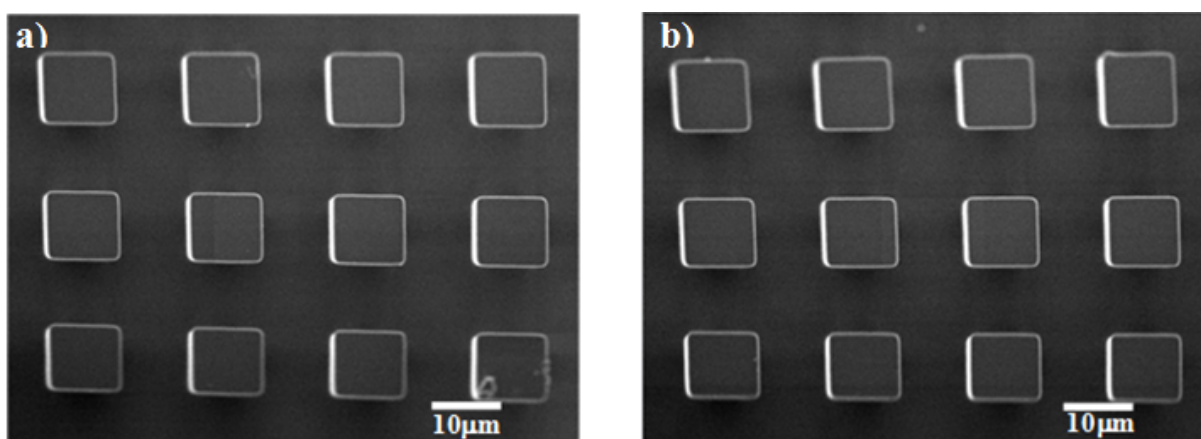


Figure S1. SEM images of the surface of the superhydrophobic (a) and superhydrophilic (b) square-pillar-structured silicon substrates.