

Supporting Information

Carbon mediated photoinduced reactions as a key factor in the photocatalytic performance of C/TiO₂

Marta Haro, Leticia F. Velasco, Conchi O. Ania*

Instituto Nacional del Carbón, INCAR-CSIC, Apdo. 73, 33080 Oviedo, Spain

E-mail: conchi.ania@incar.csic.es

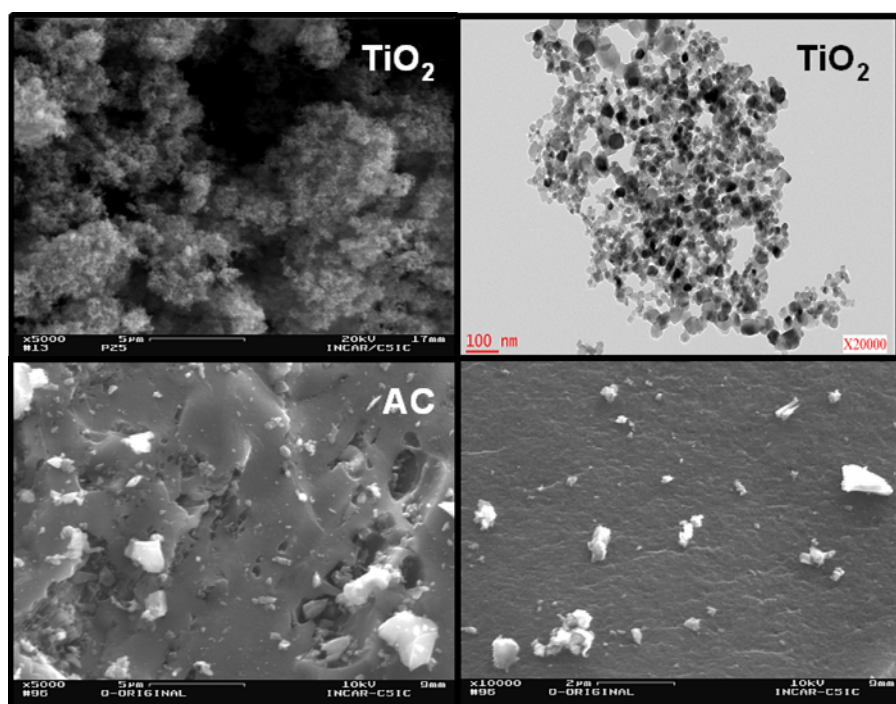


Figure S1. TEM (top right) and SEM images of the materials (activated carbon and TiO₂) used for the preparation of the composites.

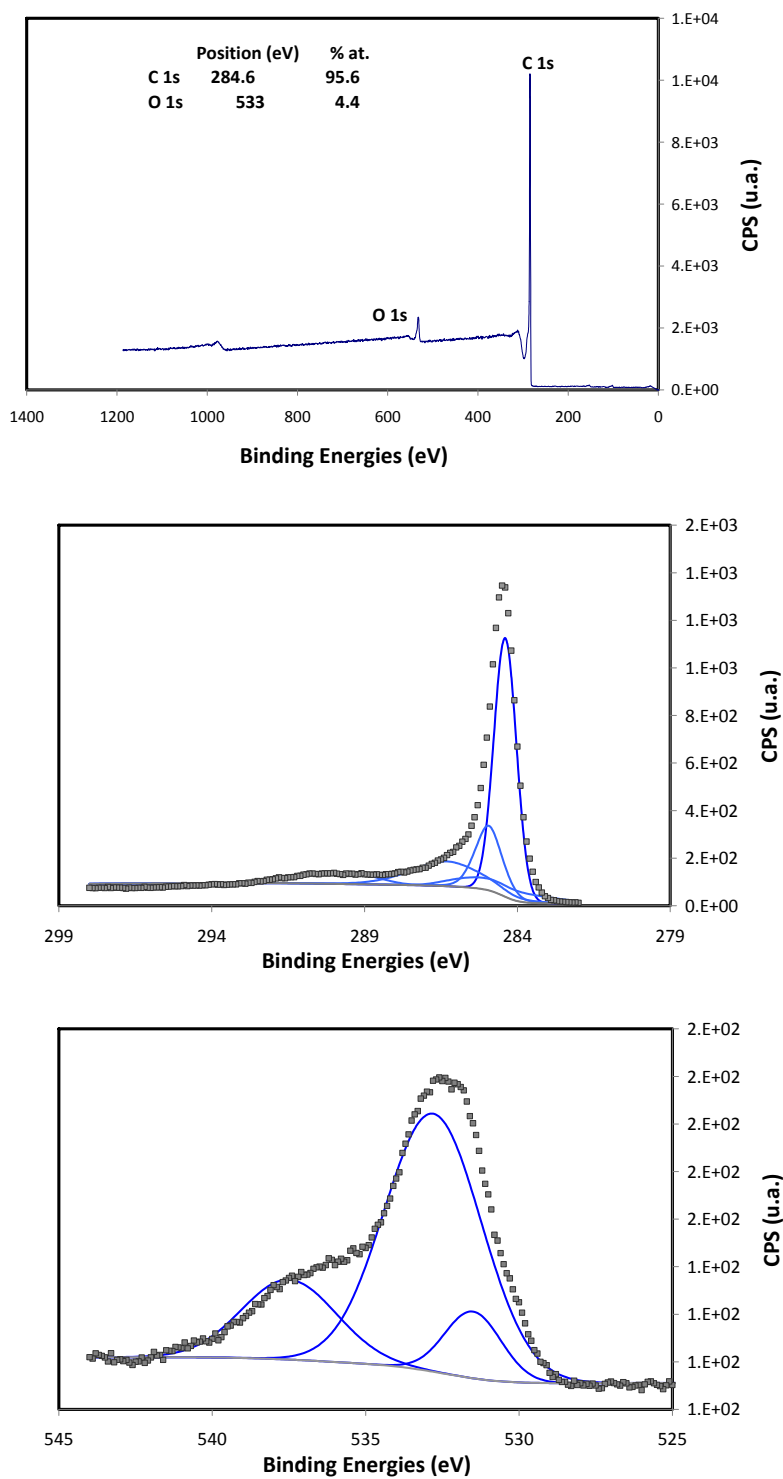


Figure S2. XPS data of the activated carbon used as support. A) wide scan; B) C1s and C) O1s signals, showing deconvolution of main components.

Figure S3. Images obtained at the confocal optical microscope of the film electrodes. Dark areas indicate the presence of thicker regions (islands) upon incorporation of the carbon additive.

