

Supporting Information for

Catalytic conversion of syngas to mixed alcohols over CuFe-based catalysts derived from layered double hydroxides

Wa Gao, Yufei Zhao, Junmin Liu, Qianwen Huang, Shan He, Changming Li, Jingwen Zhao
and Min Wei*

*State Key Laboratory of Chemical Resource Engineering, Beijing University of Chemical
Technology, Beijing 100029, P. R. China*

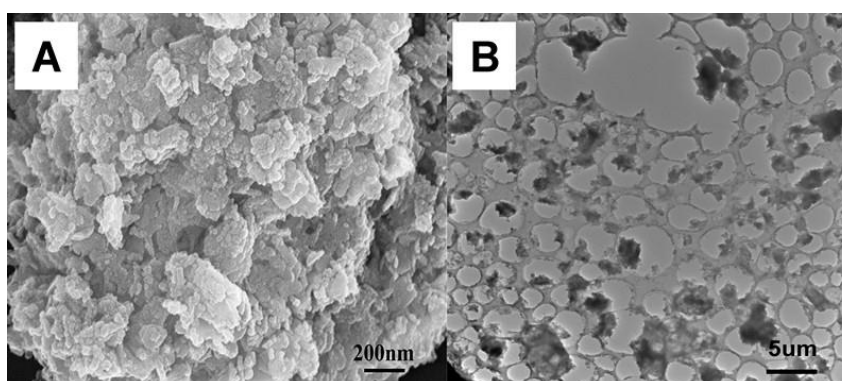


Fig. S1 SEM (A) and TEM (B) image of the CP-CuFeMg-LDH precursor.

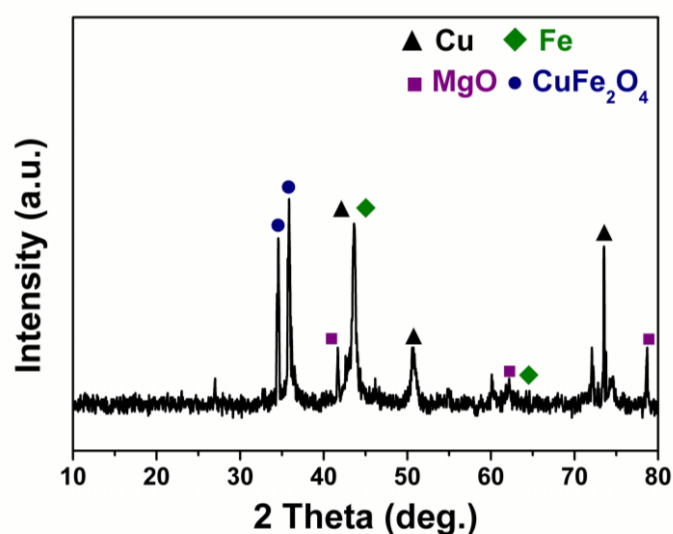


Fig. S2 XRD pattern of the used S₂-CuFeMg-Cat after reaction at 573 K for 48 h.

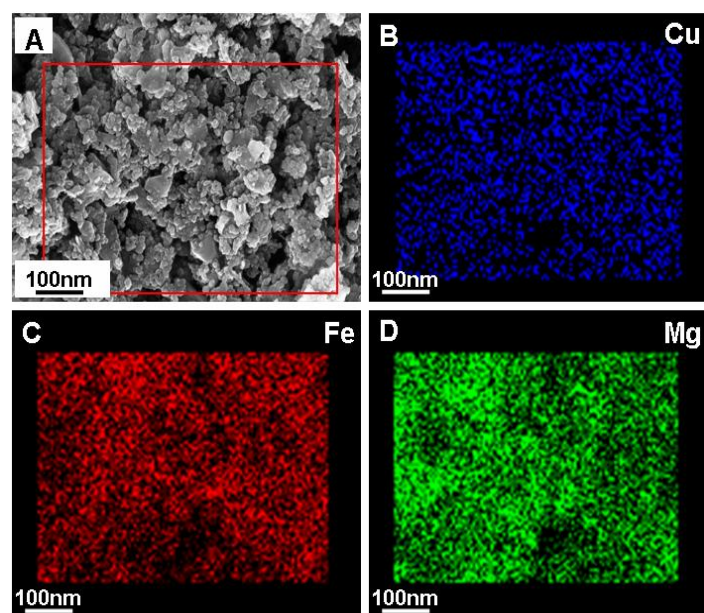


Fig. S3 (A) SEM image, (B), (C), (D) SEM-EDX mapping of the used S_2 -CuFeMg-Cat after reaction at 573 K for 48 h.

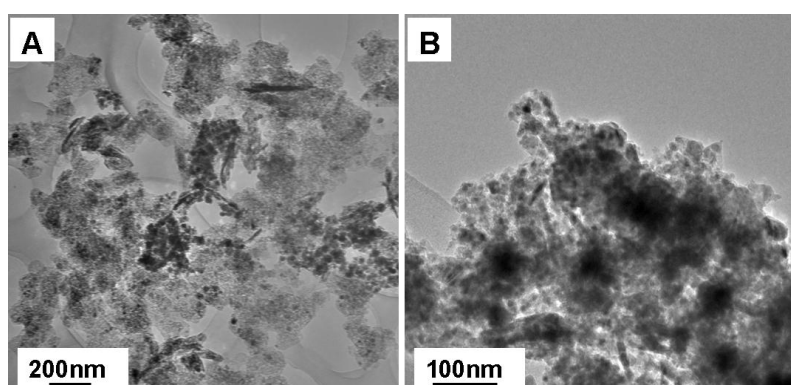


Fig. S4 HRTEM images of the used S_2 -CuFeMg-Cat after reaction at 573 K for 48 h.