

Supplementary Information for

Chromium(III) amine-bis(phenolate) complexes as catalysts for copolymerization of cyclohexene oxide and CO₂

Hua Chen,^a Louise N. Dawe,^{a,b} and Christopher M. Kozak*^a

^aDepartment of Chemistry, Memorial University of Newfoundland, St. John's, Newfoundland, A1B 3X7, Canada. E-mail: ckozak@mun.ca; Tel: +1-709-864-8082

^bC-CART X-ray Diffraction Laboratory, Department of Chemistry, Memorial University of Newfoundland, St. John's, Newfoundland, A1B 3X7, Canada. Current address: Department of Chemistry, Wilfrid Laurier University, 75 University Ave. W. Waterloo, Ontario, N2L 3C5, Canada

Table S1: Crystallographic and Structure Refinement Data for (1)₂·LiCl·THF.

Chemical formula	C ₇₈ H ₁₁₀ Cl ₃ Cr ₂ LiN ₂ O ₅ ·2(C ₇ H ₈)
Colour	Green
Habit	Prism
Formula mass	1557.24
Crystal system	Trigonal
<i>a</i> , <i>b</i> , <i>c</i> [Å]	18.945(9), 18.945(9), 25.390(13)
<i>α</i> , <i>β</i> , <i>γ</i> [°]	90.00, 90.00, 120.00
Unit cell <i>V</i> [Å ³]	7892(7)
Temperature [K]	123(2)
Space group	P3 ₁ 2 1 (#152)
<i>Z</i>	3
<i>D_c</i> /g cm ⁻³	0.983
Radiation type	MoKα
Absorption, <i>μ</i> [cm ⁻¹]	3.24
<i>F</i> (000)	2502
Reflections measured	73179
Independent refl's	7780
<i>R_{int}</i>	0.1281
<i>R₁</i> , <i>wR</i> (<i>F</i> ²) (<i>all</i>) ^[a]	0.1351, 0.3327
<i>R₁</i> , <i>wR</i> (<i>F</i> ²) (<i>I</i> > 2σ(<i>I</i>)) ^[b]	0.1211, 0.3154
Goodness of fit on <i>F</i> ²	1.187
CCDC Ref no.	974612

[a] $R_1 = \Sigma(|F_o| - |F_c|) / \Sigma|F_o|$. [b] $wR_2 = [\Sigma(w(F_o^2 - F_c^2)^2) / \Sigma w(F_o^2)^2]^{1/2}$.

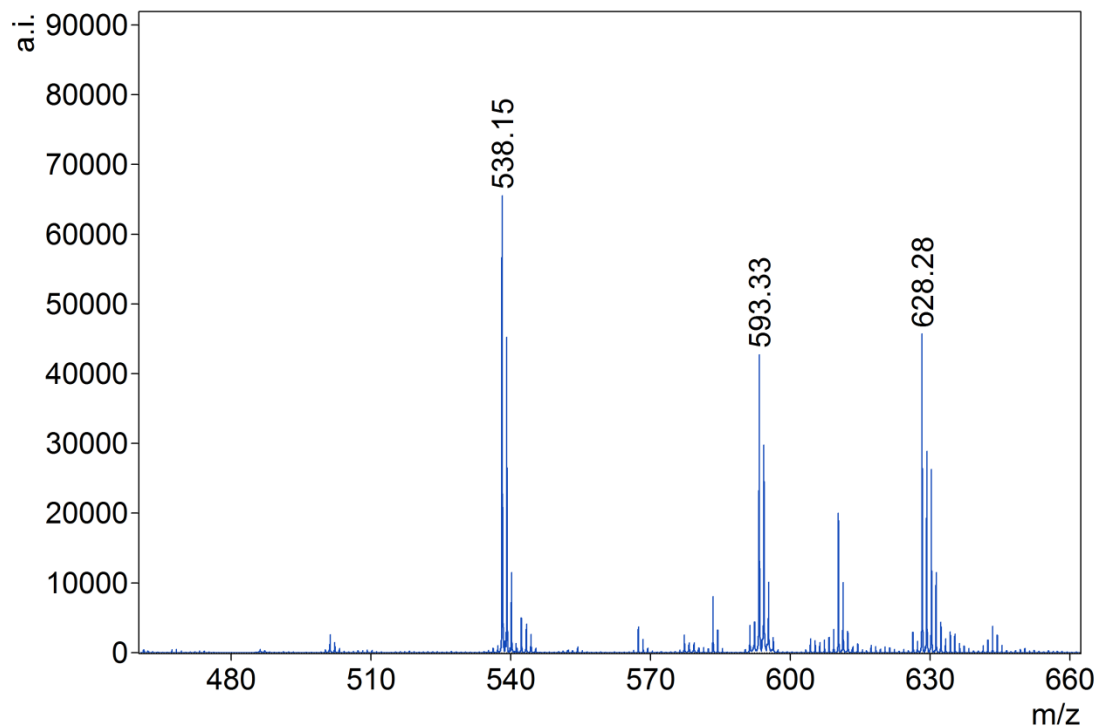


Figure S1. MALDI-TOF mass spectrum (lower mass region) of **1**.

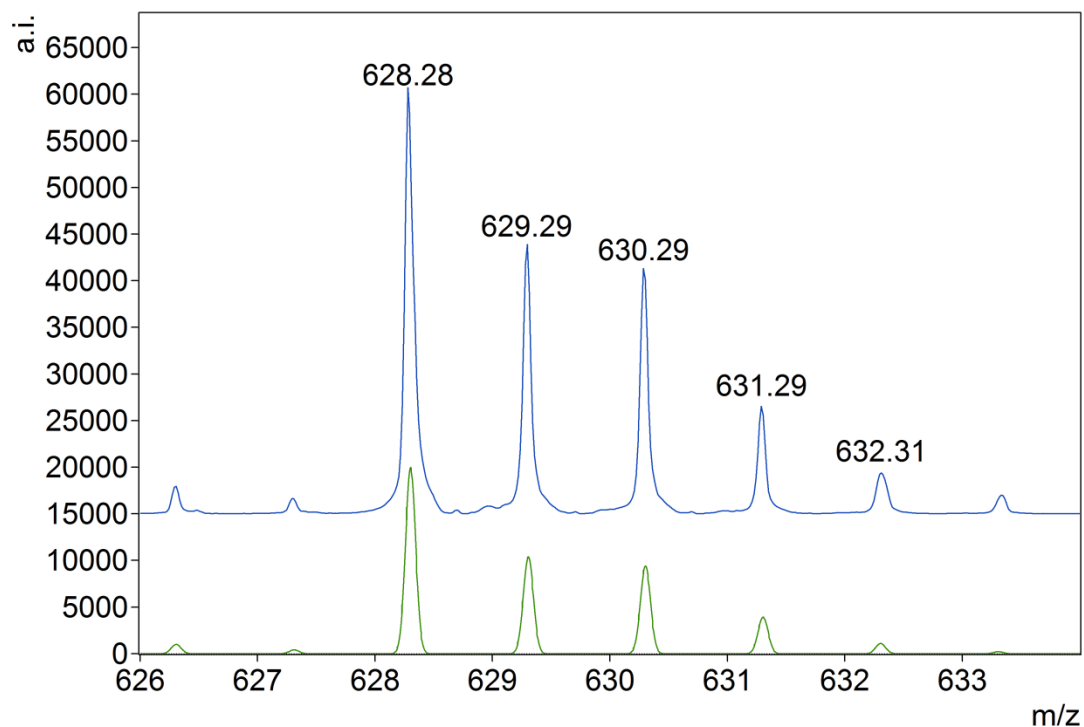


Figure S2. Experimental (upper) and theoretical (lower) MALDI-TOF isotopic distribution pattern for the $[M]^+$ peak of **1**.

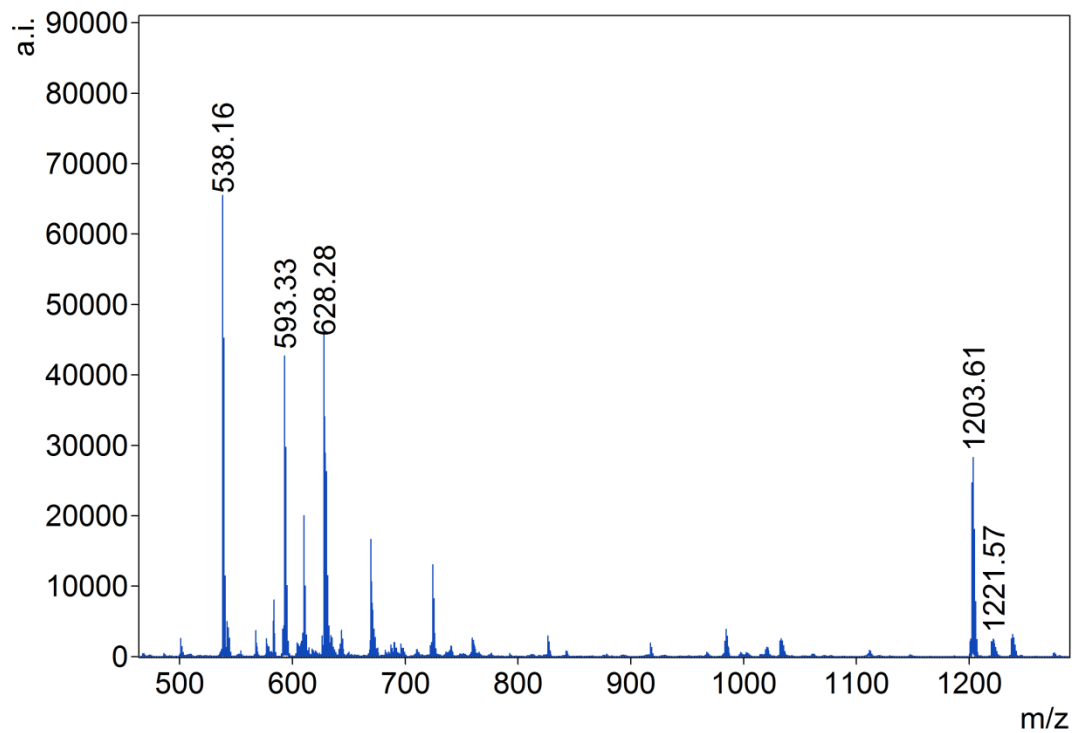


Figure S3. MALDI-TOF mass spectrum of **1** showing the higher mass region.

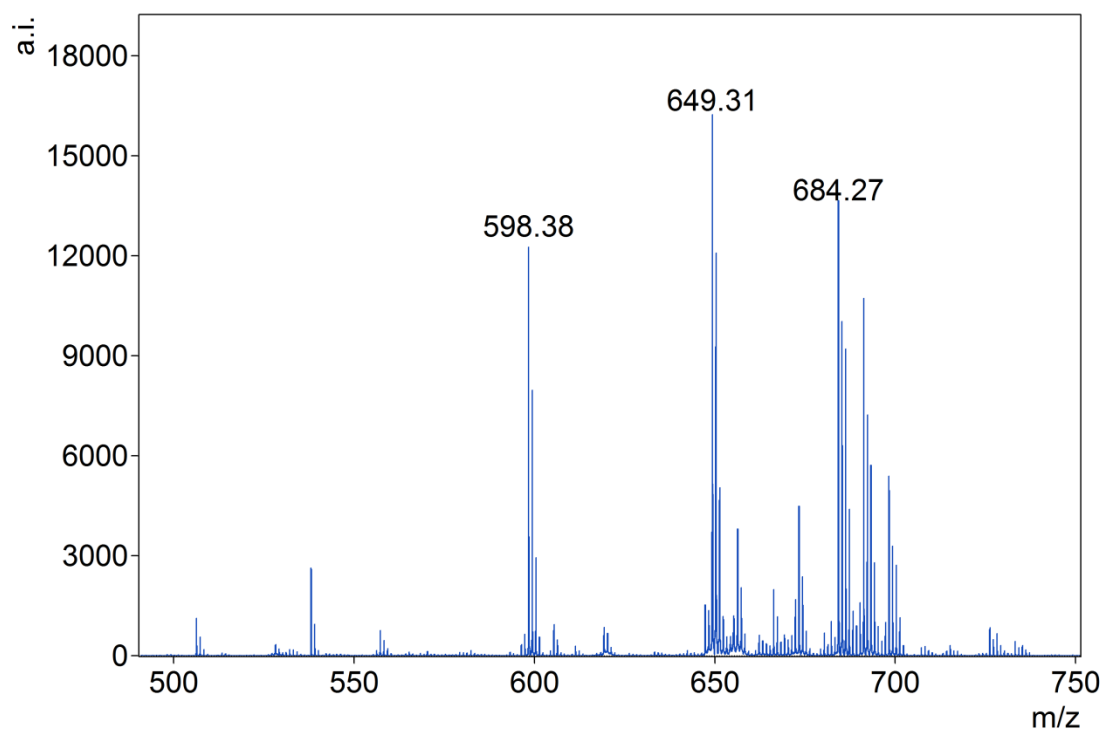


Figure S4. MALDI-TOF mass spectrum (lower mass region) of **2**.

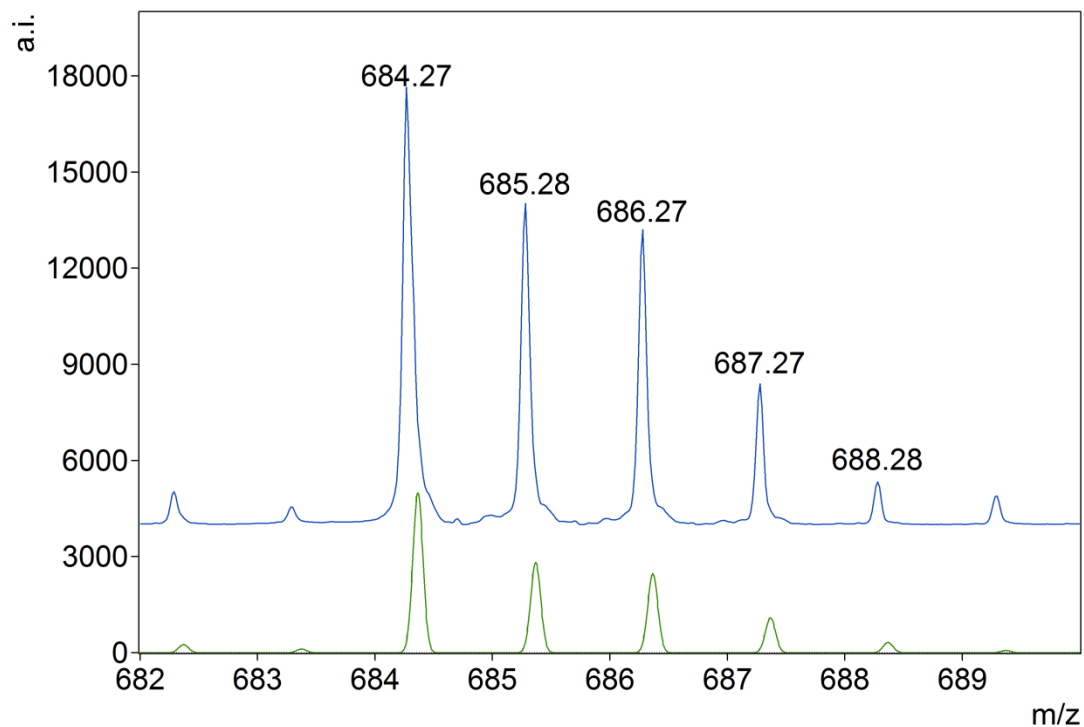


Figure S5. Experimental (upper) and theoretical (lower) MALDI-TOF isotopic distribution pattern for the molecular ion of the $[M]^+$ peak of **2**.

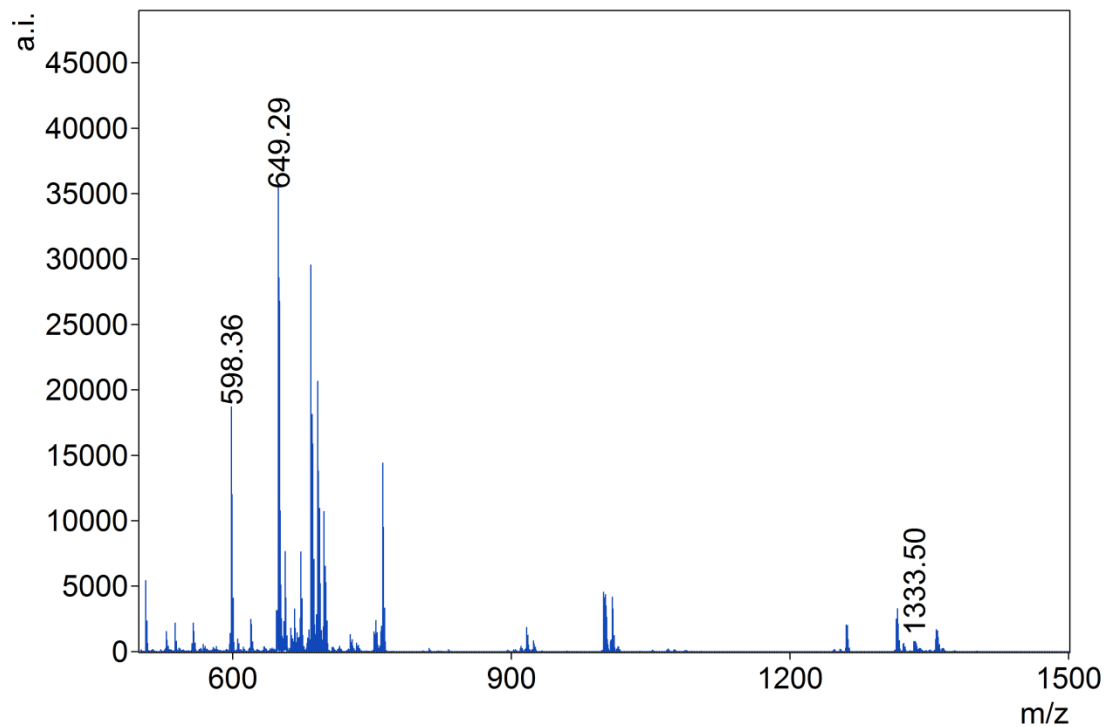


Figure S6. MALDI-TOF mass spectrum of **2** showing the higher mass region.

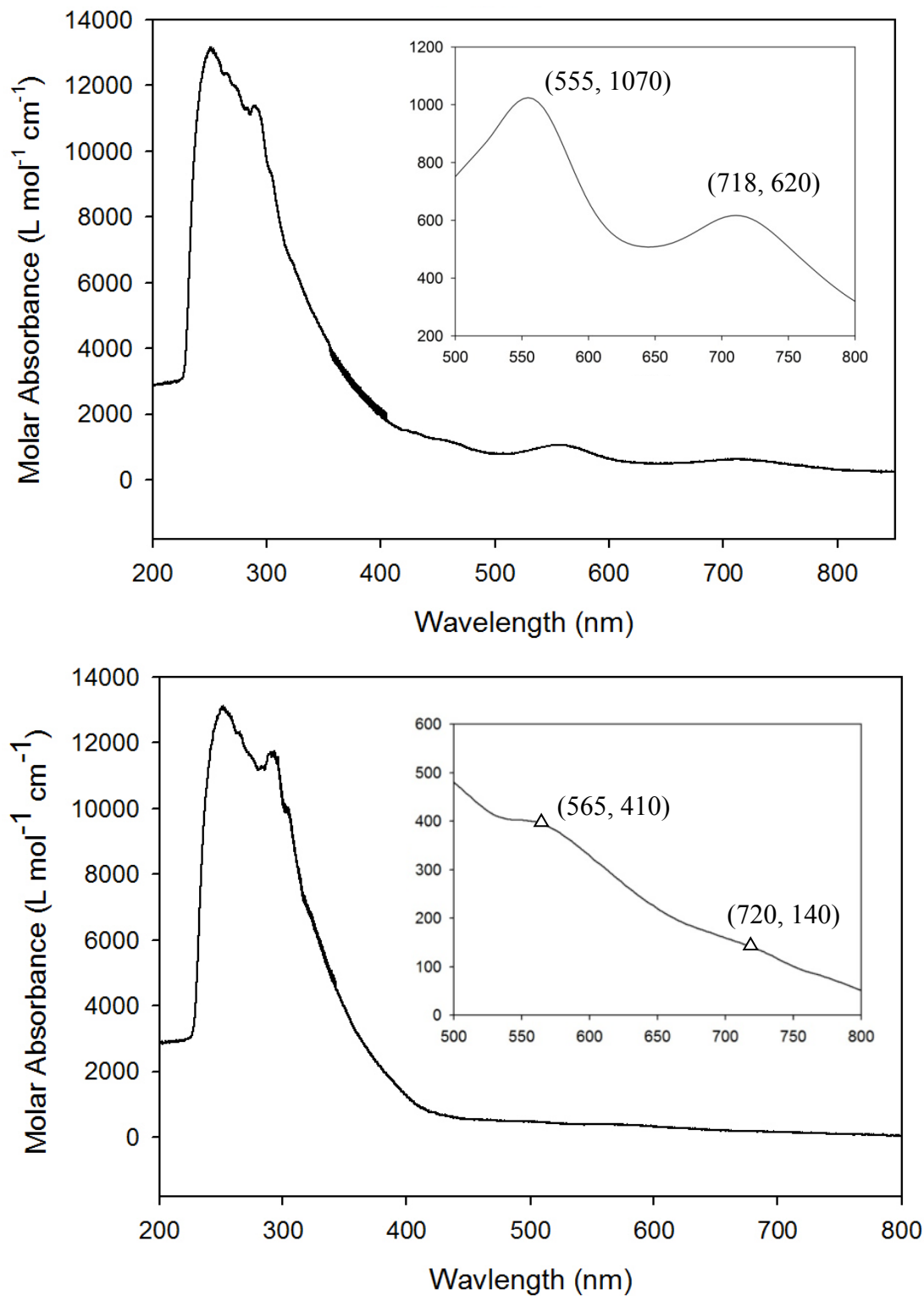


Figure S7. UV-Vis absorption spectrum of **1** (top) and **2** (bottom) in CH₂Cl₂. Insets: Expansions of visible regions showing peak wavelength and molar extinction coefficients.

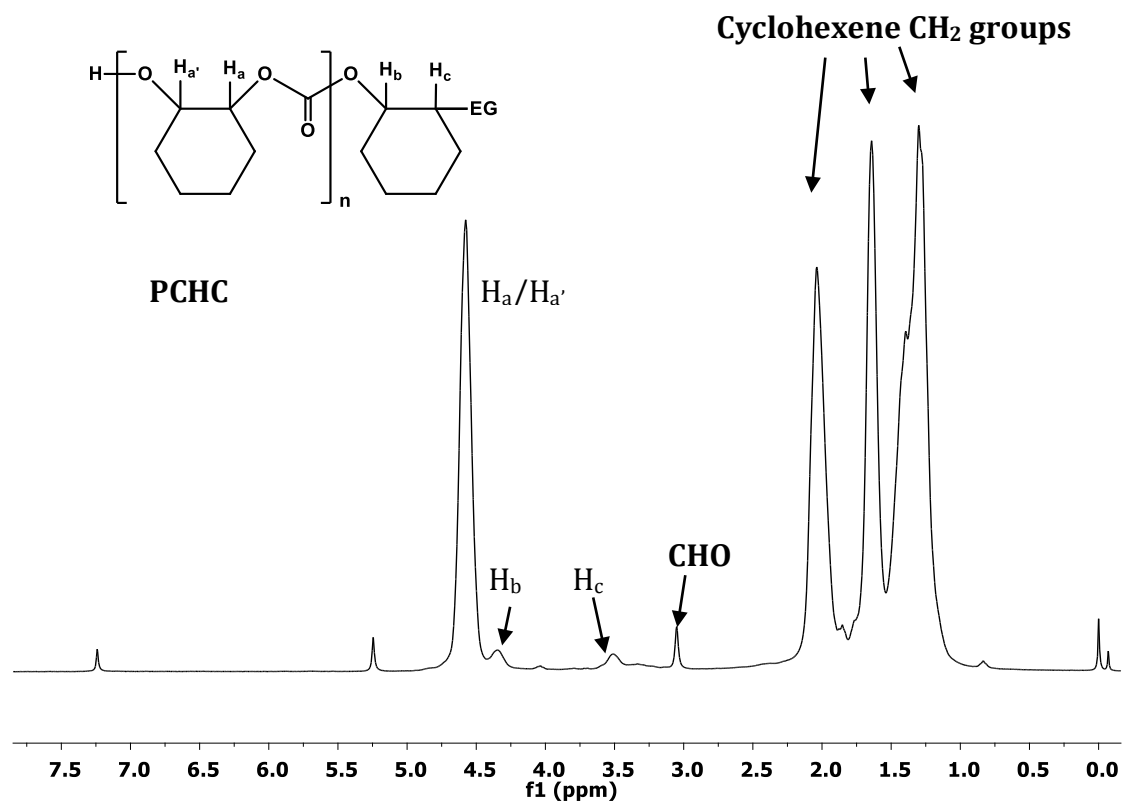


Figure S8. Typical ¹H NMR spectrum of PCHC in CDCl₃ (Table 2, entry 1), EG = end group.

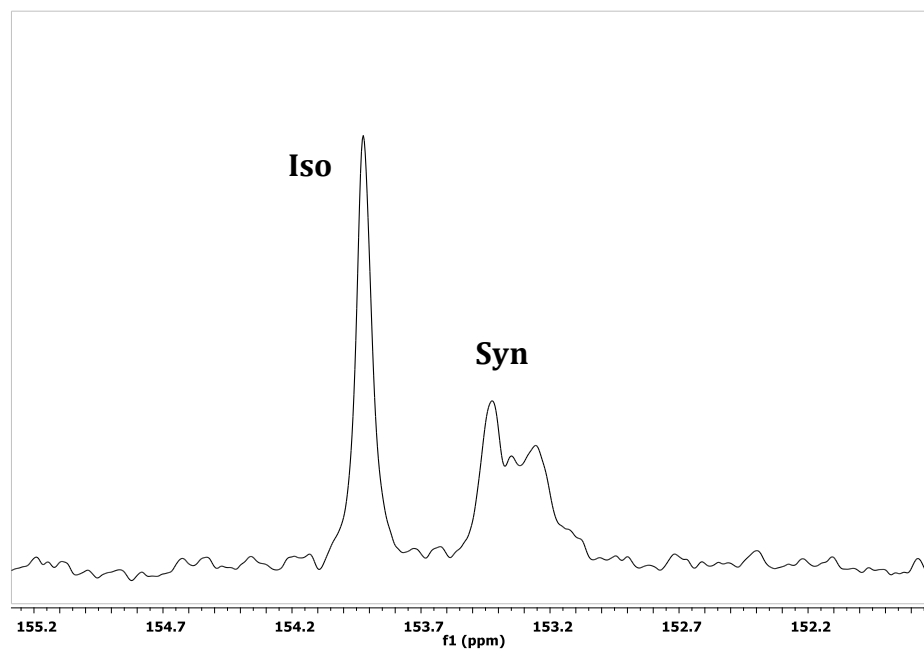
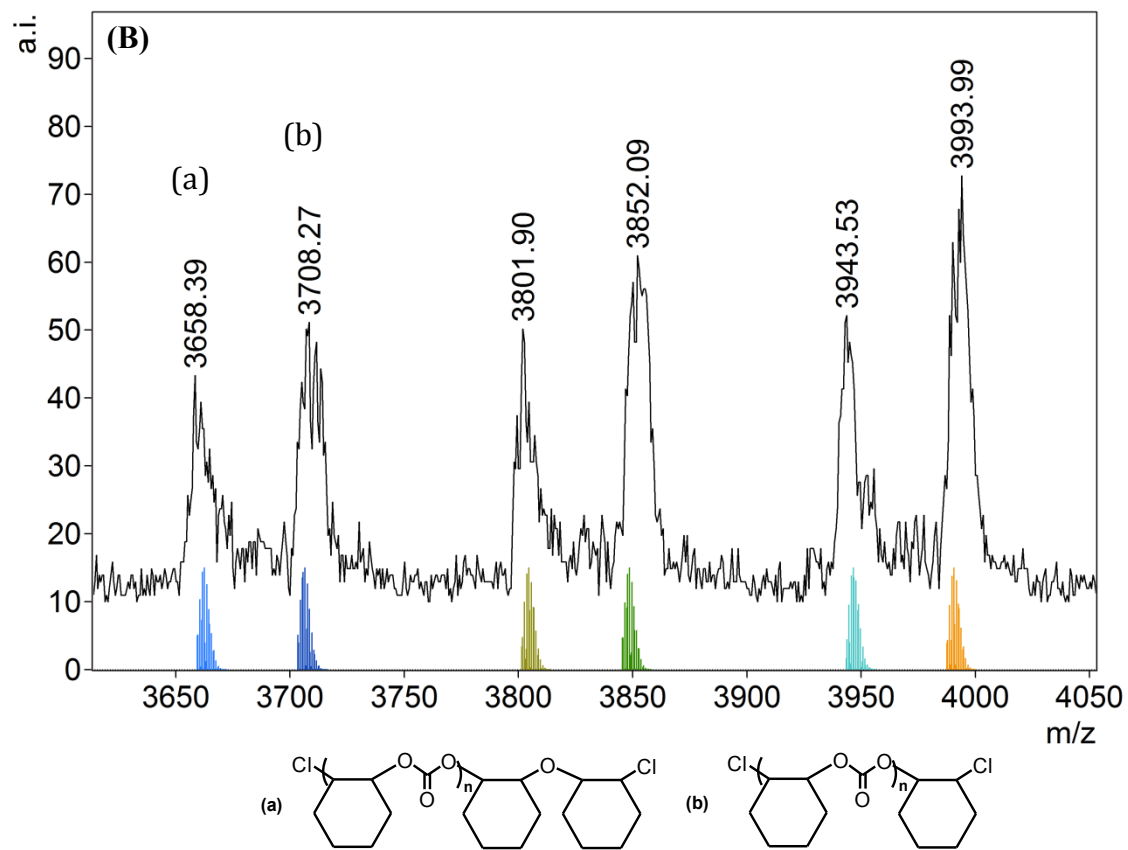
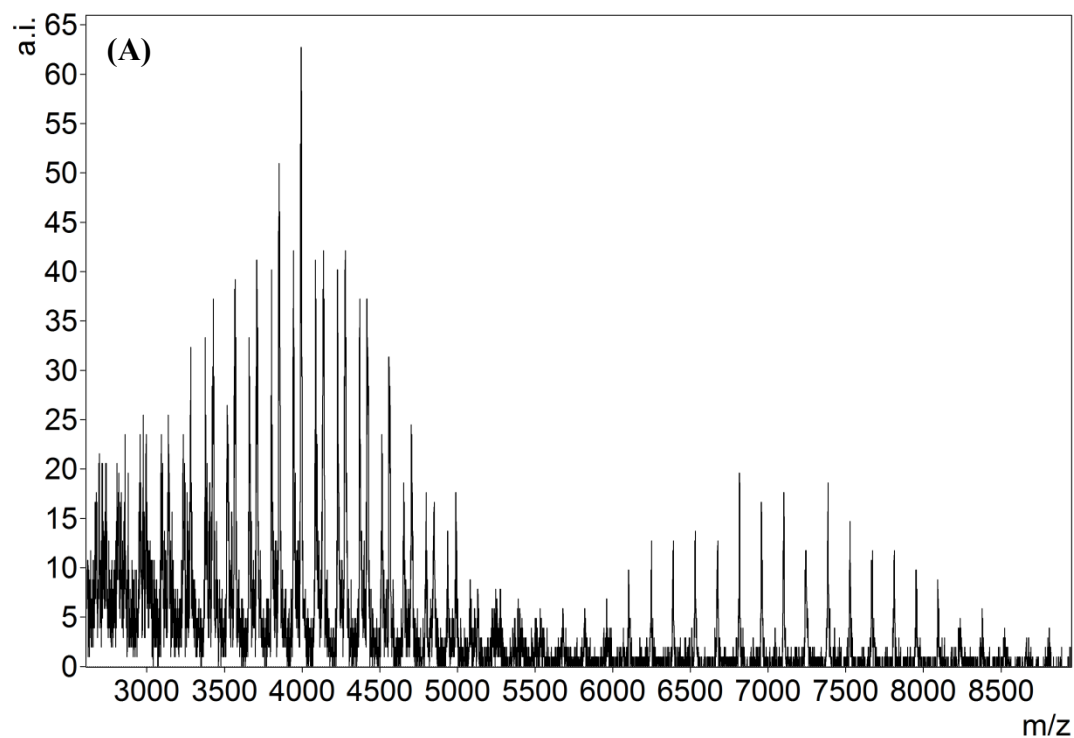


Figure S9. Carbonyl region of the ¹³C NMR spectrum (75.5 MHz, CDCl₃) of PCHC prepared as described in Table 2, entry 1.



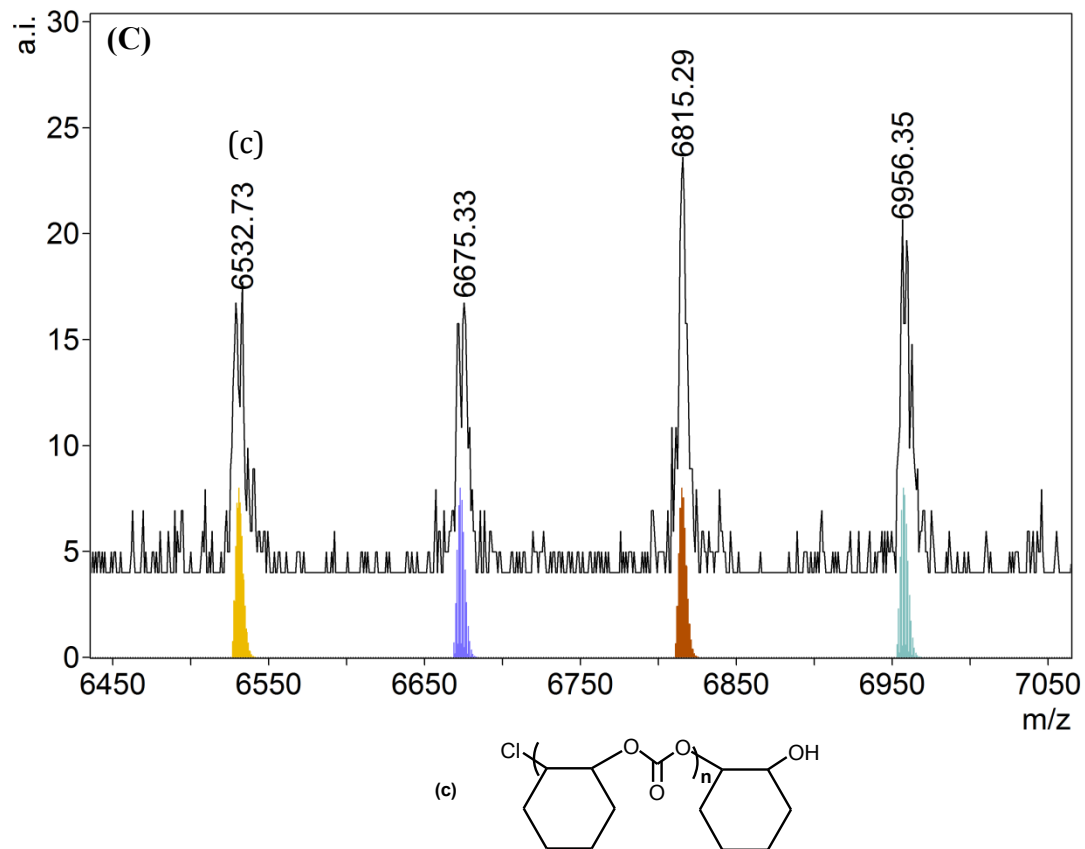


Figure S10. (A) MALDI-TOF MS of PCHC produced by **1** (Table 2, entry 4). (B) Magnified lower mass region of the spectrum ($n = 24 - 27$). (C) Magnified higher mass region of the spectrum ($n = 45 - 48$). Modeled isotopic masses and images for the polymer chains with end-groups (a), (b) and (c).

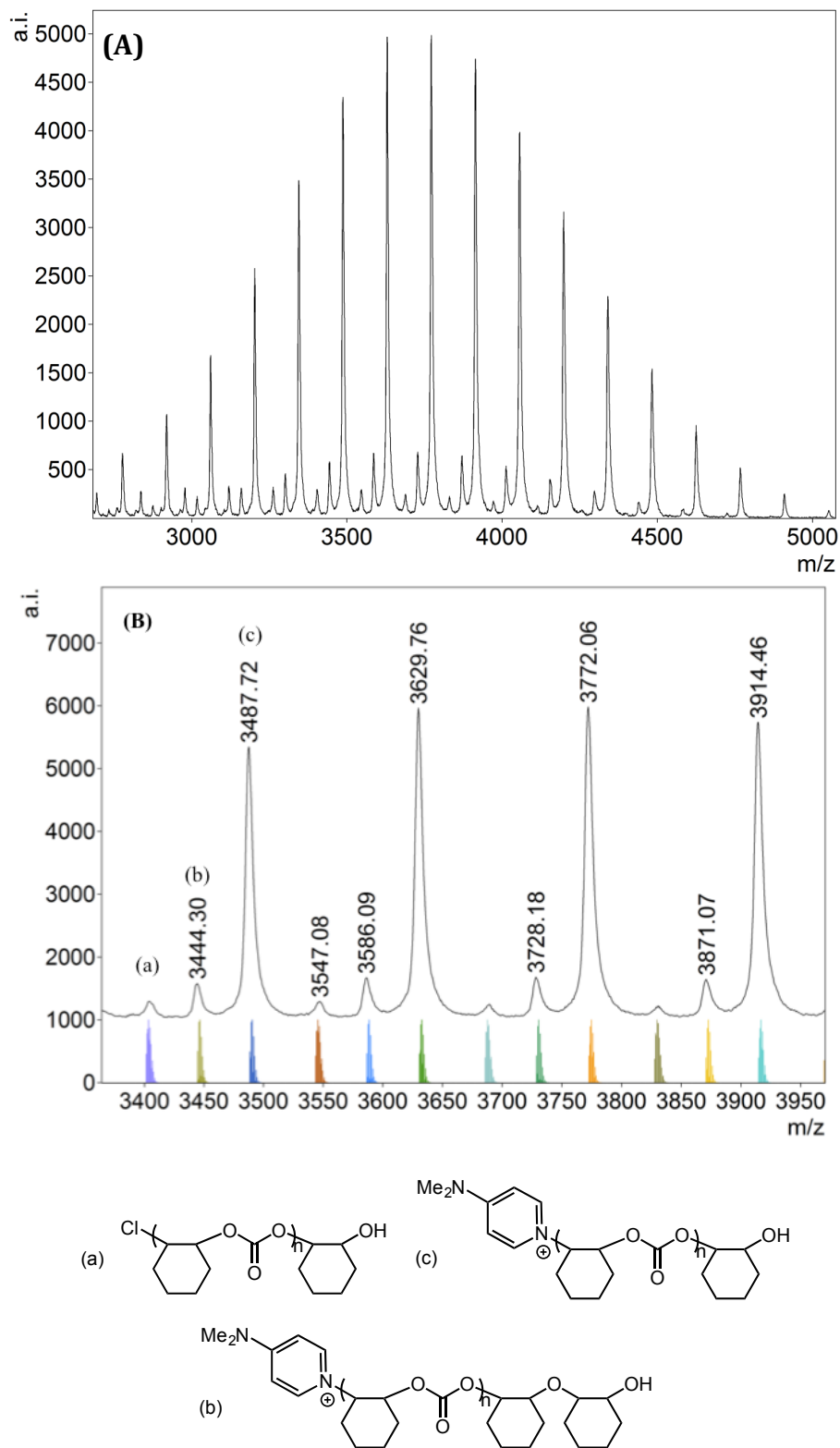
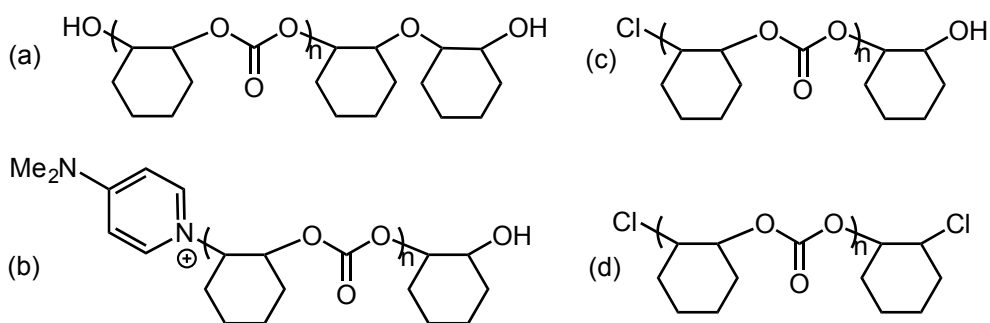
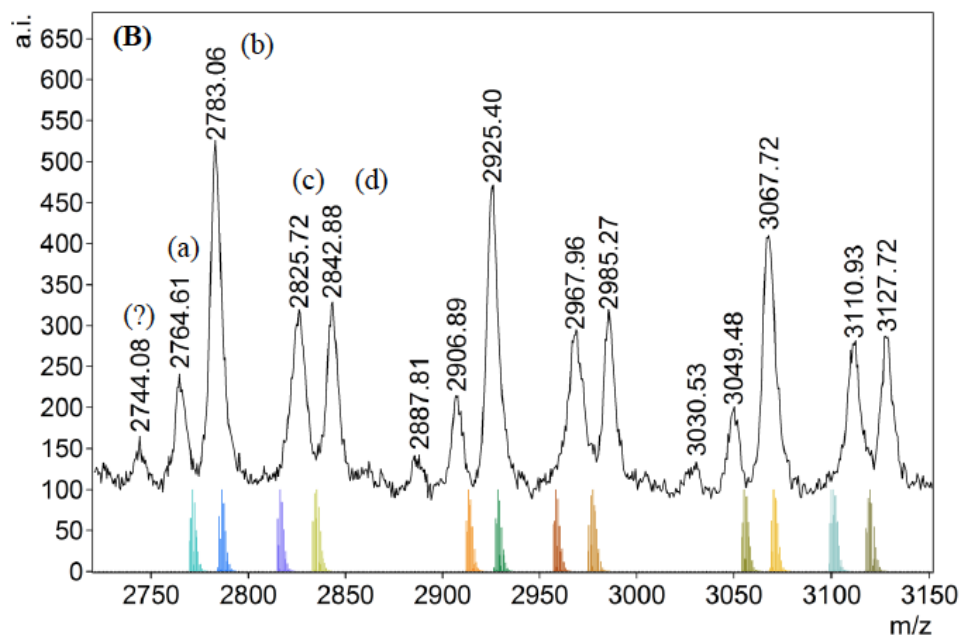
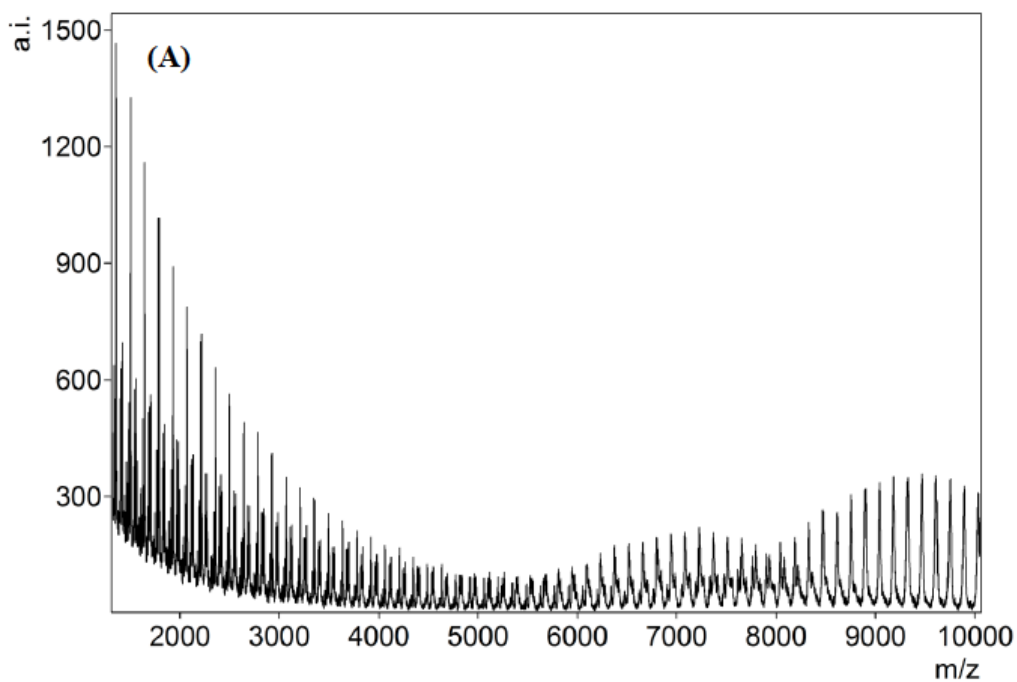


Figure S11. (A) MALDI-TOF MS of PCHC produced by **2** (Table 2, entry 5). (B) Magnified region of the spectrum (n = 22 – 25) and modeled isotopic masses and images for the polymer chains with end-groups (a) – (c).



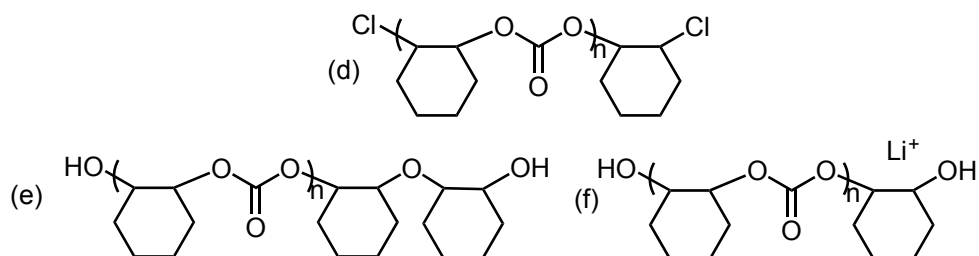
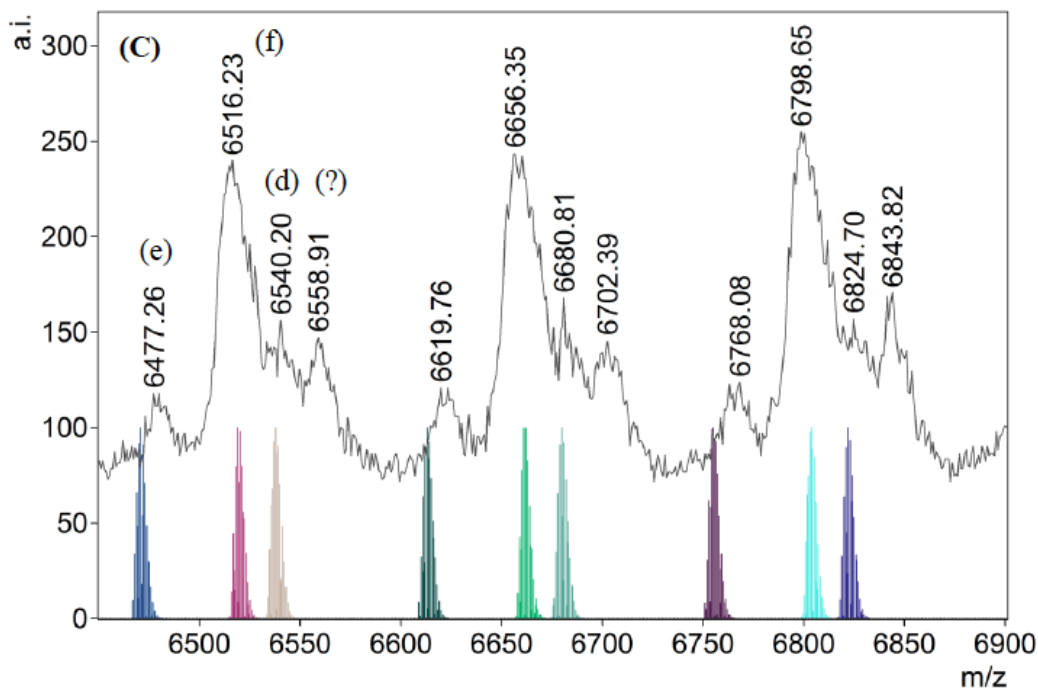
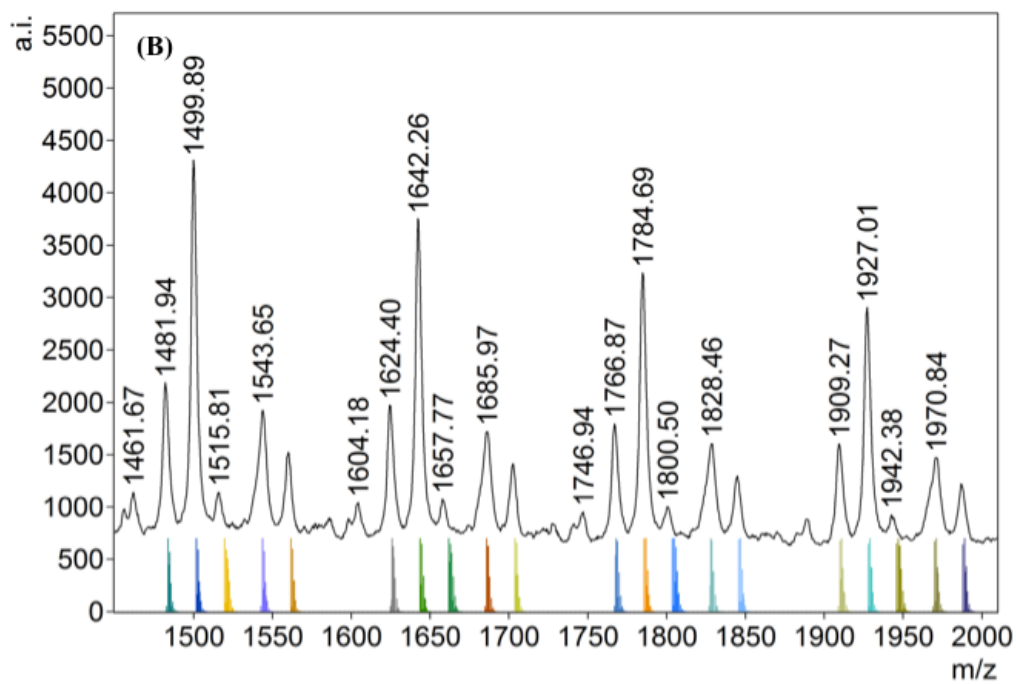
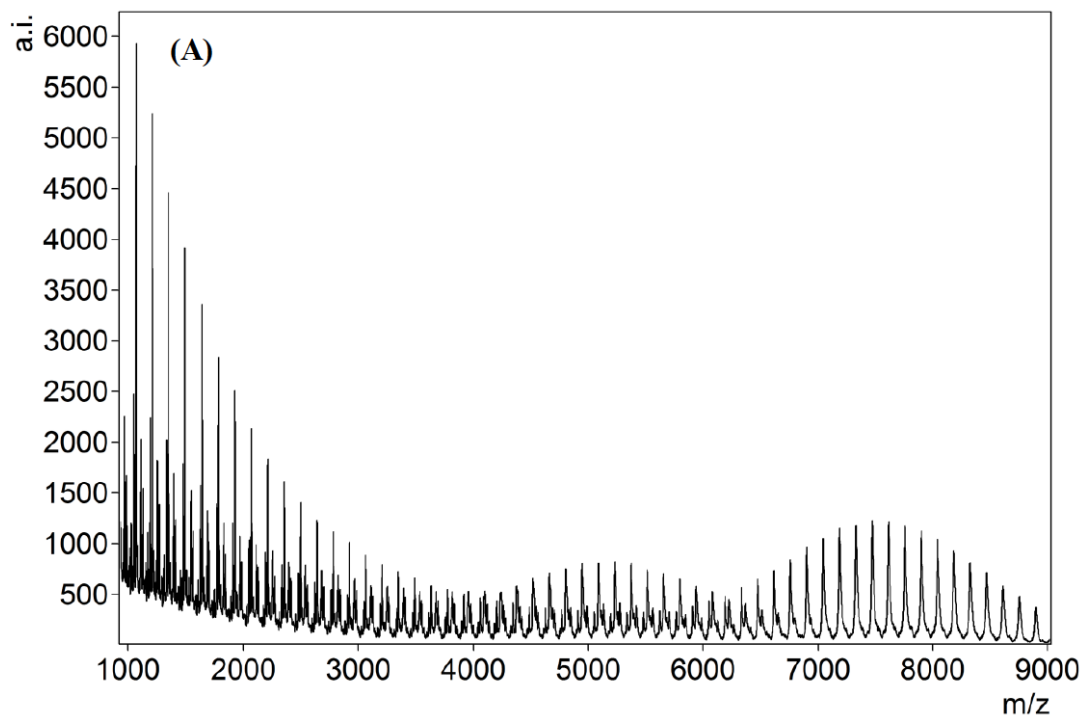


Figure S12. (A) MALDI-TOF MS of PCHC produced by **3** (Table 3, entry 1). (B) Magnified low molecular weight region of the spectrum ($n = 18 - 20$). (C) Magnified high molecular weight region of the spectrum ($n = 44 - 47$). Modeled isotopic masses and images for the polymer chains with end groups (a) – (f).



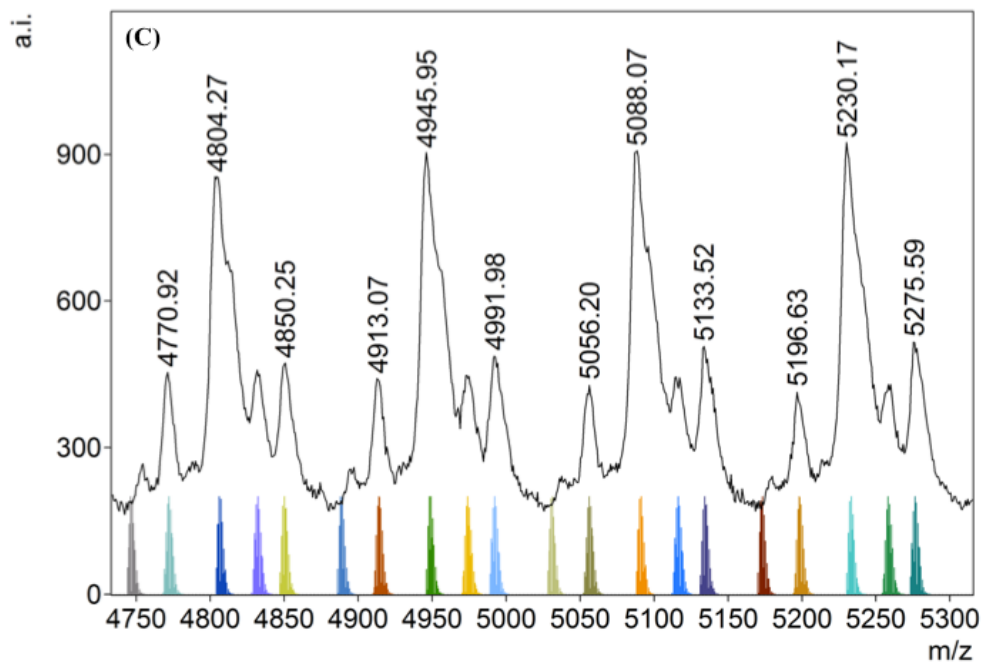


Figure S13. (A) MALDI-TOF MS of PCHC produced by **3** (Table 3, entry 5). (B) Magnified low molecular weight region of the spectrum ($n = 9 - 11$). (C) Magnified high molecular weight region of the spectrum ($n = 32 - 35$).