

Supporting Information

Silver nanocube coupling with nanoporous silver film for dual-molecule recognition based ultrasensitive SERS detection of dopamine

Dechan Lu¹, Min Fan¹, Rongyuan Cai¹, Zufang Huang², Ruiyun You^{1*}, Luqiang Huang³, Shangyuan Feng² and Yudong Lu^{1*}.

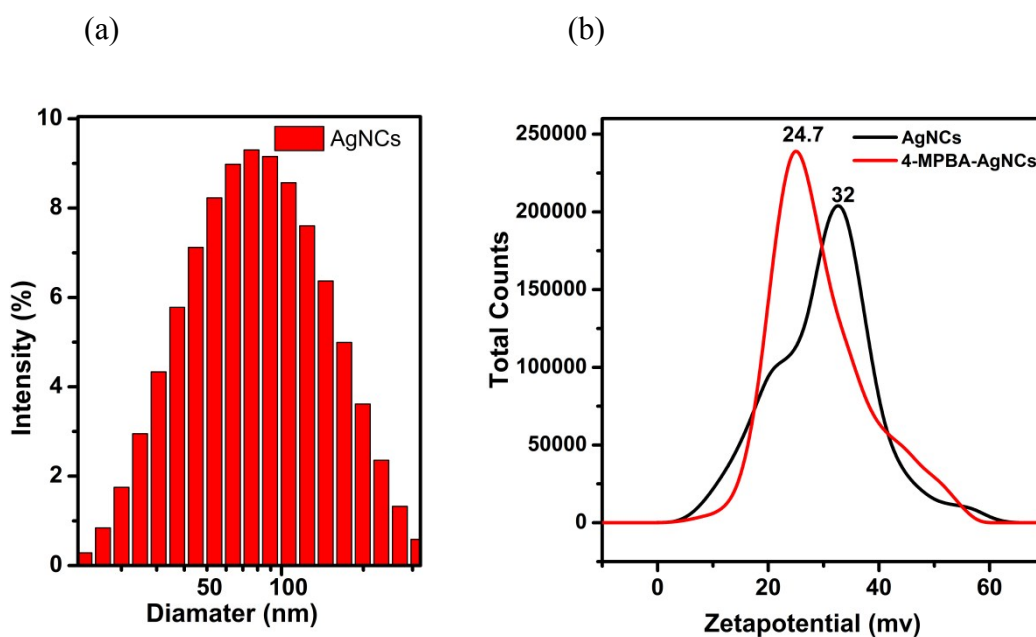


Fig.S1.(a)DLS analysis of the AgNCs, (b)Zeta potential analysis of AgNCs before and after functionalization with 4-MPBA.

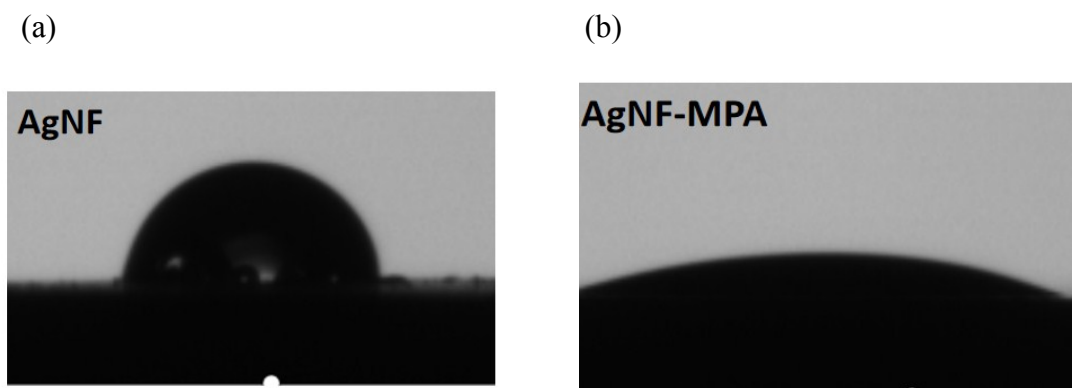


Fig.S2.The contact angle measurements for the AgNF(a) and AgNF modified with MPA(b), respectively.

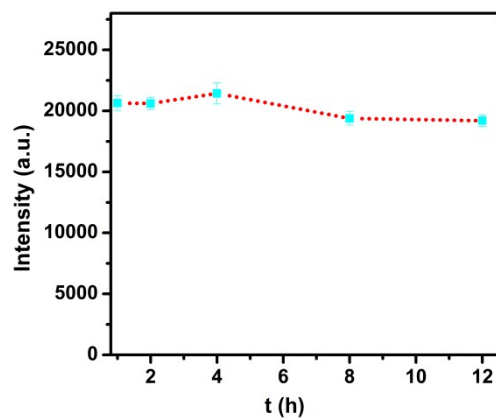


Fig.S3. The stability of DA sensor, variation of the SERS intensity of the 1074 cm^{-1} band as a function of time.