

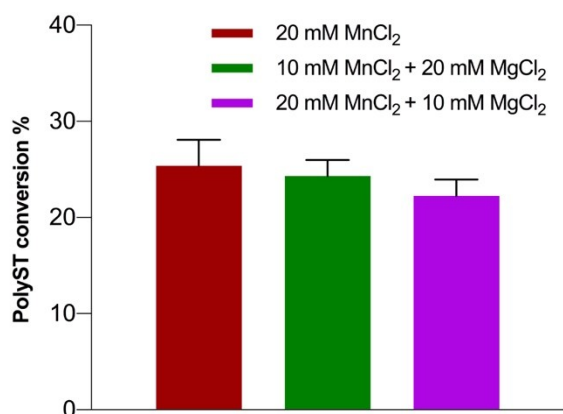
## An efficient assay for identification and quantitative evaluation of potential polysialyltransferase inhibitors

Xiaoxiao Guo, Jodie R Malcolm, Marrwa M Ali, Goreti Ribeiro Morais, Steven D Shnyder, Paul M Loadman, Laurence H Patterson, and Robert A Falconer\*

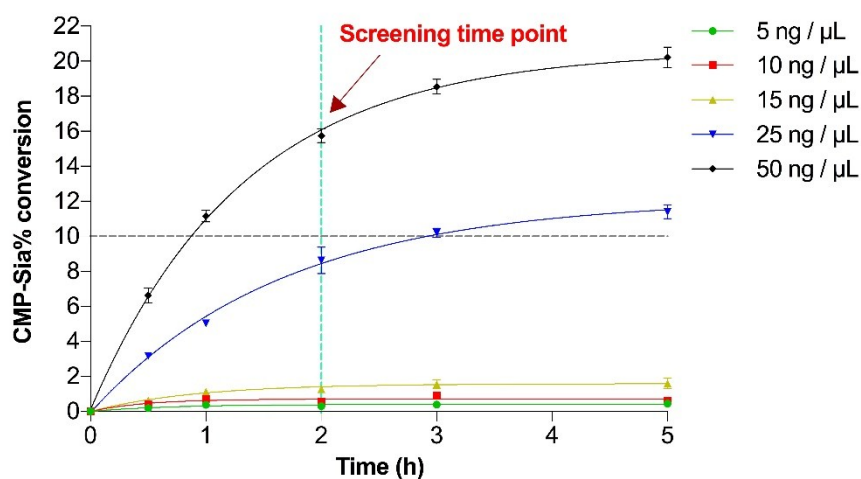
*Institute of Cancer Therapeutics, Faculty of Life Sciences, University of Bradford, Bradford BD7 1DP, United Kingdom*

\*Corresponding author. Tel +44 (0)1274 235842. E-mail address: [r.a.falconer1@bradford.ac.uk](mailto:r.a.falconer1@bradford.ac.uk)

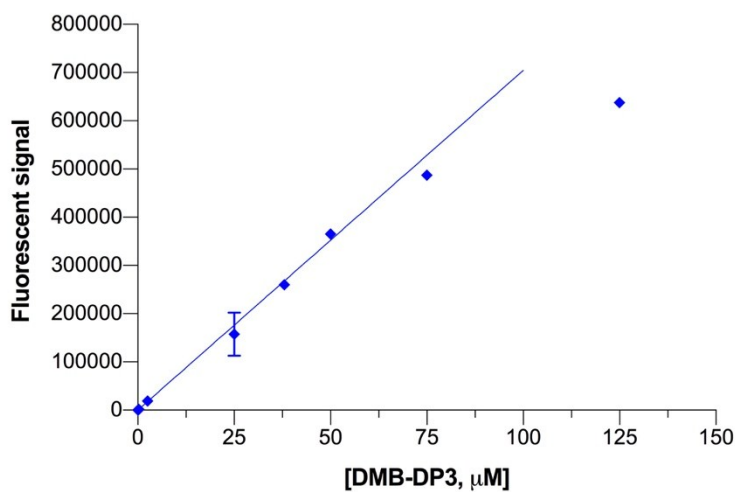
### SUPPLEMENTARY FIGURES



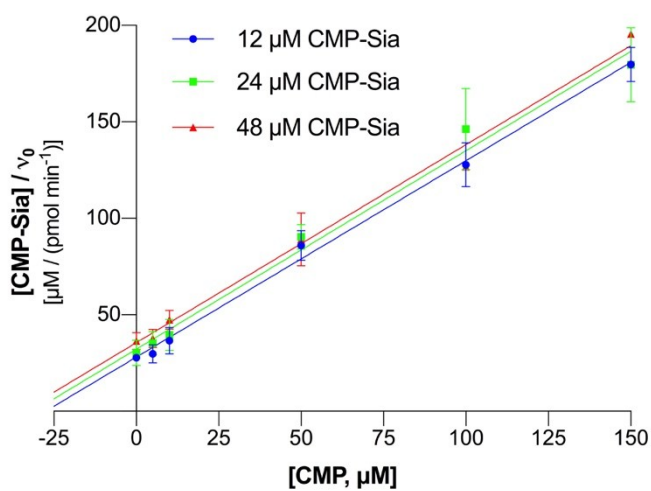
**Figure S1.** Comparison of polyST enzymatic conversion at 2 h, 25 °C, in the presence of either Mn<sup>2+</sup> ions alone, or in combination with Mg<sup>2+</sup> ions. Data plotted are mean values ± SD from 3 independent experiments.



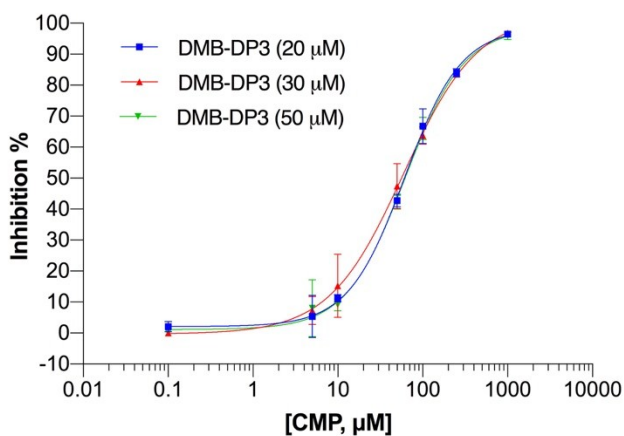
**Figure S2.** Effect of polyST concentration on conversion of substrate, in the presence of 100 μM CMP-Sia (original  $K_M$  at pH 6.7). Data plotted are mean values ± SD from 3 independent experiments.



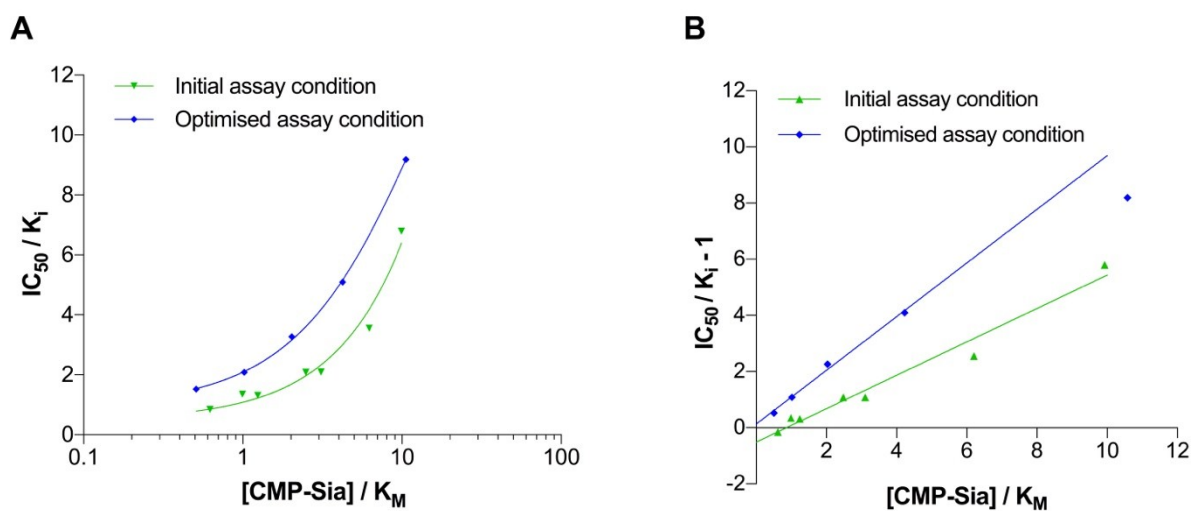
**Figure S3.** Linearity range analysis of DMB-DP3 in fluorescent detection. Data plotted are mean values  $\pm$  SD from 3 independent experiments.



**Figure S4.** Cornish-Bowden plot for inhibition of polyST by CMP. Data plotted are mean values  $\pm$  SD from 3 independent experiments.



**Figure S5.** Concentration-dependent inhibition of polyST by CMP in the presence of various acceptor concentrations under the optimised assay conditions (pH 5.8,  $[S] = K_M$ ). Data plotted are mean values  $\pm$  SD from 3 independent experiments.



**Figure S6.** Plots of changes in apparent potencies ( $IC_{50}$  values) of CMP as a function of substrate concentration in a semi-log plot (A), and in a linear plot (B), in both initial (green triangles) and optimised (blue squares) assay conditions.