

ELECTRONIC SUPPORTING INFORMATION

Comparison of standard and HD FT-IR with multimodal CARS/TPEF/SHG/FLIMS imaging in the detection of the early stage of pulmonary metastasis of murine breast cancer

Karolina Chrabaszcz,^{a,b,c} Tobias Meyer,^{d,e} Hyeonsoo Bae,^e Michael Schmitt,^e Agnieszka Jaształ,^b Marta Smeda,^b , Marta Stojak,^b Jürgen Popp,^{d,e}
Kamilla Malek,^{a,b} Katarzyna M. Marzec,^{b,c†}

^a Faculty of Chemistry, Jagiellonian University, 2 Gronostajowa St., 30-387 Krakow, Poland

^b Jagiellonian Centre for Experimental Therapeutics, Jagiellonian University, 14 Bobrzynskiego ST., 30-384 Krakow, Poland

^c Centre for Medical Genomics OMICRON, Jagiellonian University Medical College, Kopernika 7c, 31-034 Krakow, Poland

^d Leibniz-Institute of Photonic Technology e.V., Albert-Einstein-Str. 9, 07745 Jena, Germany

^e Institute of Physical Chemistry and Abbe Center of Photonics, Friedrich-Schiller-University, Albert-Einstein-Str. 6, 07745 Jena, Germany

[†]Corresponding Author: Katarzyna M. Marzec (e-mail: katarzyna.marzec@jcet.eu)

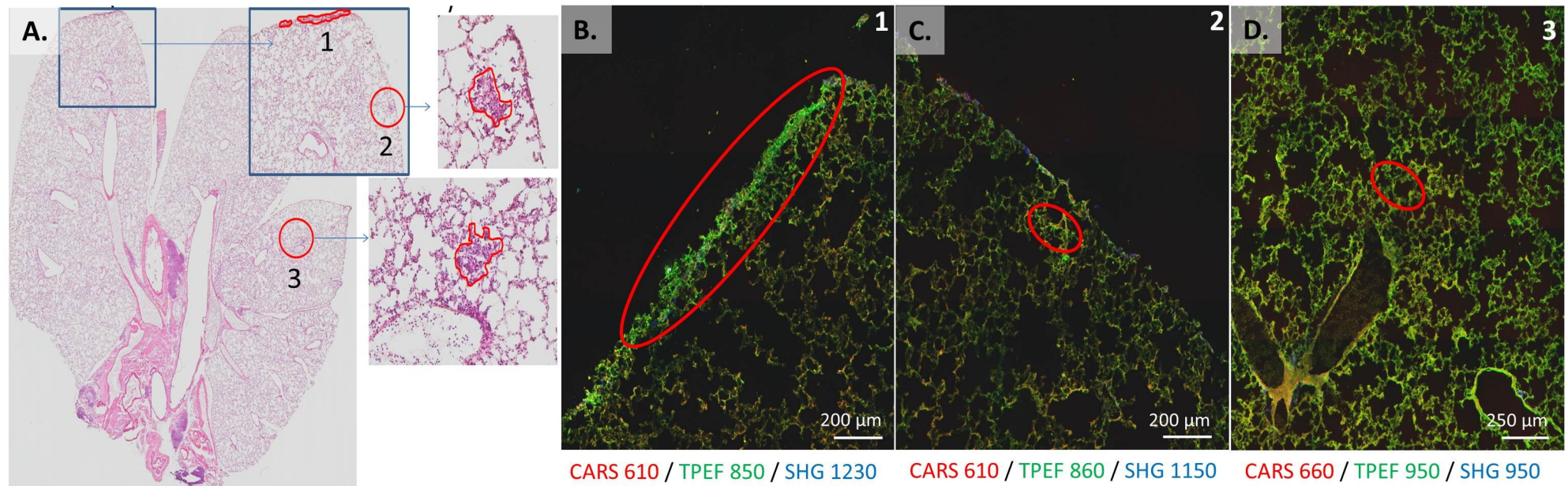


Figure S1. Comparison of H&E staining images of the tissue cross-sections (**A**) with marked micrometastasis area (**1-3**); (**B-D**) false-colour molecular map combined from CARS, TPEF and SHG images for the adjacent lung cross-section with selected areas (red) corresponding to the localization of cancer cells cluster from **A**.

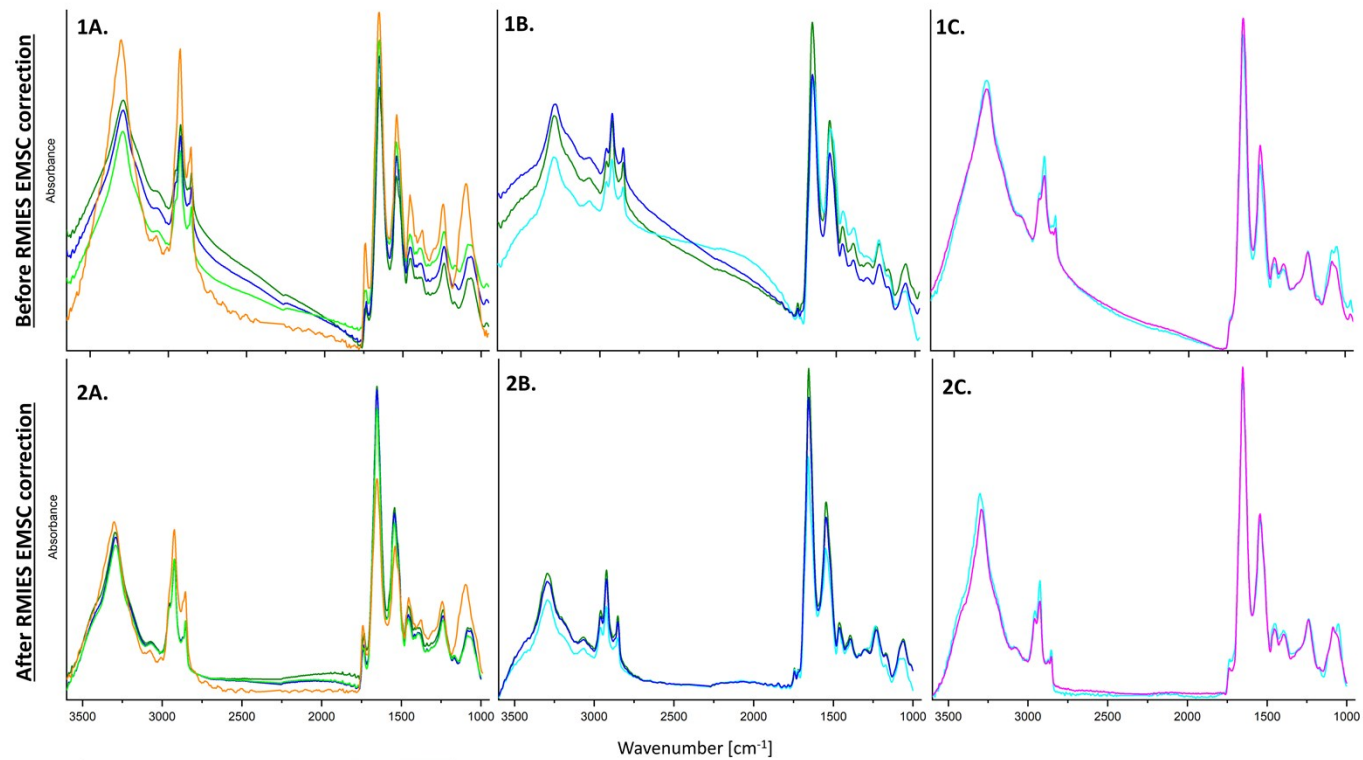


Figure S2. Mean normal FT-IR spectra extracted from the UHCA cluster maps (3A-C.) before (1A-C) and after (2A-C) without RMieS EMSC correction. Orange spectrum contains bands characteristic for OCT (c.a. 1730,1247,1100 cm^{-1}), therefore is not display in Fig.1. The colors of spectra correspond to the colors of the classes.

