

Electronic Supplementary Information

Remote Ablation Chamber for High Efficiency Particle Transfer in Laser Ablation Electrospray Ionization Mass Spectrometry

Marjan Dolatmoradi,^{‡^a} Jarod A. Fincher,^{‡^a} Andrew R. Korte,^a Nicholas J. Morris,^b
and Akos Vertes^{*,^a}

^a *Department of Chemistry, The George Washington University, Washington, DC 20052, USA*

^b *UES, Inc., Beavercreek, OH 45432, USA*

**Corresponding author*

E-mail: vertes@gwu.edu, Phone: +1 (202) 994-2717, Fax: +1 (202) 994-5873.

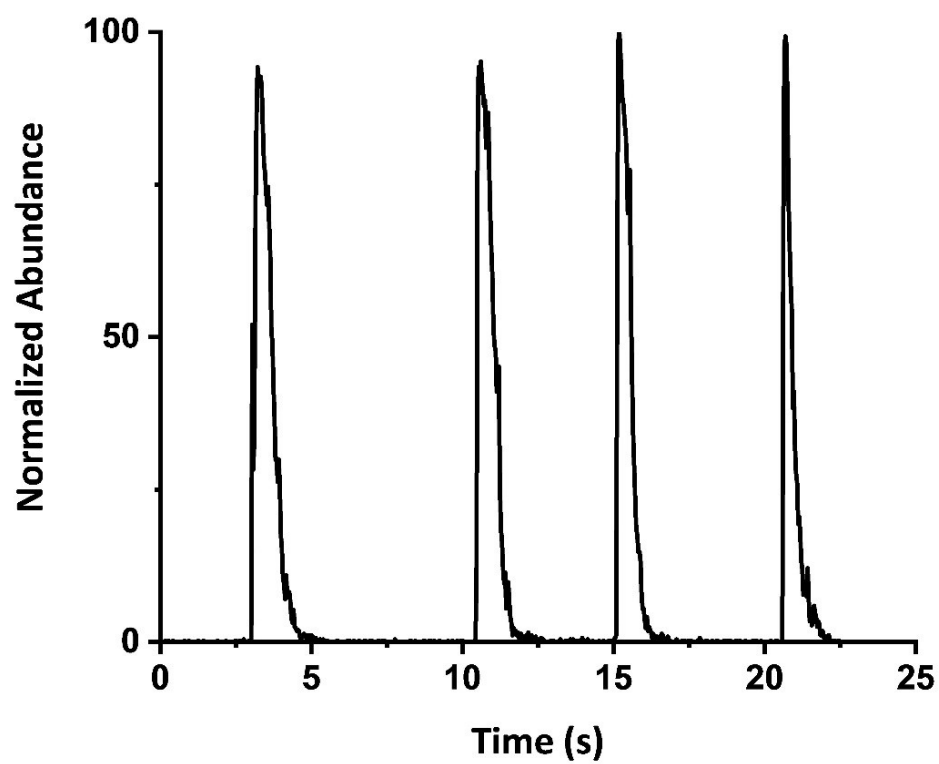


Figure S1: Temporal profile of verapamil signal for four single laser pulses impinging on tissue phantom in modified ablation chamber. No sample carryover is observed.

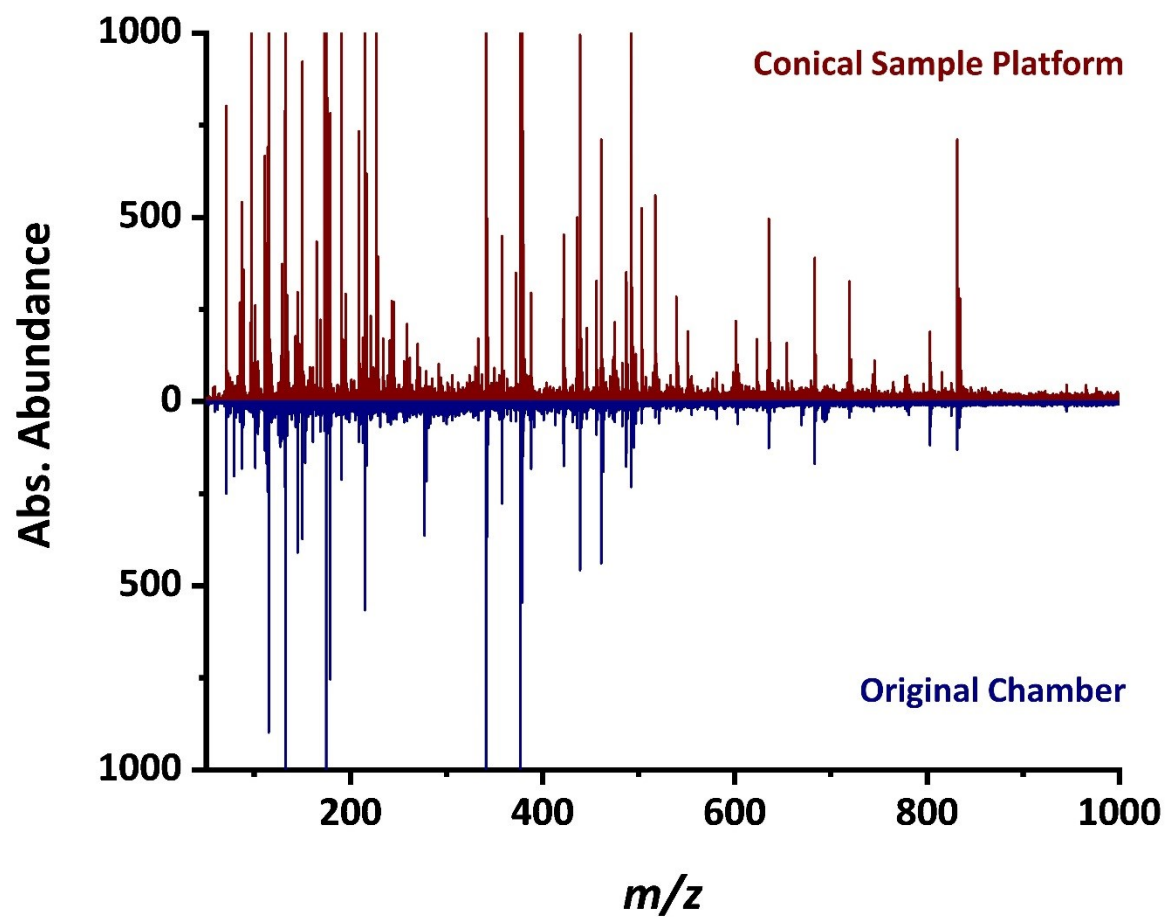


Figure S2: Zoomed-in views of mass spectra obtained from Brussels sprout (*B. oleracea*) stem sections using original and modified ablation chambers. After background subtraction, 129 and 106 peaks were detected for the modified and original chambers, respectively.

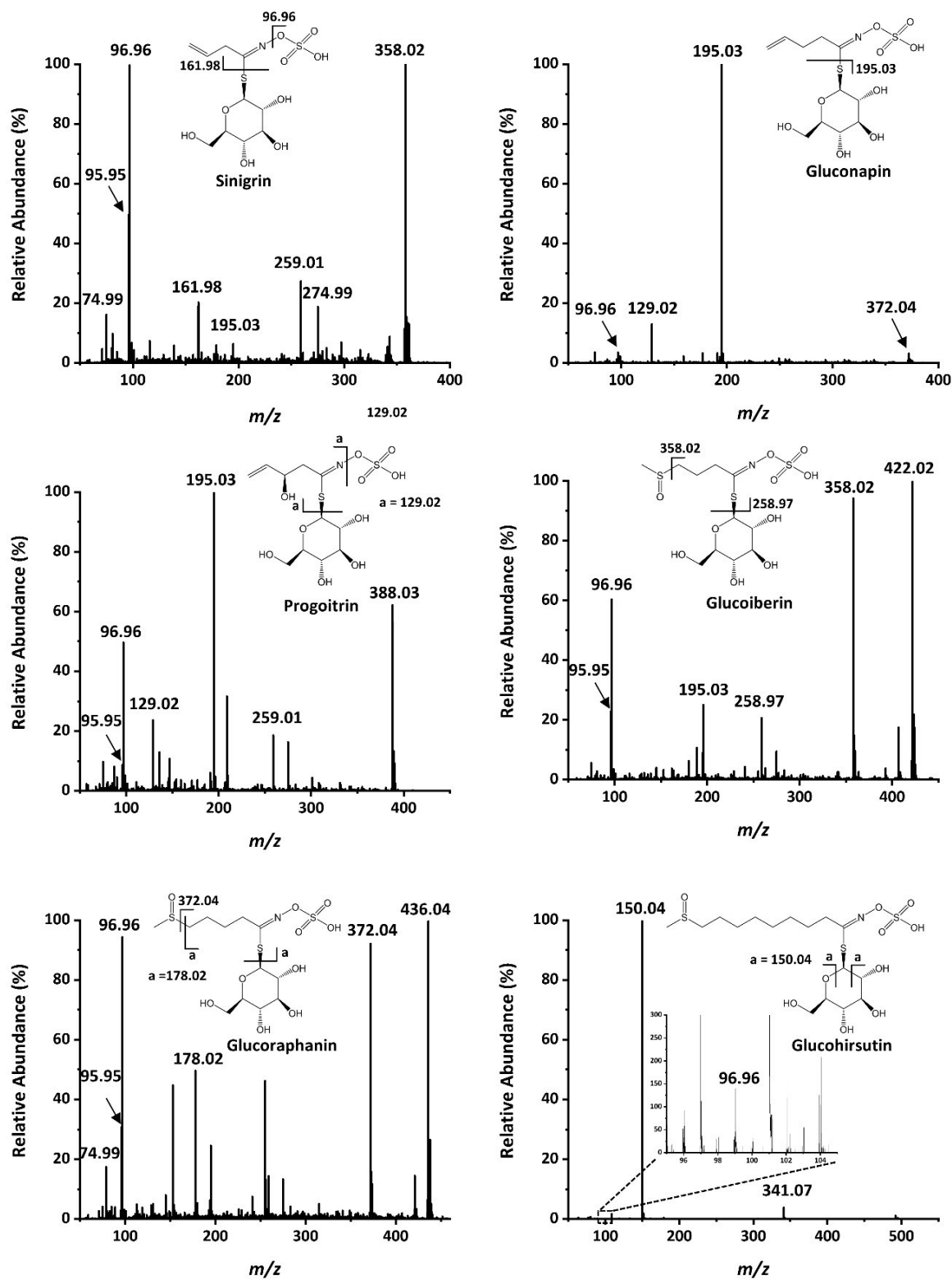


Figure S3: Tandem mass spectra for six glucosinolates from Brussels sprout (*B. oleracea*) stem sections.