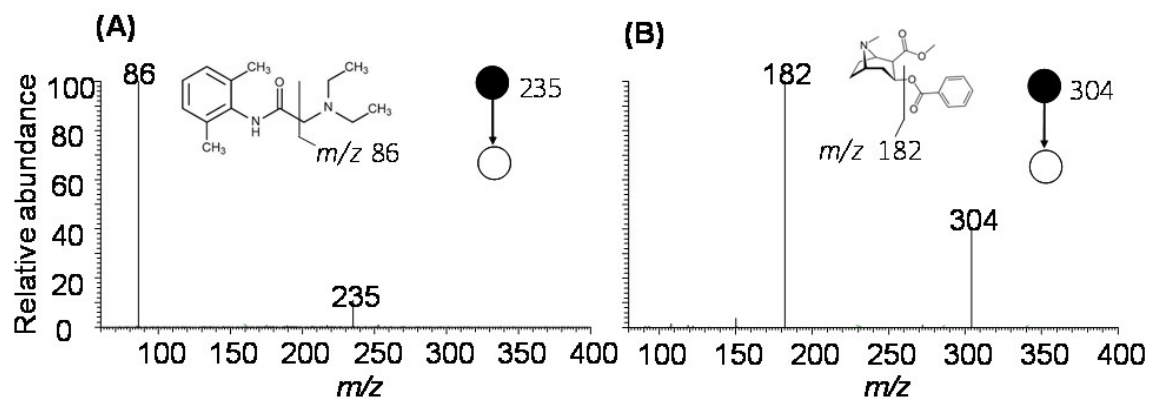
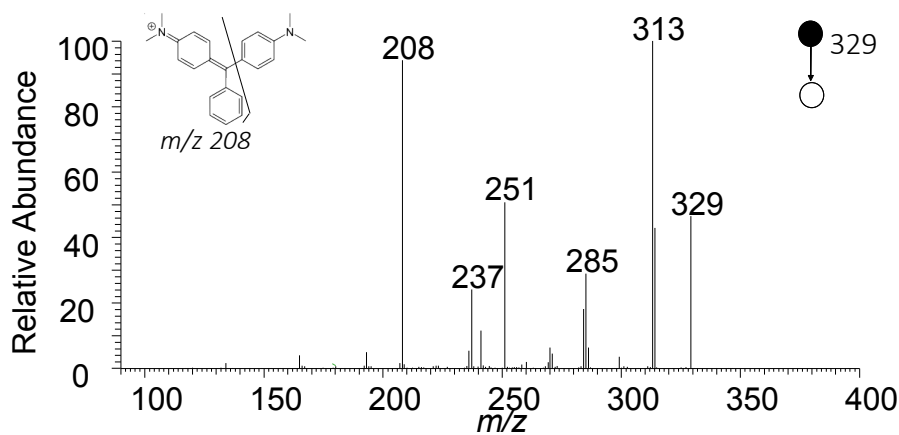


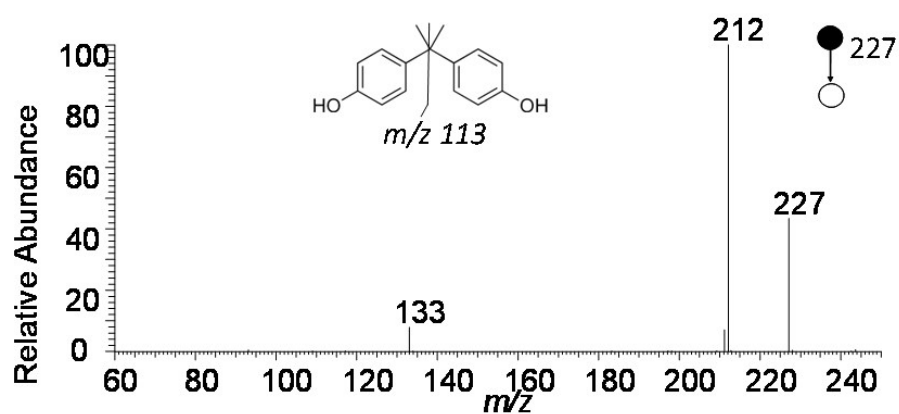
## Supplementary Material



**Fig. S1.** Tandem mass spectra obtained for 1  $\mu\text{g mL}^{-1}$  of (A) lidocaine and (B) cocaine in artificial saliva. The sample was previously submitted to EE with conditions as in Fig. 3.



**Fig. S2.** EE-PS(+)-MS/MS obtained for 1  $\mu\text{g mL}^{-1}$  of MG ( $m/z$  329) in tap water. Conditions as in Fig. 6.



**Fig. S3.** EE-PS(-)-MS/MS for a wine sample fortified with 100 ng mL<sup>-1</sup> of BPA.

Conditions as in Fig. 7.