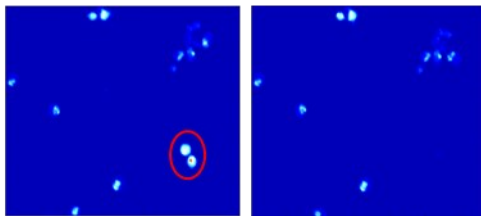
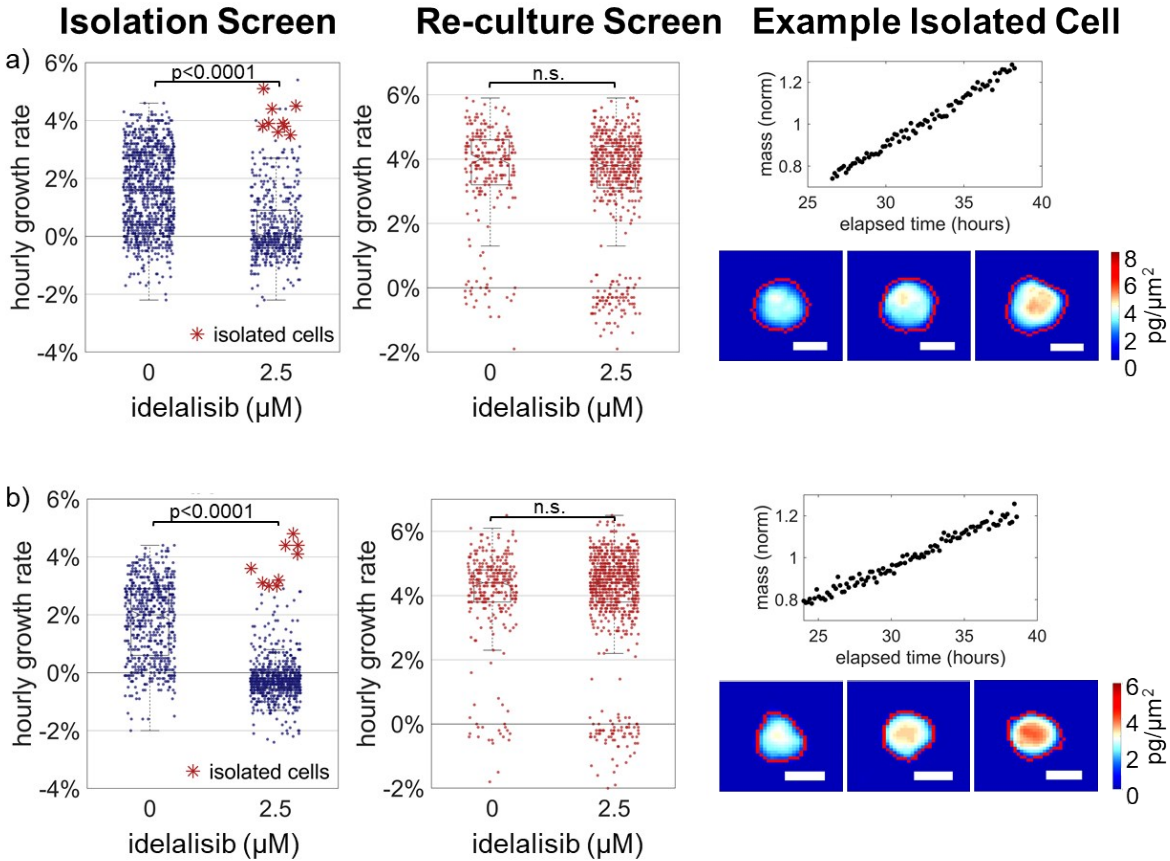


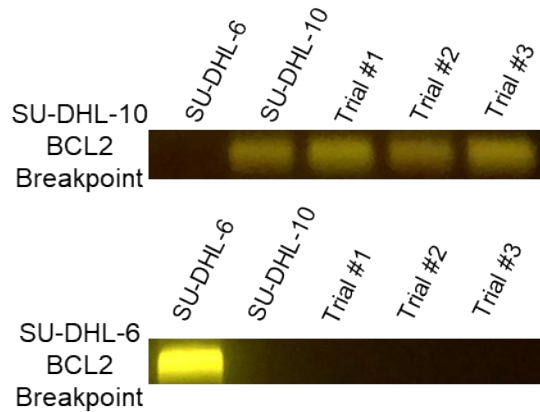
Before Collection After Collection



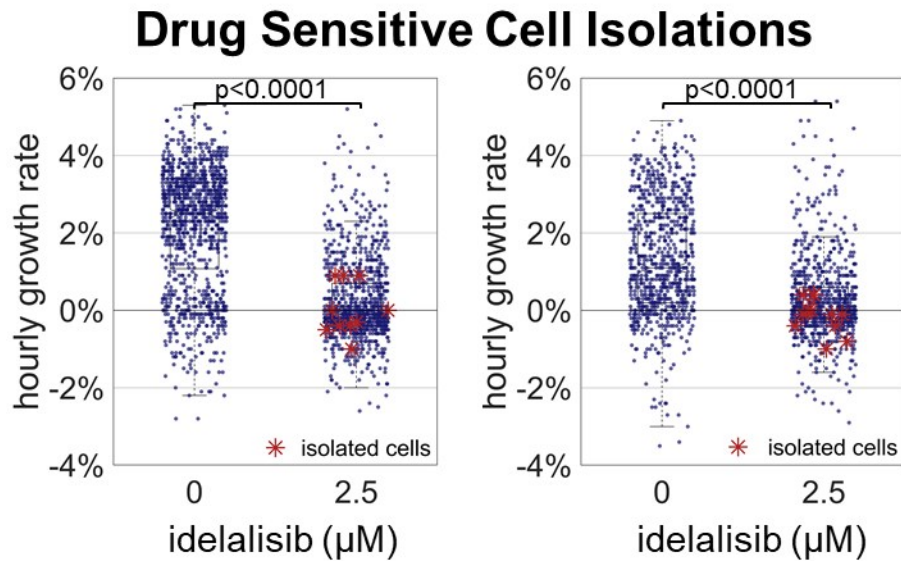
Supplementary Figure #1: An isolated cell cluster (tracked together) from the experiment in Fig. 3 grew at 4.8% \pm 0.06% per hour with before and after collection images shown demonstrating specificity of micropipette collection



Supplementary Figure #2: Replicates of resistant cell isolation. a) The 1:100 SU-DHL-10/6 mixture was exposed to 2.5 μM idelalisib for 24 hours with mass accumulation measured from 24-40 hours post dosing. Of 814 cells exposed to 2.5 μM idelalisib with biomass growth measured, 9 were isolated. Isolated cells were grown for 20 days and then rescreened at 2.5 μM of idelalisib with median growth rate of treated cells increased to 3.8% \pm 0.1% per hour from 0% \pm 0.07% per hour in the isolation screen. An example of an isolated cell grew at 4.5% \pm 0.06% per hour. b) In an identical experiment, of 1,310 cells exposed to 2.5 μM idelalisib with biomass growth measured, 9 were isolated. Isolated cells were grown for 20 days and then rescreened at 2.5 μM of idelalisib with median growth rate of treated cells increasing to 4.4% \pm 0.07% per hour from was -0.3% \pm 0.02% per hour in the isolation screen. An isolated cell which grew at 3.1% \pm 0.05% per hour.



Supplementary Figure #3: PCR of re-cultured cells from all replicates (Trials #1-3) with controls. Trials #1-3 demonstrated amplification at the SU-DHL-10 breakpoint but not the SU-DHL-6 breakpoint further confirming that SU-DHL-10 cells were isolated.



Supplementary Figure #4: Replicates of drug sensitive isolation a) median growth rate of untreated cells is 2.5% +/- 0.1% per hour while the median growth of treated cells was -0.1% +/- 0.05%. 12 cells were isolated. b) median growth rate of untreated cells was 1.1% +/- 0.2% per hour while the median growth of treated cells was 0% +/- 0.05%. 10 cells were isolated. Isolated cells were re-cultured for 20 days and no cell replication was observed.

Cell Line	Breakpoint	Genomic Location	Primer
SU-DHL-6	MBR (BCL2)	chr18: 63126367: 63126401	CTATGGTGGTTTTGACCTTTAGAGAGTTGCTTTACG
	MBR (IGH)	chr 14: 105861506-10586154	CTAGGCCAGTCCTGCTGACGCCGCATCGGTGATTC
SU-DHL-10	ICR (BCL2)	chr18: 63107355-63107377	TCGTTCTCAGTAAGTGAGAGTGC
	ICR (IGH)	chr14:105863199-105863214	TGAGGAGACGGTGACC

Supplementary Table #1: Locations and sequences of PCR primers for t(14:18) for SU-DHL-6 and SU-DHL-10.