

Electronic Supplementary Information (ESI)

Application of thermo-sensitive imprinted SERS substrate on the rapid trace detection of ofloxacin

Caiyun Jiang,^{a, b, 1} Ting Wu,^{a, 1} Jiaxun Liu^a and Yuping Wang^{*a}

^a College of Chemistry and Materials Science, Nanjing Normal University, Nanjing 210023, China. Email: wangyuping@njnu.edu.cn

^b Jiangsu Engineering and Research Center of Food Safety, Department of Engineering and Technology, Jiangsu Vocational Institute of Commerce, Nanjing 210007, China.

a

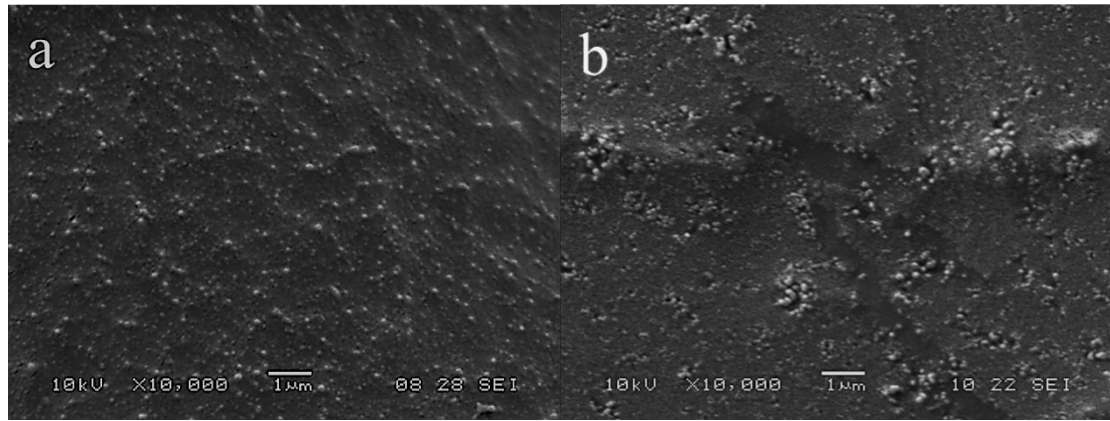


Figure S1 SEM images of AgNPs-MIPs after drying at -54 °C (a) and 50 °C (b).