

SUPPLEMENTARY MATERIAL

Assessment of semi-permanent hair dyes in wash water from beauty salons by liquid chromatography-tandem mass spectrometry reaction monitoring (LC-MS/MS-SRM)

Jefferson Honorio Franco^a, Bianca F. da Silva^a, and Maria V. B. Zanoni ^{*a}

^aInstitute of Chemistry-State University “Julio de Mesquita Filho”-UNESP-Avenida Professor Francisco Degni, 55, Quitandinha, 14800-900, Araraquara-SP, Brazil;

*Author to whom correspondence should be addressed; E-Mail: miboldrin@gmail.com

Tel.: +55-16-3301-9619; Fax: +55-16-3322-2308.

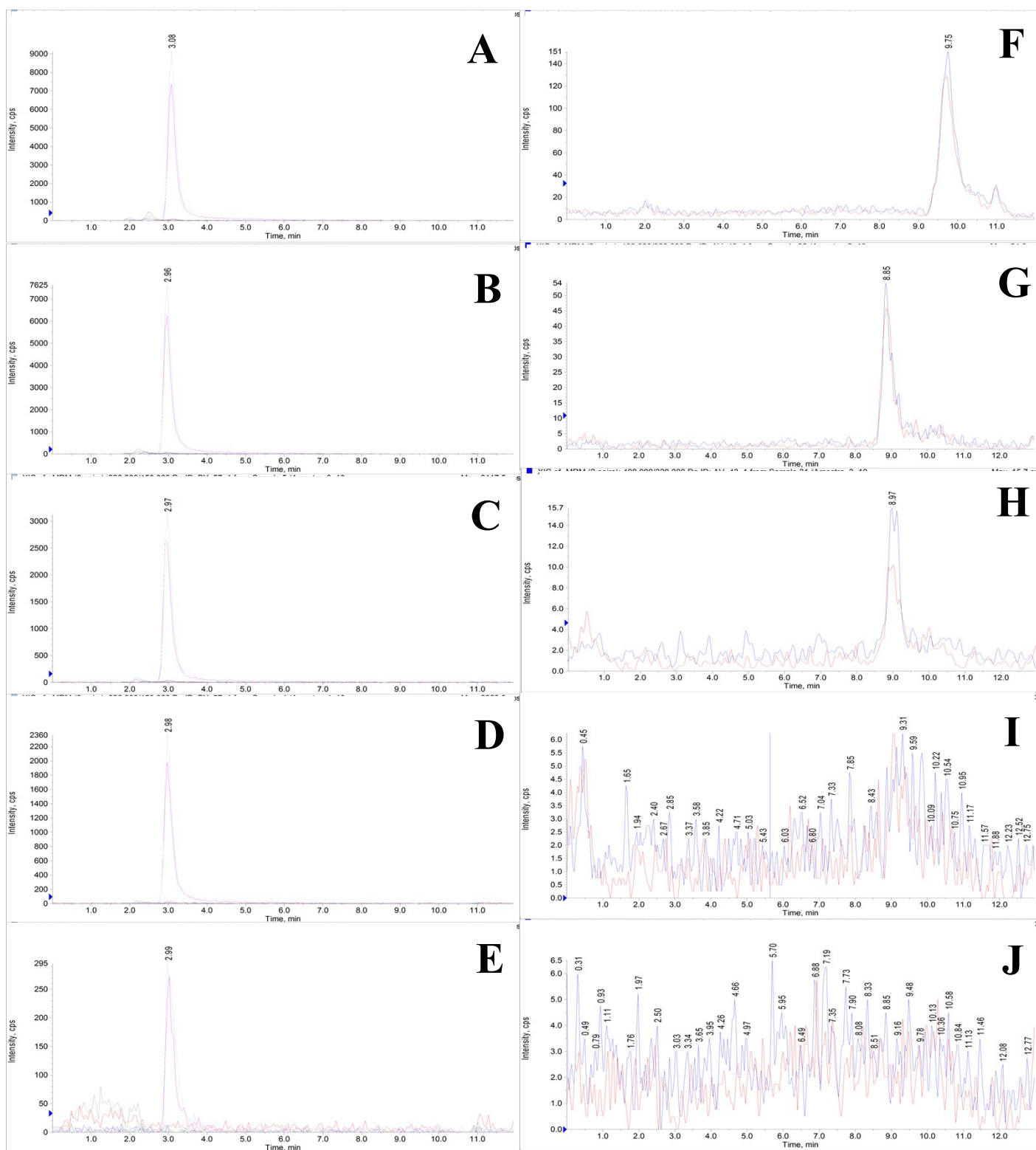


Figure S1. LC-MS/MS-SRM chromatograms obtained for the hair dyes in wash water. Positive mode: 1^o, 2^o, 3^o, 4^o and 5^o washing day represented by A, B, C, D and E, respectively. Negative mode: 1^o, 2^o, 3^o, 4^o and 5^o washing day represented by F, G, H, I, and J, respectively.