

Supporting Information

Rapid and highly sensitive detection of *Salmonella Typhimurium* in lettuce by using magnetic fluorescent nanoparticles

Ziang Guo, Xiaowei Huang*, Zhihua Li, Jiyong Shi*, Xiaodong Zhai, Xuetao Hu,

Nini Liang, Xiaobo Zou*.

School of Food and Biological Engineering, Jiangsu University, Zhenjiang 212013,

China

*Corresponding author:

Prof. Xiaobo Zou

Xiaowei Huang

Prof. Jiyong Shi

E-mail: zou_xiaobo@ujs.edu.cn

huangxiaowei@ujs.edu.cn

shi_jiyong@ujs.edu.cn

Figure S1

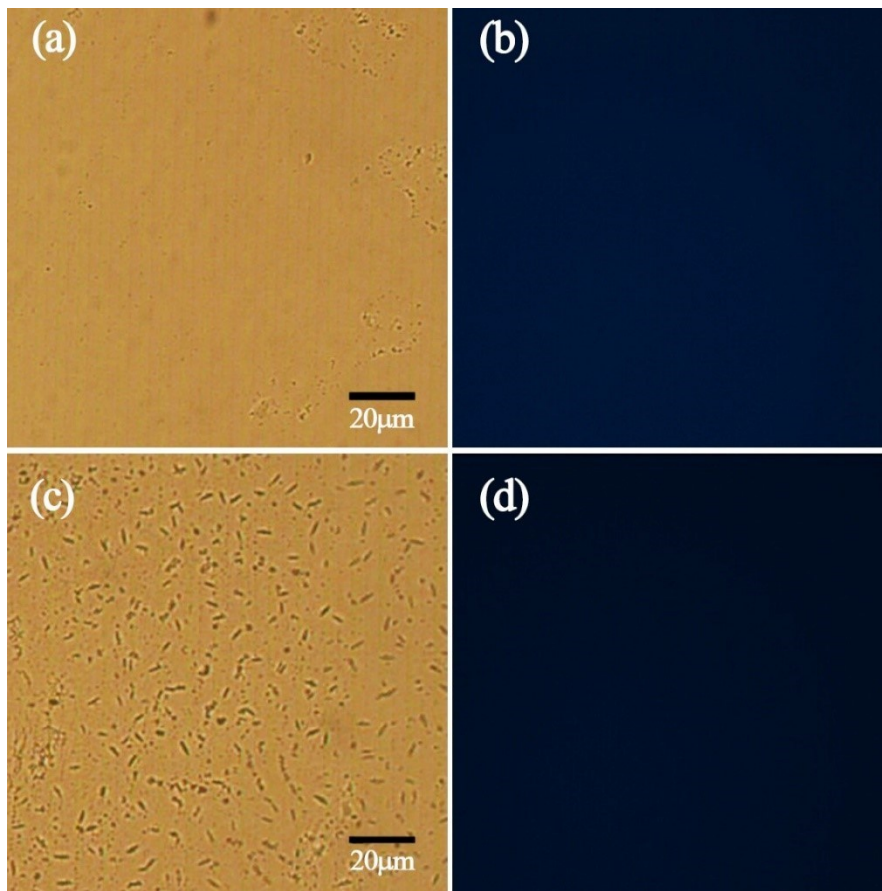


Figure S1 Microscopic image of the FMNCs-Apt incubated with *Salmonella*

Typhimurium ((a), (b): $10\text{ cfu}\cdot\text{mL}^{-1}$, (c), (d): $10^7\text{ cfu}\cdot\text{mL}^{-1}$)

Figure S2

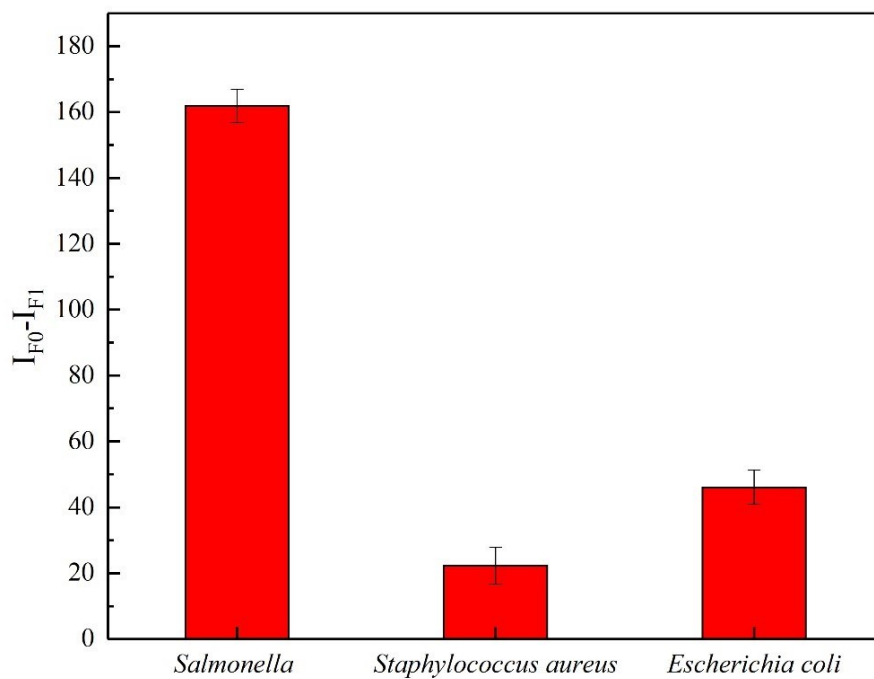


Figure S2 Fluorescence intensity changes of FMNCs (100 μg) of different kind of bacteria (A: *Salmonella Typhimurium*, B: *Staphylococcus aureus* C: *Escherichia coli*)