

Figure S1. Chromatograms of the MRM transitions of AQ-D₈ in a QuEChERS Earl Grey tea extract with a hydration step (*first row, blank sample; second row, sample spiked with 20 µg/kg of AQ-D₈*) and the same sample extracted with the proposed manual method (*third row, blank sample; fourth row, sample spiked with 20 µg/kg of AQ-D₈*).

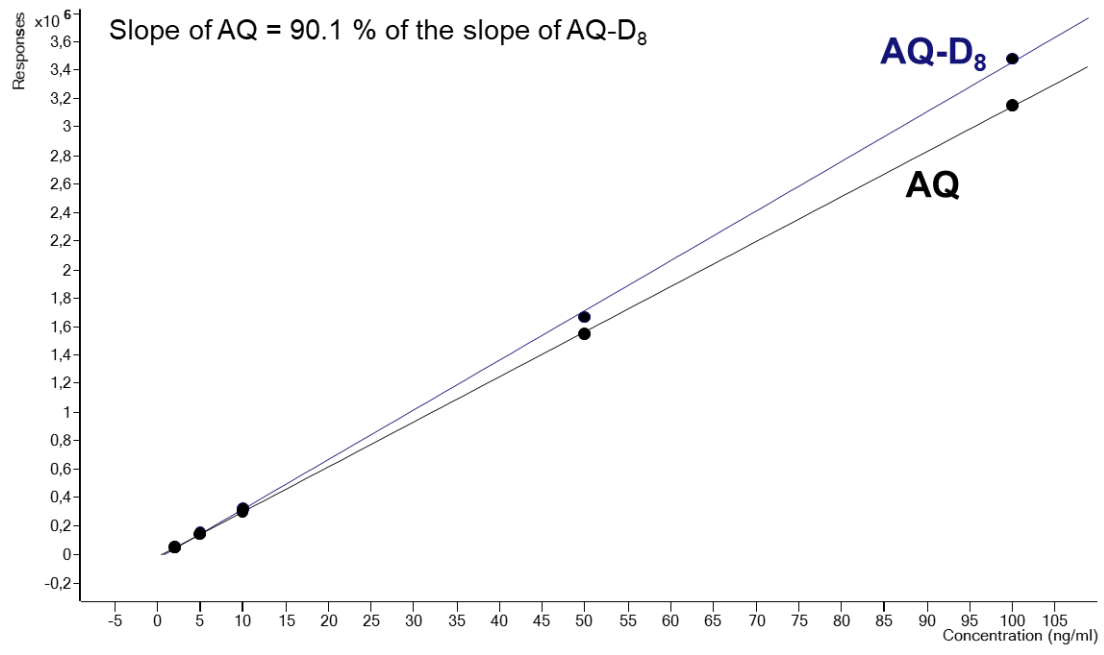


Figure S2. Comparison of AQ and AQ-D₈ calibration curves in tea M24 extract.