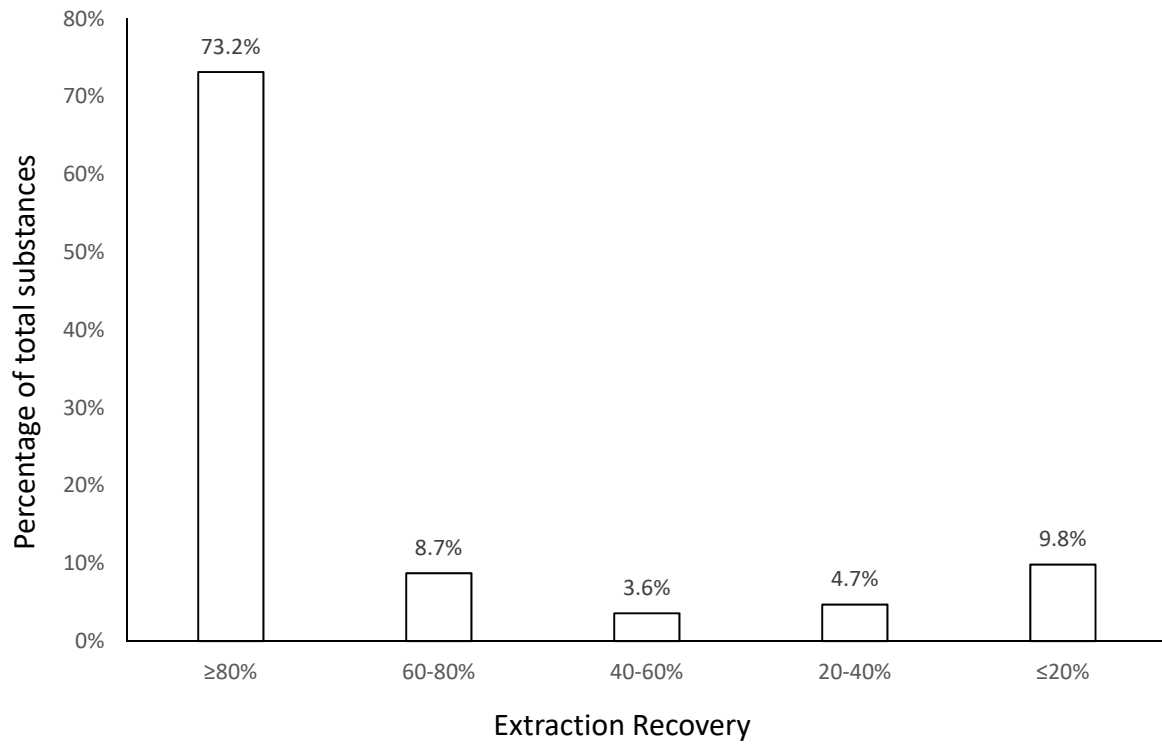
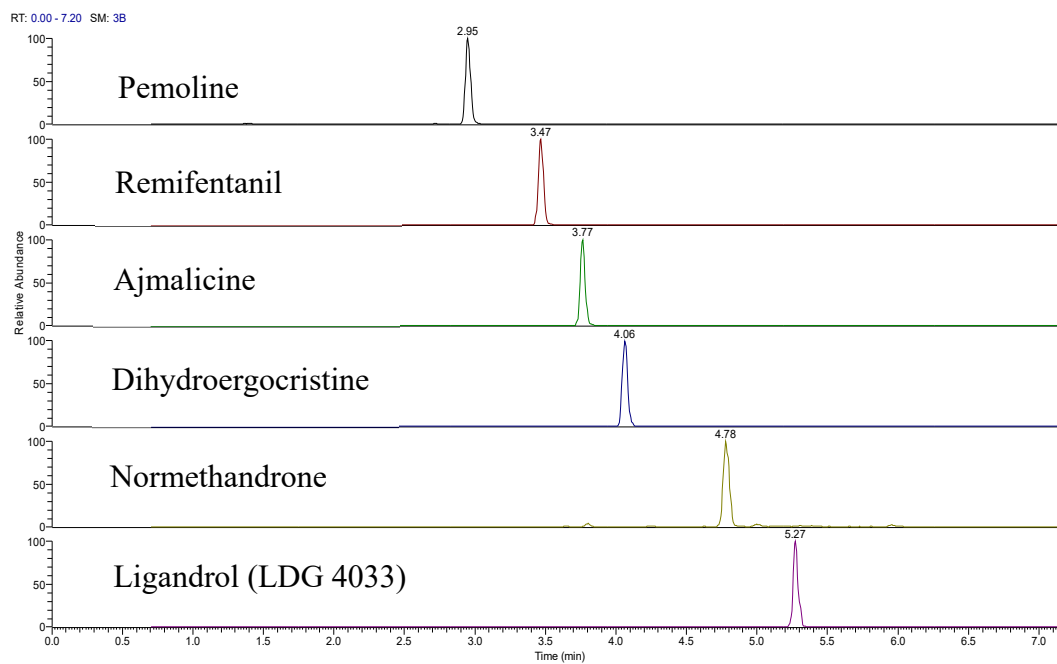


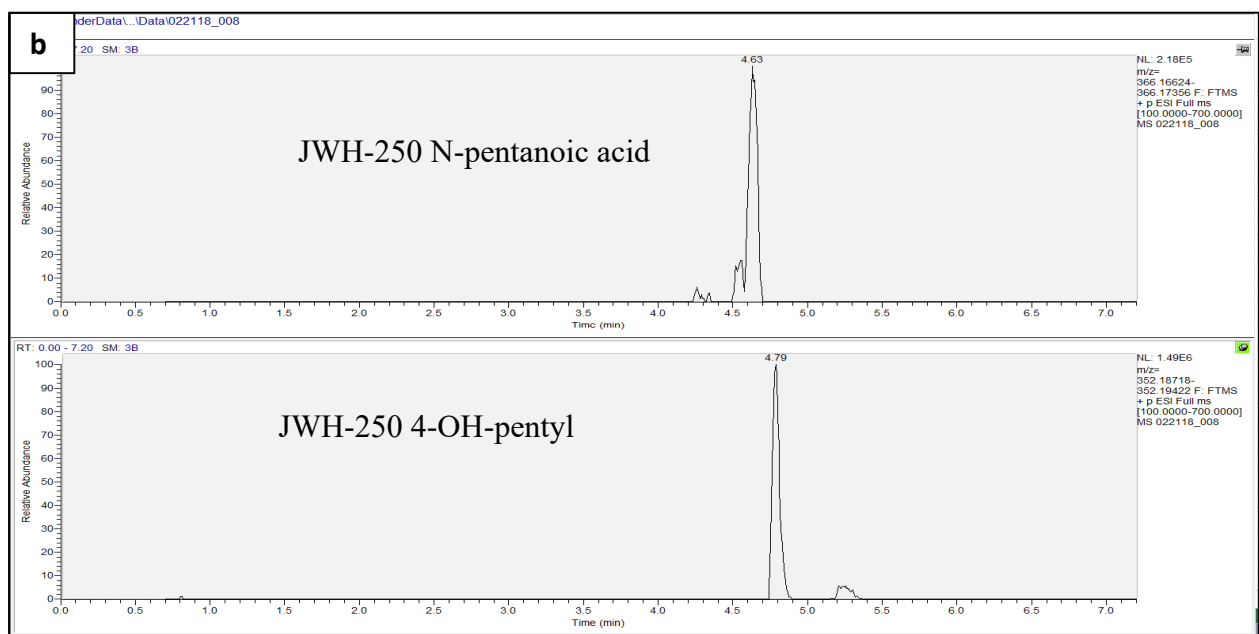
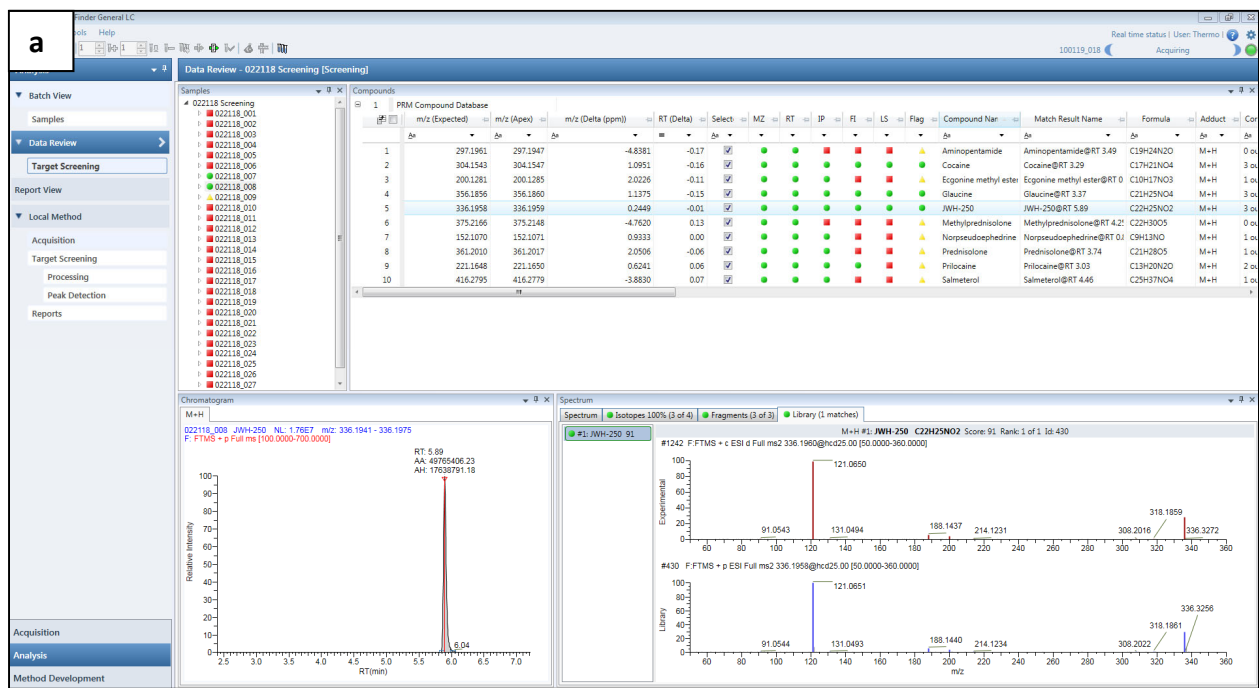
Supplemental Figure 1. Percentage of substances with different Minimum Screening Sensitivities (MSS)



Supplemental Figure 2. Percentage of total substances vs. extraction recovery



Supplemental Figure 3. Extracted ion chromatograms of six non-targeted substances spiked into blank plasma at 1.0 ng/mL.



Supplemental Figure 4. Detection of the metabolites of JWH-250, i.e. JWH-250 N-pentanoic acid and JWH-250 4-OH-pentyl, in a post-race plasma sample using retrospective analysis of the HRMS data. a). JWH-250 was flagged as a suspected finding in a post-race sample by targeted screening; b). using retrospective analysis, the extracted ion chromatograms of JWH-250 N-pentanoic acid and JWH-250 4-OH-pentyl were detected in the sample.