

Supporting Information

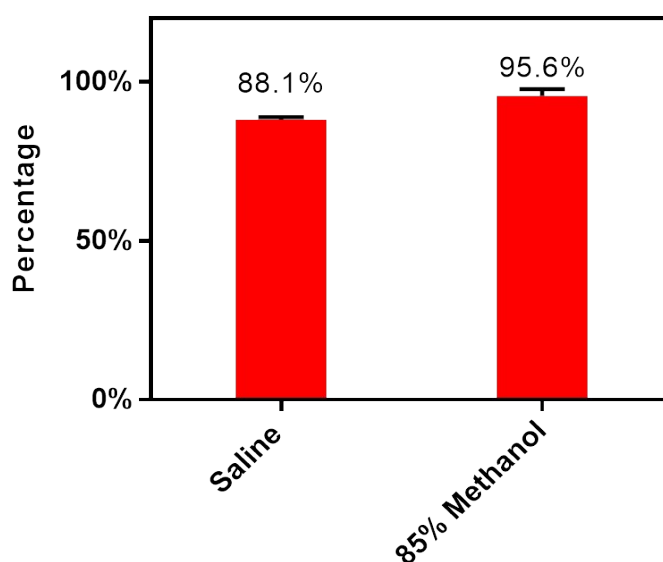
Attenuated salmonella typhimurium mediated tumour targeting imaging based on peptides

Saisai Xiong¹, Zhongyuan Qi¹, Jing Ni¹, Jing Zhong¹, Lijuan Cao^{2*}, Kai Yang^{1*}

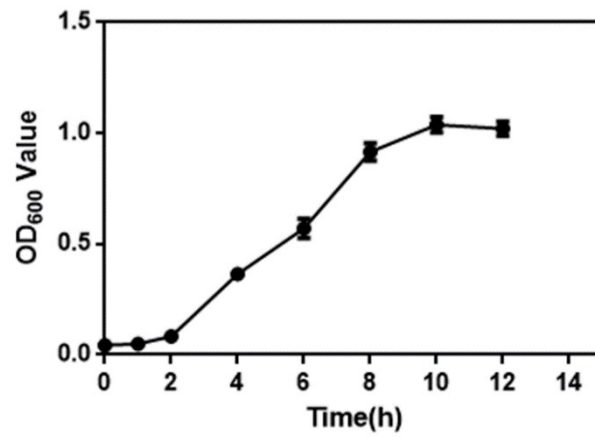
1. State Key Laboratory of Radiation Medicine and Protection, School of Radiation Medicine and Protection and Interdisciplinary Sciences (RAD-X), Collaborative Innovation Center of Radiation Medicine of Jiangsu Higher Education Institutions, Soochow University, Suzhou, Jiangsu 215123, China

2. Jiangsu Institute of Hematology, Key laboratory of Thrombosis and Hemostasis of Ministry of Health, First Affiliated Hospital of Soochow University, Suzhou, Jiangsu 215123, China.

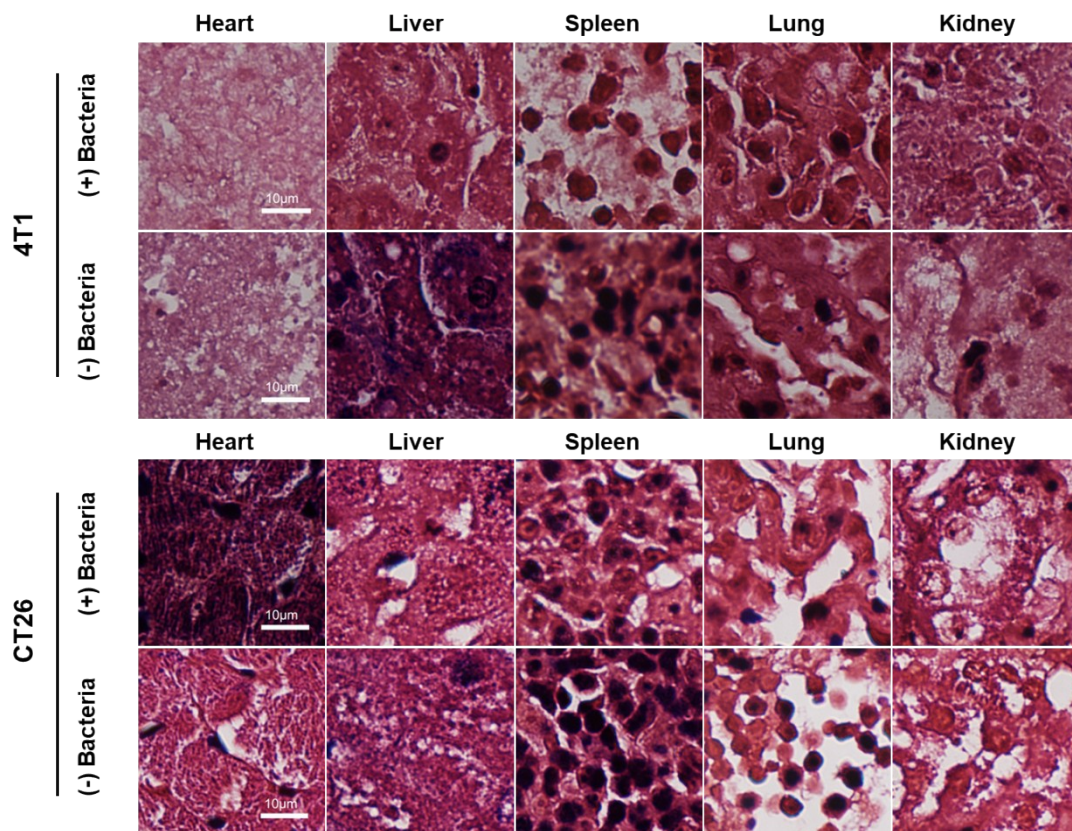
Corresponding authors email: kyang@suda.edu.cn, xxcaolj@163.com



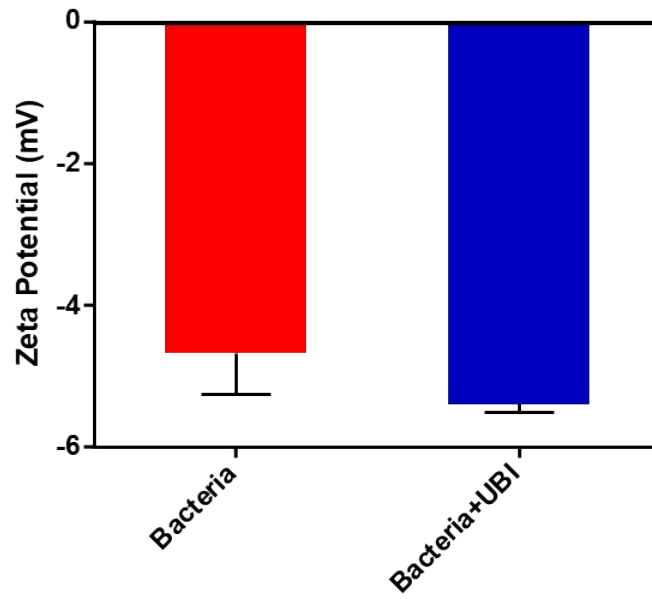
Supporting information Figure S1: The radiochemical purity of ¹²⁵I labeled UBI in saline and 85% methanol solution, respectively.



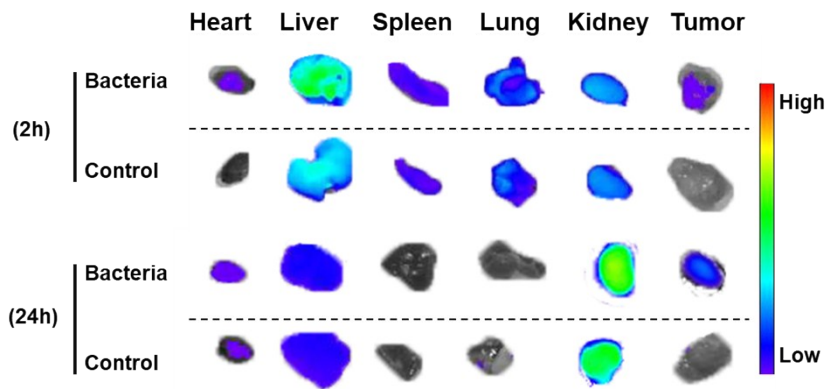
Supporting information Figure S2: The growth curve of salmonella typhimurium in liquid medium in a shaking incubator (37°C, 250 rpm) for overnight.



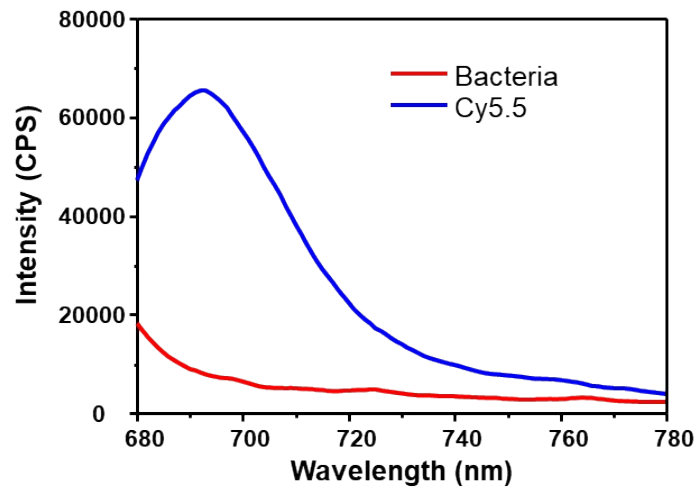
Supporting information Figure S3: Microscopic images of Gram-stained organs collected from 4T1 or CT26-bearing mice at 3 days post injection of salmonella typhimurium.



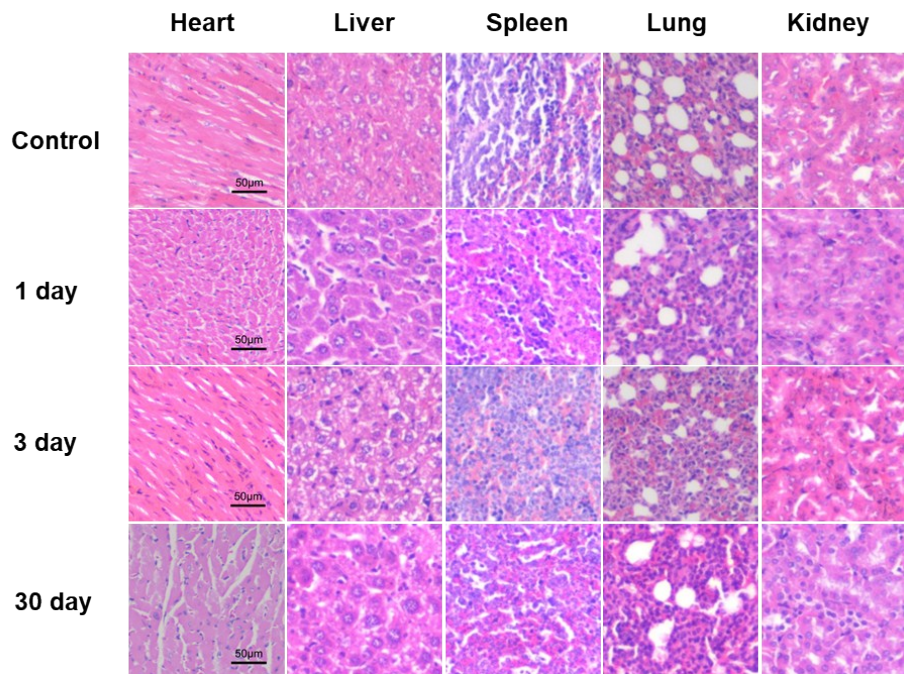
Supporting information Figure S4: The zeta potential of salmonella typhimurium with or without UBI incubation.



Supporting information Figure S5: Ex vivo fluorescent imaging of major organs harvested from 4T1-bearing mice at different time points post injection of Cy5.5-UBI.



Supporting information Figure S6: The spectra of the salmonella typhimurium solvent and Cy5.5 solutions.



Supporting information Figure S7: The images of H&E stained major organs collected from 4T1 bearing mice at different time points post injection of salmonella typhimurium.